



General Catalogue



Loud ProfessionalTM

Sound never ends



TABLE OF CONTENTS

About Us 06 - 07

Formula Series

Formula F205 08 - 09
Formula F210 10 - 11
Formula F212 12 - 13
Formula F215 14 - 15

Formula Subwoofer Series

Formula Sub F221 16 - 17

VH e-motion Series

VH MH210H 18 - 16
VH Bass215H 19 - 16
VH F12H 20 - 21

VH Full Range Series

VH F15EV 22 - 23
VH F15 24 - 25
VH F12 26 - 27

VH Layer Series

VH Layer112H 28 - 29
VH Layer EMD 30 - 31
VH Layer 112H+EMD 32 - 33
VH Layer212H 34 - 35

Table of Contents

Table of Contents ●

● About Us

● Formula Series

● Formula Sub Series

● VH e-motion Series

● VH Full Range Series

● VH Layer Series

● VH Monitor Series

● VH Subwoofer Series

● VH Micro Series

● Smart Series

● Focus Series

● MicrHome Series

● Gamma Series

● Nucleo Series

● Quadra Series

● AirStudio Series

● PowerAck Series

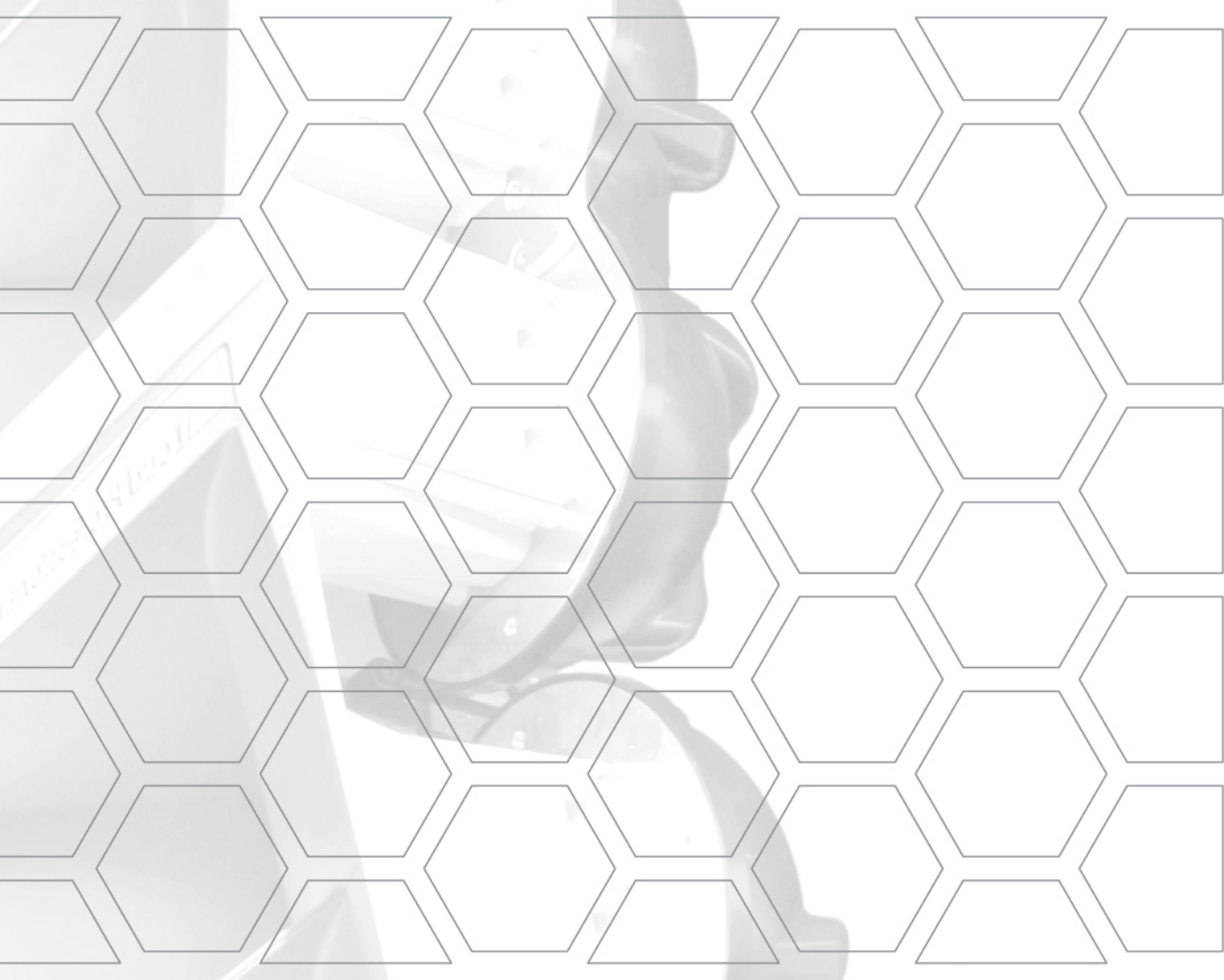


TABLE OF CONTENTS

VH Monitor Series 68 - 69

VH SM12H	36 - 37
VH SM15	38 - 39
VH SM212	40 - 41

VH Subwoofer Series 68 - 69

VH Sub118R	42 - 43
VH Sub218R	44 - 45
VH Infra218R	46
VH Sub218H	47
VH Sub121H	48 - 49

VH Micro Series 68 - 69

VH Micro Full-Range	50 - 51
VH Micro Sub112DR	52 - 53

Smart Series 68 - 69

Smart1.0	54 - 55
Smart1.2	56 - 57
Smart1.5	58 - 59
Smart Sub2.5R	60 - 61
Smart Sub2.8R	62 - 63
Smart Sub1.8H	64 - 65

Focus Series 68 - 69

FocusEight	66 - 67
------------	---------

Table of Contents

Table of Contents	●
About Us	●
Formula Series	●
Formula Sub Series	●
VH e-motion Series	●
VH Full Range Series	●
VH Layer Series	●
VH Monitor Series	●
VH Subwoofer Series	●
VH Micro Series	●
Smart Series	●
Focus Series	●
MicrHome Series	●
Gamma Series	●
Nucleo Series	●
Quadra Series	●
AirStudio Series	●
PowerRack Series	●



TABLE OF CONTENTS

MicrHome Series 68 - 75

MicrHome 68 - 69

MicrHome Mini 70 - 71

MicrHome Nano 72 - 73

MicrHome Sub 74 - 75

Gamma Series 76 - 89

Gamma5 76 - 77

Gamma6 78 - 79

Gamma8 80 - 81

Gamma10 82 - 83

Gamma12 84 - 85

Gamma15 86 - 87

GammaS8 88 - 89

Nucleo Series 90 - 93

Nucleo 90 - 91

NucleoS 92 - 93

Quadra Series 94 - 103

Quadra2 94 - 95

Quadra4 96 - 97

Quadra5 98 - 99

Quadra6 100 - 101

QuadraS - HP 102 - 103

AirStudio Series 104 - 105

AirFive 104 - 105

PowerRack Series 106 - 107

PowerRack V.1 106 - 107

PowerRack V.1i 108 - 109

Coordinates 110

Table of Contents

Table of Contents

About Us

Formula Series

Formula Sub Series

VH e-motion Series

VH Full Range Series

VH Layer Series

VH Monitor Series

VH Subwoofer Series

VH Micro Series

Smart Series

Focus Series

MicrHome Series

Gamma Series

Nucleo Series

Quadra Series

AirStudio Series

PowerRack Series

Our origins

Loud Professional manufactures professional sound reinforcement. The project was born in Italy in the early 90's and initially focused almost exclusively in research and experimentation, thanks to the strong motivation and passion of Loud Professional founder Valerio Cherubini (CEO & Founder).

Bringing expertise & Know-How On the road

Before entering the professional audio market, Loud Professional staff and products underwent a long period of direct test "on the road". This trial period allowed us to gain a wide expertise, giving us the needed experience to begin our professional journey.

Brand Identity

In the 90's Loud Professional experience a profound evolution culminated with the refinement of the VH e-motion series, a true flagship of the company.

This evolution led us to define our Sound Philosophy, giving rise to an important Brand Identity process, characterized by the strong spirit of the company. Definitively, our systems were - and still are - extremely recognizable due to the particular and unmistakable speaker design.

The Sound Philosophy

The VH e-motion Series was started with a fundamental ambition that inevitably took its name: to give back to the audience the purest and accurate listening experience wherever they moved within the audience itself. This was the starting point of our sound philosophy: to give all listeners the same identical emotions (e-motion) of listening, the most uniform possible along the two fundamental axis, "V"ertical (forward and backward) and "H"orizontal (from left to right). Hence the name VH e-motion.

With this important system emerged our guide line that we still respect and pursued today: **controlled directivity, high efficiency, wide dynamics range, strong sound impact, powerful bass, smooth and flat frequency response.**

Later on, in order to answer to the professional market and installations requirements, all successive product lines were created: first the VH Layer Series, in which all the aforementioned principles were transposed from Point Source to Line Source, and now our current line "Formula", which to us is nothing but a new starting point where all our above mentioned principles are respected and maximized.

Moreover, our products are suitable to extremely different use conditions.

Our Mission

Our mission is to always offer the maximum comfort to our listeners for the best quality listening experience. So, they never get tired at any sound pressure level, feeling the strongest emotions in a new **"unheard way"** through the most accurate manufacturing of extremely advanced and technologically innovative sound reinforcement.

The Intensive R&D

Being fully aware that R&D activities are the core of our continuous evolution, we have always focused on improving the manufacturing process in which not even the smallest mistake is tolerated. Our advanced prototyping activity, our current highly automated manufacturing process and the use of the latest technologies in production cycles allowed us to achieve a high quality standard ensuring great uniformity through production batches and high product reliability over time.

About Us

The Look Made in Italy

"Italians do it better", we are proud of the 100% Made in Italy manufacturing process, from design to manufacture.

Our product is appreciated in many ways and one is definitely the most recognizable Look.

Characterized by its sober and elegant shape, the design of Loud Professional products is absolutely unmistakable. The chromatic contrast between the black of the cabinet and the pure white of some salient details, such as the waveguides, make it a one-of-a-kind product that integrates harmoniously into the architecture of the installment place. The unmistakable discretion and charm are key-points of our line.

The Technical support

Passion, experience and Know-How, perfect Identity and sound philosophy, are the result of a long evolution and constant research, representing the staples of Loud Professional, but we still have some more important objectives to be achieved. For sure, one of these, is to create the largest audience of constantly updated and well-trained users who share the same sound philosophy, the same way of thinking. In order to do this we have been organizing workshops, courses, seminars and training days for the industry experts.

This training moments are vital for learning our systems' functionality and for adapting it to every use, so to always achieve the best performance, anytime and anywhere. Whenever you are using a Loud Professional system you will always have the same feeling!

The refinement of particular application softwares such as for management & sound prediction allows a more precise and fast use of our systems, specifically with the aim of standardizing the Loud Professional sound universe. The creation of the PoweRack as a solid platform for amplification has allowed us to come full circle. A wide range of dedicated presets and system configurations always allow the perfect use of our speakers with no-compromise, maximizing its performances. The PoweRack is an extremely useful and indispensable device that guarantees the correct power supply of the amplifiers, the correct management of the input signals and the output power, according to the speaker internal wiring system. AC Mains & Signals Patch and PowerPatch are the main responsables for this job and they are both integrated into the different versions of the PoweRack series, mistakes are no accepted!

Marketing Approach & Brand Awareness

We engage in an intense promotional and demonstrative activity that naturally favors the growth and expansion of the brand. Once you've listened to a Loud Professional system, you can't live without it! We regularly participate to the most important trade fairs, that take place globally, to reach out to experts and companies interested in using our system as many as possible, thus creating a Network within the global distribution. The most widespread sharing within the network and the world wide distribution facilitates the integration of our systems.

Loud Studio, our new concept of assistance, allows today's users to be globally assisted according to their every need. Highly qualified staff in each assistance center will be able to answer to the different request for technical assistance and more. Special system configurations, prediction projects, custom-made installations and more can be provided in a short time spread.

We promise that with us you will experience the maximum comfort by living a unique experience. Our main goal is your total satisfaction...

"Listen carefully...Feel better!"

About Us

Formula F205

Two-way Line Array element



Applications

- >> Touring
- >> Theater
- >> Congress
- >> Club
- >> Portable

Formula F205 is the smallest element of the latest Loud Pro Line Array generation system, designed to meet the needs of the most challenging audio market users.

A plenty full-bandwidth low frequency response extended down to 80 Hz and an incredible MF/HF SPL output make F205 extremely suitable as complement in any larger system in front fills or distributed applications.

Its special design enables to achieve the best performances you cannot expect in a really compact and lightweight enclosure, performing in every kind of applications where compromise is not allowed.

F205 combines two generous 5in. Low-Mid woofers and one 1in. exit compression driver, giving a dispersion of 90° and 10° on the Horizontal and Vertical axis.

The two 5in. cone-paper Low-Mid woofer have a really wide operating range from 80 Hz up to 3 kHz, concentrating all the mid frequencies reproduction in only one section and giving a truly smooth and flat response.

Its special phase plug provides a coherent wavefront output without internal diffractions for a clean and undistorted frequency response.

Avoiding undesirable conflicts between the crossover regions in a critical and focal point as the medium range, F205 is focused to obtain an incomparable vocal and instruments intelligibility.

Thanks to the special Low-Mid Band-pass design, the prompt and fast transient response is unique compared to similar system of equal size. Formula Medium-Hi frequency section consists in one particular compression drivers combined to a proprietary double parabolic planar waveguide.

This special long throw device is characterized by a clear and transparent sound, transferring a comfortable flat and smooth response. Great is the coherence of the Horizontal and Vertical dispersion where the Mid-Hi perfect acoustical coupling of individual units is maximized, creating a continuous line source, allowing to achieve really large distances.

Easiest is the system setup thanks to the proprietary box integrated Formula quick rigging solution.

A four units flightcase makes easier transportation and setups. Only one person can manage the maximum configurable array system.

A complete range of rigging accessories make all deployments with ease, such as ceiling-mounted or stacked, offering multiple setup options and various orientations.

F205 can be pole mounted on top of the Micro Sub112DR or the VH Sub118R subwoofers for a plenty full-bandwidth response.

Significant construction criteria, combined with the latest technologies and innovative materials, ensure a great reliability over time.

The F205 cabinet is constructed from Birch-ply and has an impact and weather protected PCP (Polyurea Cabinet Protection) finish.

The system can be as well matched with all the most challenging Loud Professional Formula & VH subwoofers, significantly boosting its LF extension.

Formula Series

Technical Specifications F205

Frequency Range (+/-3dB)	80 Hz - 21 kHz
Nominal Directivity (-6dB) H x V	90° x 10°
Maximum SPL Peak (LMF / MHF)	124 / 139 dB
Components LMF	2 x 5in. Neodymium cone driver
Components MHF	1 x 4in. Neodymium planar wave driver
Nominal Impedance (LMF / MHF)	16 Ω (Internal passive network)
Power Handling (LMF / MHF)	200 / 800 W
Rigging	Formula™ rigging system
Connections	2 x SpeakON™ NL4
Enclosure Construction	18 / 24 mm Birch-ply
Finish	Black Polyurea PCP (Polyurea Cabinet Protection) finish
Protection Grille	Powder coated 2mm Metal Rigid Grille
	Acoustically transparent Foam for discrete appearance
Height Front (mm / in.)	174 / 06.85
Height Back (mm / in.)	247.5 / 9.74
Width Front (mm / in.)	112 / 04.42
Width Back (mm / in.)	468 / 18.42
Depth (mm / in.)	370 / 14.56
Weight (Kg / lb.)	12.5 / 27.55



F205 aspects

Features

- Two-way passive Line Array element <<
- Dual 5in. Band-pass design <<
- Very high performances <<
- Full-bandwidth system 80 Hz - 21 kHz <<
- Pole mounting kit <<
- Floor & Sub Stacking possibility <<
- Formula fast rigging solution <<
- Black PCP (Polyurea Cabinet Protection) finish <<
- Protection Bag <<
- Flightcase (4 units) <<

Formula Series

Formula F210

Four-way Line Array element



Applications

- >> Touring
- >> Theater
- >> Congress
- >> Club

Formula F210 is the latest Loud Pro Line Array generation system, designed to meet the needs of the most challenging audio market users. A plenty full-bandwidth low frequency response, extended down to 65 Hz, allows the system to be used without subwoofer units in many applications where additional low frequency extension is not required.

Its special design enables to achieve the best performances you cannot expect in a really compact and lightweight enclosure, performing in every kind of applications where high SPL output, extended and really flat response, uniformity and great off-axis coherence are required. F210 combines two generous long excursion 10in. Low-Mid woofers, two 5in. midranges and two 1in. exit compression drivers, giving a dispersion of 90° and 10° on the Horizontal and Vertical axis.

The two 5in. cone-paper midranges, heart of the system, have a really wide operating range from 350 Hz up to 4 kHz, concentrating all the mid frequencies reproduction in only one section and giving a truly smooth and flat response.

Its special phase plug provides a coherent wavefront output without internal diffractions for a clean and undistorted frequency response. Avoiding undesirable conflicts between the crossover regions in a critical and focal point as the medium range, F210 is focused to obtain the maximum intelligibility.

The accuracy and the precision of the response make instruments and vocal intelligibility incomparable!

Supported in the lower frequencies by a pair of powerful 10in. Low-Mid woofers, the system extends its range down to 65Hz without stress. Thanks to the special Band-pass & Horn loaded designs, the prompt and fast transient response is unique as you've never heard before! A greater impact for a special sonic experience is guaranteed.

Formula Medium-Hi frequency section consists in two particular compression drivers combined to a proprietary double parabolic planar waveguide.

This special long throw device is characterized by a crystal and transparent sound, transferring a comfortable flat and smooth response.

Great is the coherence of the Horizontal and Vertical dispersion where the Mid-Hi perfect acoustical coupling of individual units is maximized, creating a continuous line source.

Easiest is the system setup thanks to the proprietary box integrated Formula quick rigging solution.

A three units dolly makes easier transportation and setups. Only two persons can manage the maximum configurable 24 elements array.

A complete range of rigging accessories make all deployments with ease, such as ceiling-mounted or stacked, offering multiple setup options and various orientations.

Significant construction criteria, combined with the latest technologies and innovative materials, ensure a great reliability.

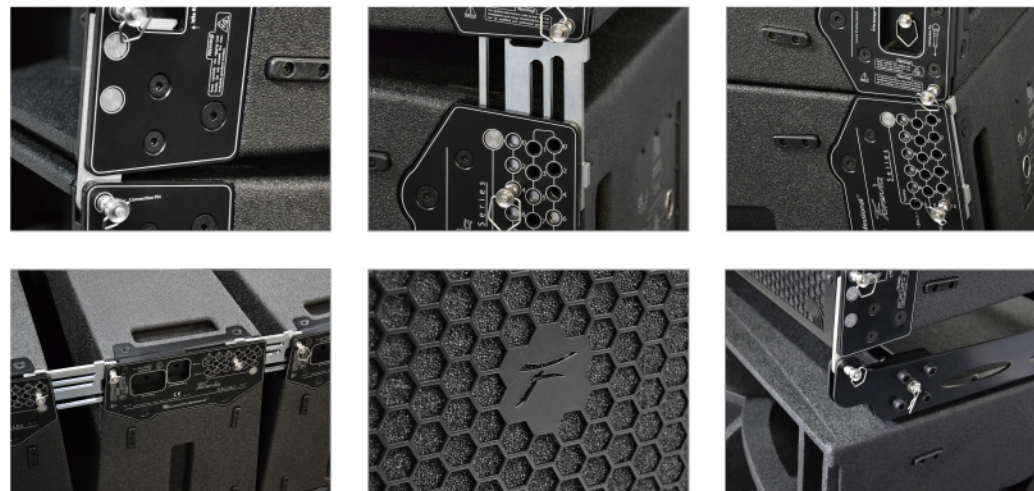
The F210 cabinet is constructed from Birch-ply and has an impact and weather protected PCP (Polyurea Cabinet Protection) finish.

The system can be as well matched with all the most challenging Loud Professional Formula & VH subwoofers, significantly boosting its LF extension.

Formula Series

Technical Specifications F210

Frequency Range (+/-3dB)	65 Hz - 21 kHz
Nominal Directivity (-6dB) H x V	90° x 10°
Maximum SPL Peak (LF / MF / HF)	139 / 137 / 144 dB
Components LF	2 x 10in. Neodymium cone driver
Components MF	2 x 5in. Neodymium con driver
Components HF	2 x 4in. Neodymium planar wave driver
Nominal Impedance LF	2 x 8 Ω
Nominal Impedance MF	6 Ω
Nominal Impedance HF	5.3 Ω
Power Handling (AES / Peak) LF	2 x 600 / 2 x 2.400 W
Power Handling (AES / Peak) MF	160 / 640 W
Power Handling (AES / Peak) HF	240 / 960 W
Rigging	Formula™ rigging system
Connections	2 x SpeakON™ NL8
Enclosure Construction	18 / 24 mm Birch-ply
Finish	Black Polyurea PCP (Polyurea Cabinet Protection) finish
Protection Grille	Powder coated 2mm Metal Rigid Grille
	Acoustically transparent Foam for discrete appearance
Height Front (mm / in.)	328 / 12.91
Height Back (mm / in.)	247.5 / 09.74
Width Front (mm / in.)	92.4 / 36.37
Width Back (mm / in.)	92.4 / 36.37
Depth (mm / in.)	466 / 18.34
Weight (Kg / lb.)	42 / 92



F210 aspects

Features

- Dedicated Four-way Line Array element <<
- Special Band-pass & Horn loaded Design <<
- Very high performances <<
- Full-bandwidth system, 65 Hz - 21 kHz <<
- Floor & Sub Stacking possibility <<
- Formula fast rigging solution <<
- Black PCP (Polyurea Cabinet Protection) finish <<
- Protection Bag <<
- Single Skate & Dolly (3 units) <<

Formula Series

Formula F212

Four-way Line Array element



Applications

- >> Touring
- >> Theater
- >> Congress
- >> Club

Formula F212 is the latest Loud Pro Line Array generation system designed to meet the needs of the most challenging audio market users. A plenty full-bandwidth low frequency response, extended down to 65 Hz, allows the system to be used without subwoofer units in many applications where additional low frequency extension is not required.

Its special all Horn loaded design enables to achieve the best performances you cannot expect in a really compact enclosure, compared with traditional direct radiating systems; this enclosure performs in every kind of applications where high SPL outputs, extended and really flat response, uniformity and great off-axis coherence are essential aspects.

F212 combines two generous 12in. Low-Mid woofers, two 6.5in. midranges and three 1in. exit compression drivers giving a dispersion of 90° and 10° on the Horizontal and Vertical axis.

The two 6.5in. cone-paper midranges, heart of the system, have a really wide operating range from 350 Hz up to 3 kHz, concentrating all the mid frequencies reproduction in only one section and giving a truly smooth and flat response.

Its special phase plug provides a coherent wavefront output without internal diffractions for a clean and undistorted frequency response. Avoiding undesirable conflicts between the crossover regions in a critical and focal point as the medium range, F212 is focused to obtain the maximum intelligibility.

The accuracy and the precision of the reproduction make instruments and vocal intelligibility incomparable!

Supported in the lower frequencies by a pair of powerful 12in. Low-Mid woofers the system extends its range down to 65Hz without stress. Thanks to the special Band-pass & Horn loaded designs the prompt and fast transient response is unique as you've never heard before!

A greater impact for a special sonic experience is guaranteed.

Formula Medium-Hi frequency section consists in three particular compression drivers combined to a proprietary double parabolic planar waveguide.

Great is the coherence of the horizontal and vertical dispersion where the Mid-Hi perfect acoustical coupling of individual units is maximized creating a continuous line source.

Easiest is the system setup thanks to the proprietary box integrated Formula quick rigging solution. A three units dolly makes transportation and building setup easier. Only two persons can manage the maximum configurable 24 elements array.

A complete range of rigging accessories make easier and faster all deployments such as ceiling-mounted or stacked offering multiple set-up options and various orientations.

Significant construction criteria, combined with the latest technologies and innovative materials, ensure a great reliability.

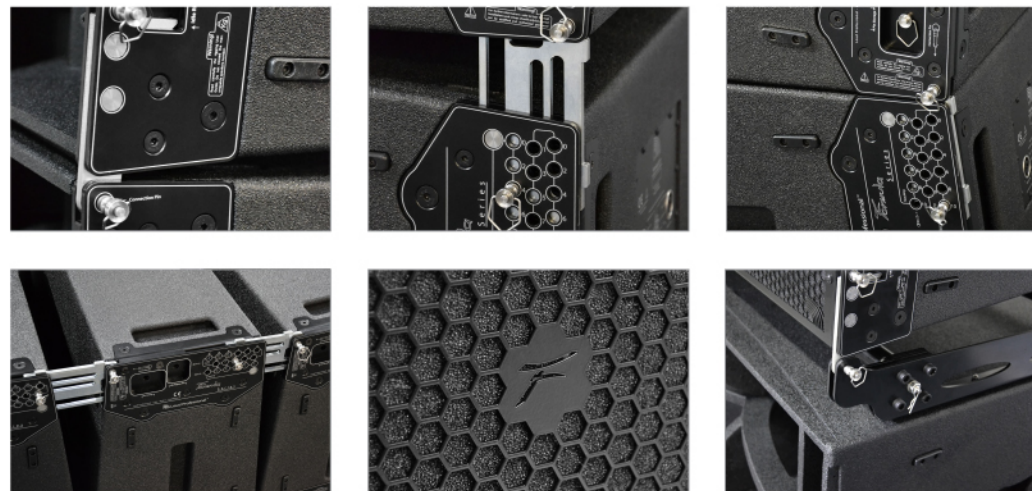
The F212 cabinet is constructed from Birch-ply and has an impact and weather protected PCP (Polyurea Cabinet Protection) finish.

The system can be as well matched with all the most challenging Loud Professional Formula & VH subwoofers, significantly boosting its LF extension.

Formula Series

Technical Specifications F212

Frequency Range (+/-3dB)	65 Hz - 21 kHz
Nominal Directivity (-6dB) H x V	90° x 10°
Maximum SPL Peak (LF / MF / HF)	145 / 141/ 148 dB
Components LF	2 x 12in. Neodymium cone driver
Components MF	2 x 6.5in. Neodymium cone driver
Components HF	3 x 4in. Neodymium planar wave driver
Nominal Impedance LF	2 x 8 Ω
Nominal Impedance MF	8 Ω
Nominal Impedance HF	5.3 Ω
Power Handling (AES / Peak) LF	2 x 1.000 / 2 x 4.000 W
Power Handling (AES / Peak) MF	360 / 1.440 W
Power Handling (AES / Peak) HF	240 / 960 W
Rigging	Formula™ rigging system
Connections	2 x SpeakON™ NL8
Enclosure Construction	18 / 24 mm Birch-ply
Finish	Black Polyurea PCP (Polyurea Cabinet Protection) finish
Protection Grille	Powder coated 2mm Metal Rigid Grille Acoustically transparent Foam for discrete appearance
Height Front (mm / in.)	450 / 17.71
Height Back (mm / in.)	350 / 13.78
Width Front (mm / in.)	1250 / 49.21
Width Back (mm / in.)	1250 / 49.21
Depth (mm / in.)	625 / 24.61
Weight (Kg / lb.)	106 / 233.69



F212 aspects

Features

- Dedicated Four-way Line Array element <<
- Special All Horn loaded Design <<
- Dual Hybrid Low-Mid section Reflex & Horn Loaded <<
- Very high performances <<
- Full-bandwidth system, 65 Hz - 21 kHz <<
- Floor & Sub Stacking possibility <<
- Formula fast rigging solution <<
- Black PCP (Polyurea Cabinet Protection) finish <<
- Protection Bag <<
- Single Skate & Dolly (3 units) <<

Formula Series

Formula F215

Four-way Line Array element



Applications

- >> Touring
- >> Theater
- >> Congress
- >> Club

Formula F215 is the latest Loud Pro Line Array generation system, designed to meet the needs of the most challenging audio market users. A plenty full-bandwidth low frequency response, extended down to 50 Hz, allows the system to be used without subwoofer units in many applications where additional low frequency extension is not required.

Its special Band-pass & Horn loaded designs enables to achieve the best performances you cannot expect in a really compact enclosure, compared with traditional direct radiating systems; this enclosure performs in every kind of applications where high SPL outputs, extended and really flat response, uniformity and great off-axis coherence are essential aspects.

F215 combines two generous long excursion 15in. Low-Mid woofers, two 6.5in. midranges and three 1in. exit compression drivers, giving a dispersion of 90° and 10° on the Horizontal and Vertical axis.

The two 6.5in. cone-paper midranges, heart of the system, have a really wide operating range from 350 Hz up to 3 kHz, concentrating all the mid frequencies reproduction in only one section and giving a truly smooth and flat response.

Its special phase plug provides a coherent wavefront output without internal diffractions for a clean and undistorted frequency response. Avoiding undesirable conflicts between the crossover regions in a critical and focal point as the medium range, F215 is focused to obtain the maximum intelligibility.

The accuracy and the precision of the reproduction make instruments and vocal intelligibility incomparable!

Supported in the lower frequencies by a pair of powerful 15in. Low-Mid woofers, the system extends its range down to 50Hz without stress.

Thanks to the special Band-pass & Horn loaded designs the prompt and fast transient response is unique as you've never heard before!

A greater impact for a special sonic experience is guaranteed.

Formula Medium-Hi frequency section consists in three particular compression drivers combined to a proprietary double parabolic planar waveguide. This special long throw device is characterized by a crystal and transparent sound, transferring a comfortable flat and smooth response. Great is the coherence of the Horizontal and Vertical dispersion where the Mid-Hi perfect acoustical coupling of individual units is maximized, creating a continuous line source.

Easiest is the system setup, thanks to the proprietary box integrated Formula quick rigging solution. A three units dolly makes both transportation and setups easier. Only two persons can manage the maximum configurable 24 elements array.

A complete range of rigging accessories make easier and faster all deployments such as ceiling-mounted or stacked, offering multiple setup options and various orientations.

Significant construction criteria, combined with the latest technologies and innovative materials, ensure a great reliability.

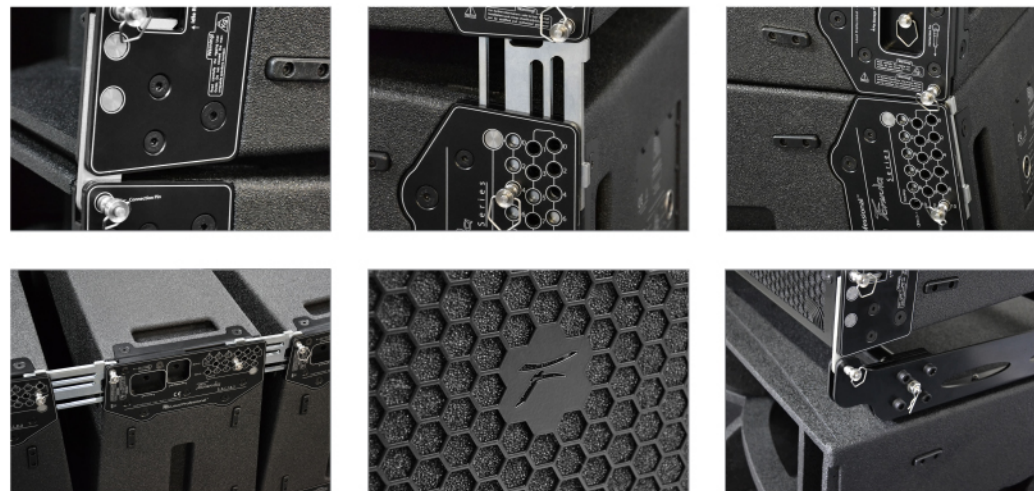
The F215 cabinet is constructed from Birch-ply and has an impact and weather protected PCP (Polyurea Cabinet Protection) finish.

The system can be as well matched with all the most challenging Loud Professional Formula & VH subwoofers, significantly boosting its LF extension.

Formula Series

Technical Specifications F215

Frequency Range (+/-3dB)	50 Hz - 21 kHz
Nominal Directivity (-6dB) H x V	90° x 10°
Maximum SPL Peak (LF / MF / HF)	145 / 141/ 148 dB
Components LF	2 x 15in. Ferrite cone driver
Components MF	2 x 6.5in. Neodymium cone driver
Components HF	3 x 4in. Neodymium planar wave driver
Nominal Impedance LF	2 x 8 Ω
Nominal Impedance MF	8 Ω
Nominal Impedance HF	5.3 Ω
Power Handling (AES / Peak) LF	2 x 1.500 / 2 x 6.000 W
Power Handling (AES / Peak) MF	360 / 1.440 W
Power Handling (AES / Peak) HF	240 / 960 W
Rigging	Formula™ rigging system
Connections	2 x SpeakON™ NL8
Enclosure Construction	18 / 24 mm Birch-ply
Finish	Black Polyurea PCP (Polyurea Cabinet Protection) finish
Protection Grille	Powder coated 2mm Metal Rigid Grille Acoustically transparent Foam for discrete appearance
Height Front (mm / in.)	450 / 17.71
Height Back (mm / in.)	350 / 13.78
Width Front (mm / in.)	1250 / 49.21
Width Back (mm / in.)	1250 / 49.21
Depth (mm / in.)	625 / 24.61
Weight (Kg / lb.)	106 / 233.69



F215 aspects

Features

- Dedicated Four-way Line Array element <<
- Special Band-pass & All Horn loaded Design <<
- Dual Hybrid Low-Mid section Reflex & Horn Loaded <<
- Very high performances <<
- Full-bandwidth system, 50 Hz - 21 kHz <<
- Floor & Sub Stacking possibility <<
- Formula fast rigging solution <<
- Black PCP (Polyurea Cabinet Protection) finish <<
- Protection Bag <<
- Single Skate & Dolly (3 units) <<

Formula Series

Formula Sub F221

Dedicated Infra-Bass enclosure



Push Loop Technology, All in One!

The Loud Pro Push Loop Technology represents a step forward in the lower frequency response compared to the traditional direct radiating vented box.

The double 21in. F221 Infra-Bass unit, based on the Push-pull loading system, combines three different loading techniques: Push-pull, Band-pass and Horn loading system.

This particular compound design provides exceptional low frequency response down to 25 Hz along with the better sound definition, reducing three times (three matched techniques) the total harmonic distortion in a really compact enclosure no larger than a typical single 21in. subwoofer system.

The pair of twins 21in., in a cone to magnet isobaric configuration, acts like a single driver doubling the power handling (3000 + 3000 Watts Program) with a much larger motor, resulting in more control of the woofer linear excursion.

They also provide lower frequency response compared to a single 21in. vented design.

The Band-pass system produces significant performance benefits in terms of efficiency and deepest bass extension that would not be possible in conventional designs of equal size.

The Band-pass also allows a greater control over cone motion and upper low end region, even reducing the total harmonic distortion.

The Horn Loading technique combines the above mentioned effects with the high efficiency, giving a sensitivity of 106.5 dB (2,83V @ 1mt) for an incredible SPL output.

Very impressive low frequency extension and a massive sound impact can be produced from the extremely compact F221 enclosure., "All in one", for a unique subwoofer system as you've never heard before!

The Formula Sub F221 cabinet is constructed from Birch-ply and has an impact and weather protected PCP (Polyurea Cabinet Protection) finish.

It can be as well matched with all the most challenging Full-Range and Line-Array Loud Professional systems significantly boosting their LF extension.

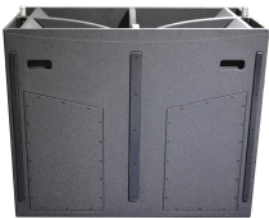
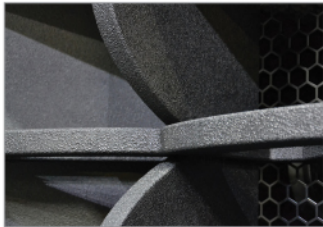
Applications

- >> Touring
- >> Theater
- >> Congress
- >> Club

Formula Subwoofer Series

Technical Specifications F221

Frequency Range (+/-3dB)	25 Hz - 150 Hz
Nominal Directivity (-6dB) H x V	Omnidirectional
Maximum SPL Peak LF	148 dB
Components	2 x 21in. Ferrite cone driver
Nominal Impedance	8 Ω
Power Handling (AES / Peak)	3.000 / 12.000 W
Connections	2 x SpeakON™ NL4
Enclosure Construction	18 / 24 mm Birch-ply
Finish	Black Polyurea PCP (Polyurea Cabinet Protection) finish
Protection Grille	Powder coated 2mm Metal Rigid Grille
	Acoustically transparent Foam for discrete appearance
Height Front (mm / in.)	620 / 24.40
Height Back (mm / in.)	620 / 24.40
Width Front (mm / in.)	1250 / 49.21
Width Back (mm / in.)	1250 / 49.21
Depth (mm / in.)	1018 / 40.07
Weight (Kg / lb.)	125 / 275.57



F221 aspects

Features

- Dedicated Infra-Bass enclosure <<
- Push Loop™ Technology <<
- Push-pull, Band-pass & Horn loaded 2 x 21in. woofer <<
- Powerful sonic impact <<
- High Sensitivity, 106,5dB 1W@1mt <<
- Sensational punch-bass <<
- Extended ultra low reproduction <<
- Interlocking sticks for safety when stacking <<
- Black PCP (Polyurea Cabinet Protection) finish <<
- Protection Bag, Single unit Skate, Dolly (3 units) <<

Formula Subwoofer series

VH MH210H

Long throw Mid-Bass / Mid-Hi enclosure



Applications

- >> Touring
- >> Theater
- >> Congress
- >> Club

The VH MH210H is a fully horn loaded dedicated Mid-Bass / Mid-Hi enclosure. The HF section consists in a special coaxial unit comprising two diaphragms in the same package: 3.5in. + 1.75in. respectively dedicated to the mid & Hi ranges. The result of using small format diaphragms instead of the standard large format, which are typically managed an octave lower, is a decreased distortion and an extremely linear and smooth response never tiring the listening in the most sensitive focal points. A special phase plug provides a coherent planar wavefront output without internal diffractions for a crystal and transparent sound. This particular device is combined with a conical waveguide giving a dispersion of 60° x 40° on the Horizontal and Vertical axis. The LMF section features two generous 10in. neodymium transducers mounted on constant directivity horn delivering a sensitivity of 114 dB, a huge gain compared with traditional direct radiating drivers. The LMF / MHF fully horn loaded coaxial design with no compromise offers a superior sound impact and a greater off-axis coherence. VH Bass215H is the ideal companion boosting its LF extension down to 60 Hz. A dedicated flybar kit and a proprietary fast rigging system allow to build large scale clusters of multiple vertical arrays up to 16 units. An Infra-Bass unit (VH Infra218R) further extends the system response down to 25 Hz. Significant construction criteria, combined with the latest technologies and innovative materials, ensure a great reliability. The system can be also ground stacked creating a massive wavefront output. The VH MH210H cabinet is constructed from Birch-ply and has an impact and weather protected PCP (Polyurea Cabinet Protection) finish.

Technical Specifications

MH210H

Frequency Range (+/-3dB)	220 Hz - 21 kHz
Nominal Directivity (-6dB) H x V	60° x 40° - Conical
Maximum SPL Peak (LMF / MHF)	144 / 143 dB
Components LMF	2 x 10in. Neodymium cone driver
Components MHF	1 x 2in. exit Neodymium coaxial compression driver
Nominal Impedance LMF	4 Ω
Nominal Impedance MHF	16 Ω
Power Handling (AES / Peak) LMF	800 / 3.200 W
Power Handling (AES / Peak) MHF	250 + 80 / 1.000 + 320 W
Rigging	VH e-motion™ rigging system
Connections	2 x SpeakON™ NL8 - 1 x NL4 Sub-Bass out
Enclosure Construction	18 / 24 mm Birch-ply
Finish	Black Polyurea PCP (Polyurea Cabinet Protection) finish
Protection Grille	Powder coated 2mm Metal Rigid Grille
	Acoustically transparent foam for discrete appearance
Height Front (mm / in.)	840 / 33.07
Height Back (mm / in.)	840 / 33.07
Width Front (mm / in.)	815 / 27.55
Width Back (mm / in.)	395 / 15.55
Depth (mm / in.)	830 / 32.67
Weight (Kg / lb.)	80 / 176.36

VH e-motion Series

Frequency Range (+/-3dB)	60 Hz - 220 Hz
Nominal Directivity (-6dB) H x V	Omnidirectional
Maximum SPL Peak (LMF - MHF)	151 dB
Components LF	2 x 15in. Ferrite cone driver
Nominal Impedance LF	4 Ω
Power Handling (AES / Peak) LF	3.000 / 12.000 W
Connections	2 x SpeakON™ NL4
Enclosure Construction	18 / 24 mm Birch-ply
Finish	Black Polyurea PCP (Polyurea Cabinet Protection) finish
Protection Grille	Powder coated 2mm Metal Rigid Grille
	Acoustically transparent foam for discrete appearance
Height Front (mm / in.)	840 / 33.07
Height Back (mm / in.)	840 / 32.08
Width Front (mm / in.)	815 / 27.55
Width Back (mm / in.)	395 / 15.55
Depth (mm / in.)	830 / 32.67
Weight (Kg / lb.)	80 / 176.36

The VH e-motion Series is considered the early 2000's Loud Professional flagship from which came out our fundamental principles that became a true guideline.

Controlled directivity, high efficiency, lower distortions, powerful bass and strong impact, wide dynamic range, flat and smooth frequency response are some of the main features of the VH e-motion Series.

Emotions are something that cannot be explained by a technical process. Emotions are feelings, sensations, perceptions, something magical.

Wherever you move, horizontally and vertically, within the venue the mission is deliver the best quality listening experience never felt before! Giving exactly everyone the same emotions having an extraordinary sound impact never tiring the hearing for a clear, undistorted, well detailed and extended frequency response.

This ambitious concept characterizes the VH e-motion Series from which it takes the name by the same emotions experienced on the Vertical "V" and horizontal "H" axis.

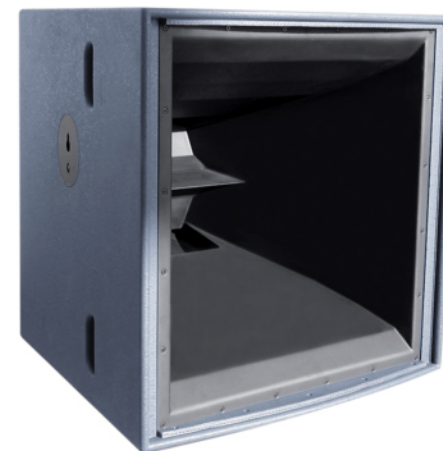
The VH Bass215H is an advanced bass module expressly designed for really long throw applications that can be stacked or flown together in arrays with the VH MH210H extending the lower system response down to 60 Hz creating a massive wavefront output.

It comprises two powerful 15in. LF transducers fully horn loaded delivering a sensational punch-bass reproduction, thanks to its special speaker design. This high efficiency unit delivers extremely low distortion and coherent bass output from 60 Hz up to 220 Hz. The VH Bass215H is fully capable of operating without a Sub/Bass unit in applications where extreme LF performance is not required.

It can be ideally combined with the VH Subwoofer or Formula Sub enclosures such as the VH Sub118/218R, 218H, 121H or F221 boosting its LF extension. Significant construction criteria, combined with the latest technologies and innovative materials, ensure a great reliability.

The VH Bass215H cabinet is constructed from Birch-ply and has an impact and weather protected PCP (Polyurea Cabinet Protection) finish.

VH Bass215H Long throw bass enclosure



Applications

Touring <<
Theater <<
Congress <<
Club <<

VH e-motion Series

VH F12H

Long throw Mid-Bass/Mid-High enclosure



VH F12H is a dedicated fully horn loaded Mid-Hi enclosure housing a single 12in. (320mm) low-mid transducer and a 1.4in. exit compression driver coaxially mounted on the LMF horn, operating from 90 Hz up to 20 kHz.

The HF 1.4in. compression driver is combined with a conical waveguide giving a dispersion of 60° x 40° on the Horizontal and Vertical axis. The LMF section features a single generous 12in. neodymium transducer mounted on constant directivity horn and performing a sensitivity of 110 dB (1 W @ 1 m), a huge gain compared with traditional direct radiating LMF drivers.

Considering its output performance the VH F12H is an incredibly compact and lightweight enclosure.

No compromise LMF/MHF fully horn loaded coaxial design offers the advantage of a superior sound impact, sonically the perception is a large source image, completed with a greater off-axis coherence.

A dedicated flybar kit and a proprietary built in fast rigging system allow to build large scale clusters of multiple arrays up to 16 units each, providing the optimal vertical coverage with two angle steps: 0° and 7,5° as maximum splay.

The VH F12H can also be ground stacked in every applications where suspension is not allowed, creating a massive wavefront output.

Ideal companion of this special device is the VH Bass215H boosting its LF extension down to 60 Hz.

Completing the system configurations the VH F12H is also configurable with an infra-bass unit such as the VH subwoofers or the Formula Sub F221, without using the VH Bass215H.

Significant construction criteria, combined with the latest technologies and innovative materials, ensure a great reliability..

The VH F12H cabinet is constructed from Birch-ply and has an impact and weather protected PCP (Polyurea Cabinet Protection) finish. The system can be as well matched with all the most challenging Loud Professional Formula & VH subwoofers, significantly boosting its LF extension.

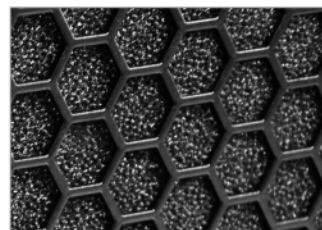
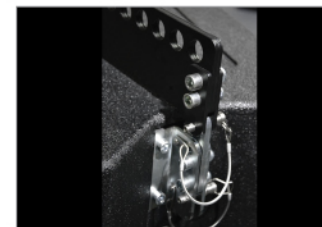
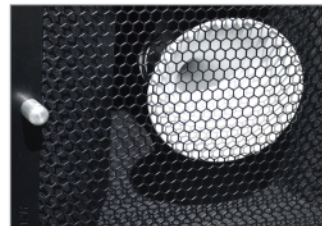
Applications

- >> Touring
- >> Theater
- >> Congress
- >> Club

VH e-motion Series

Technical Specifications F12H

Frequency Range (+/-3dB)	90 Hz - 20 kHz
Nominal Directivity (-6dB) H x V	60° x 40°
Maximum SPL Peak (LMF / MHF)	143 / 136 dB
Components LMF	1 x 12in. Neodymium cone driver
Components MHF	1 x 1.4in. exit Neodymium compression driver
Nominal Impedance LMF	8 Ω
Nominal Impedance MHF	8 Ω
Power Handling (AES / Peak) LMF	450 / 1.800 W
Power Handling (AES / Peak) MHF	110 / 440 W
Rigging	VH e-motion™ rigging system
Connections	2 x SpeakON™ NL8 - 1 x NL4 Sub/Bass out
Enclosure Construction	18 / 24 mm Birch-ply
Finish	Black Polyurea PCP (Polyurea Cabinet Protection) finish
Protection Grille	Powder coated 2mm Metal Rigid Grille
	Acoustically Transparent Foam for discrete appearance
Height Front (mm / in.)	585 / 23.03
Height Back (mm / in.)	585 / 23.03
Width Front (mm / in.)	775 / 30.51
Width Back (mm / in.)	432 / 17.00
Depth (mm / in.)	800 / 31.49
Weight (Kg / lb.)	65 / 143.30
Supported Processing	Armonia Pro Audio Suite



F12H aspects

Features

- Dedicated long throw Mid-Bass/Mid-Hi enclosure <<
- Special All Horn loaded Design <<
- Very high performances <<
- Compact arrayable trapezoid cabinet <<
- Floor & Sub Stacking possibility <<
- VH e-motion fast rigging solution <<
- Interlocking sticks for safety when stacking <<
- Black PCP (Polyurea Cabinet Protection) finish <<
- Protection Bag <<
- Single Skate & Dolly (2 units) <<

VH e-motion Series

VH F15EV

Three-way Full Range system



VH F15EV is a three way large format point source system, incredibly compact for its output performance in a single wide-bandwidth fully horn loaded enclosure, operating from 65 Hz up to 20 kHz.

This special design increases the acoustic output of the low frequency section as well as the MF and HF units.

The system houses 1 x 15in. (380mm) driver with hybrid horn/reflex loading techniques, 2 x 6.5in. (165mm) cone-paper drivers on a midrange horn which covers the frequency range from 350 Hz to 1.6 kHz, and 1 x 2in. (50mm) exit compression driver mounted on 60° H x 40° V constant directivity horn, operating from 1.6 kHz upwards.

Each section features innovative horn-loading techniques and refinements which raise the acoustic performance of the VH F15EV to superior level, in terms of output and smooth 60° Horizontal coverage patterns of the MF and HF waveguides.

The MF and HF horns design offer the advantages of both greater output and superior horizontal directivity pattern control, which doesn't vary significantly the frequency response.

The transducers complement has been engineered for exemplary performance in each section.

VH F15EV is configured in a vertically formatted, trapezoidal Birch-ply cabinet and fitted with a proprietary rigging system to facilitate vertical array configurations.

A dedicated flybar-kit allows the building of large scale clusters made of multiple vertical arrays. Different splayed angles allow the perfect acoustic coupling optimizing the horizontal coverage.

A complete range of rigging accessories make easier and faster all deployments such as ceiling-mounted or stacked offering multiple set-up options and various orientations.

Significant construction criteria, combined with the latest technologies and innovative materials, ensure a great reliability.

The VH F15EV cabinet is constructed from Birch-ply and has an impact and weather protected PCP (Polyurea Cabinet Protection) finish. The system can be as well matched with all the most challenging Loud Professional Formula & VH subwoofers, significantly boosting its LF extension.

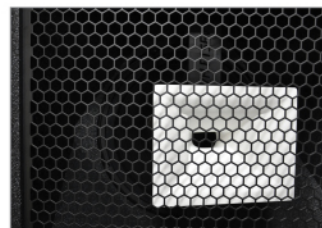
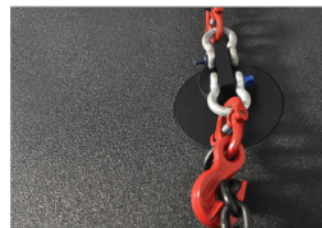
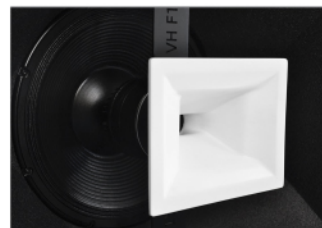
Applications

- >> Touring
- >> Theater
- >> Congress
- >> Club

VH Full Range Series

Technical Specifications F15EV

Frequency Range (+/-3dB)	65 Hz - 20 kHz
Nominal Directivity (-6dB) H x V	60° x 40°
Maximum SPL Peak (LF / MF / HF)	139 / 141 / 136 dB
Components LF	1 x 15in. Neodymium cone driver
Components MF	2 x 6.5in. Neodymium cone driver
Components HF	1 x 2in. exit Neodymium compression Driver
Nominal Impedance LF	8 Ω
Nominal Impedance MF	8 Ω
Nominal Impedance HF	8 Ω
Power Handling (AES / Peak) LF	1500 / 6.000 W
Power Handling (AES / Peak) MF	360 / 1.440 W
Power Handling (AES / Peak) HF	110 / 440 W
Rigging	VH e-motion™ rigging system
Connections	2 x SpeakON™ NL8 - 1 x NL4 Sub-Bass out
Enclosure Construction	18 / 24 mm Birch-ply
Finish	Black Polyurea PCP (Polyurea Cabinet Protection) finish
Protection Grille	Powder coated 2mm Metal Rigid Grille Acoustically transparent Foam for discrete appearance
Height Front (mm / in.)	918 / 36.14
Height Back (mm / in.)	918 / 36.14
Width Front (mm / in.)	661 / 26.02
Width Back (mm / in.)	340 / 13.38
Depth (mm / in.)	639 / 25.15
Weight (Kg / lb.)	67 / 147.70



F15EV aspects

Features

- Three-way Full-Range system <<
- Special All Horn loaded Design <<
- Very high performances <<
- Compact arrayable trapezoid cabinet <<
- Floor & Sub Stacking possibility <<
- VH Full Range fast rigging solution <<
- Compact & Lightweight <<
- Black PCP (Polyurea Cabinet Protection) finish <<
- Protection Bag <<
- Single Skate <<

VH Full Range Series

VH F15

Two-way Full Range system



VH F15 is a two-way point source system optimized for medium throw applications, incredibly compact for its LF output performance in a single wide-bandwidth bass-reflex enclosure.

The system houses 1 x 15in. (380mm) LMF transducer and 1 x 2in. (50mm) exit MHF compression driver mounted on 60° H x 40° V constant directivity horn, operating from 1.5 kHz upwards, intended for a wide range of permanently installed applications.

Thanks to its extended frequency response, from 50 Hz to 20 kHz, the F15 can be used as a stand-alone full range system or supplemented with a Loud Pro subwoofer; it can be stacked on top of a subwoofer system or flown individually using the M10 threaded inserts.

The VH F15 is configured in a vertically formatted, trapezoidal ply-birch cabinet and fitted with eight M10 threaded inserts to facilitate individual horizontal or vertical suspensions.

A dedicated flybar-kit, expressly designed for fixed or permanent installations, allows the cluster building of three units coupled. A connector plate fixed on the top and bottom cabinet sides permits the perfect alignment of the clustered speakers front.

Significant construction criteria, combined with the latest technologies and innovative materials, ensure a great reliability.

The VH F15 cabinet is constructed from Birch-ply and has an impact and weather protected PCP (Polyurea Cabinet Protection) finish.

The system can be as well matched with all the most challenging Loud Professional Formula & VH subwoofers, significantly boosting its LF extension.

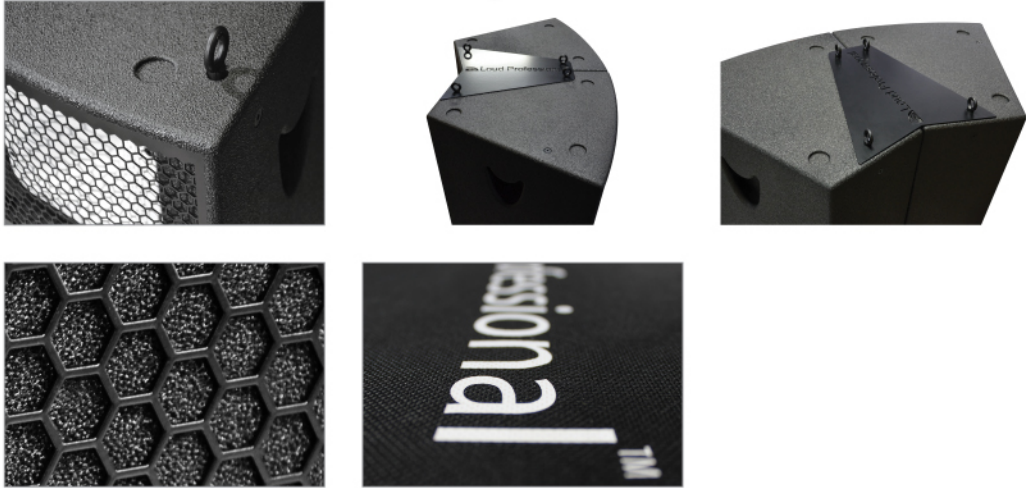
Applications

- >> Touring
- >> Theater
- >> Congress
- >> Club

VH Full Range Series

Technical Specifications F15

Frequency Range (+/-3dB)	50 Hz - 20 kHz
Nominal Directivity (-6dB) H x V	60° x 40° - Rotable
Maximum SPL Peak (LMF / MHF)	136 / 136 dB
Components LMF	1 x 15in. Ferrite cone driver
Components MHF	1 x 2in. exit Neodymium compression driver
Nominal Impedance LMF	8 Ω
Nominal Impedance MHF	8 Ω
Power Handling (AES / Peak) LMF	1.500 / 6.000 W
Power Handling (AES / Peak) MHF	110 / 440 W
Connections	2 x SpeakON™ NL4
Enclosure Construction	18 / 24 mm Birch-ply
Finish	Black Polyurea PCP (Polyurea Cabinet Protection) finish
Protection Grille	Powder coated 2mm Metal Rigid Grille
	Acoustically transparent Foam for discrete appearance
Height Front (mm / in.)	837 / 32.95
Height Back (mm / in.)	837 / 32.95
Width Front (mm / in.)	516 / 20.31
Width Back (mm / in.)	258.5 / 10.17
Depth (mm / in.)	526 / 20.70
Weight (Kg / lb.)	41 / 90.38



F15 aspects

Features

- Two-way Full-Range system <<
- Bi-amplified <<
- Extended Low reproduction down to 50 Hz <<
- High performance 60°H x 40°V coverage <<
- Arrayable compact trapezoid cabinet <<
- Flybar Kit (3 units) <<
- Portable Sound & lightweight <<
- Black PCP (Polyurea Cabinet Protection) finish <<
- Protection Bag <<

VH Full Range Series

VH F12

Two-way Full Range system



VH F12 is a two-way point source system optimized for short to medium throw applications, incredibly compact for its LF output performance in a single wide-bandwidth bass-reflex enclosure.

The system houses 1 x 12in. (320mm) LMF transducer and 1 x 1in. (25mm) exit compression driver mounted on 60° H x 40° V constant directivity horn, operating from 1.2 kHz upwards, intended for a wide range of permanently installed applications.

An internal passive crossover provides the perfect transducers alignment also being more cost effective in terms of used amplifier channels. Thanks to its extended frequency response, from 60 Hz to 20 kHz, the F12 can be used as a stand-alone full range system or supplemented with a Loud Pro subwoofer; it can be stacked on top of a subwoofer system or flown individually using the M8 threaded inserts.

The VH F12 is configured in a vertically formatted, trapezoidal ply-birch cabinet and fitted with eight M8 threaded inserts to facilitate individual horizontal or vertical suspensions.

A dedicated flybar-kit, expressly designed for fixed or permanent installations, allows the cluster building of three units coupled. A connector plate fixed on the top and bottom cabinet sides permits the perfect alignment of the clustered speakers front.

A complete range of rigging accessories make easier and faster other deployments such as wall-mounted, ceiling-mounted or stacked offering multiple set-up options and various orientations.

Significant construction criteria, combined with the latest technologies and innovative materials, ensure a great reliability.

The VH F12 cabinet is constructed from Birch-ply and has an impact and weather protected PCP (Polyurea Cabinet Protection) finish.

The system can be as well matched with all the most challenging Loud Professional Formula & VH subwoofers, significantly boosting its LF extension.

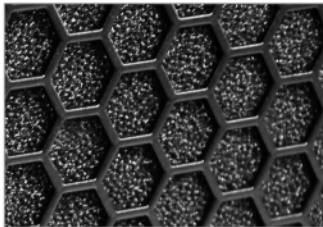
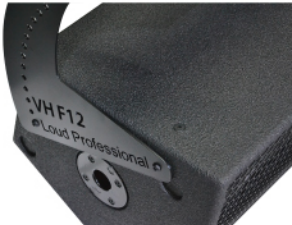
Applications

- >> Touring
- >> Theater
- >> Congress
- >> Club
- >> Portable

VH Full Range Series

Technical Specifications F12

Frequency Range (+/-3dB)	60 Hz - 20 kHz (50 Hz @ -6 dB)
Nominal Directivity (-6dB) H x V	60° x 40° - Rotable
Maximum SPL Peak (LMF - MHF)	127 / 133 dB
Components LMF	1 x 12in. Neodymium cone driver
Components MHF	1 x 1in. exit Neodymium compression driver
Nominal Impedance	8 Ω (Internal passive network)
Power Handling (AES / Peak)	650 / 2.600 W
Connections	2 x SpeakON™ NL4
Enclosure Construction	18 / 24 mm Birch-ply
Finish	Black Polyurea PCP (Polyurea Cabinet Protection) finish
Protection Grille	Powder coated 2mm Metal Rigid Grille Acoustically Transparent Foam for discrete appearance
Height Front (mm / in.)	680 / 26.77
Height Back (mm / in.)	680 / 26.77
Width Front (mm / in.)	430 / 16.92
Width Back (mm / in.)	239 / 9.40
Depth (mm / in.)	380 / 14.96
Weight (Kg / lb.)	24 / 52.91
Supported Processing	Armonia Pro Audio Suite & Armonia Plus



F12 aspects

Features

- Two-way Full Range system <<
- Optimized internal passive network <<
- Extended Low reproduction down to 50 Hz (@ -6 dB) <<
- High performance 60°H x 40°V coverage <<
- Arrayable compact trapezoid cabinet <<
- Flybar Kit (3 units) <<
- Portable Sound & lightweight <<
- Black PCP (Polyurea Cabinet Protection) finish <<
- Protection Bag <<

VH Full Range Series

VH Layer112H

Two / Three-way Line-Array enclosure



VH Layer112H is a configurable Two/Three-way ultra compact Line-Array element. A plenty full-bandwidth low frequency response, extended down to 65 Hz, allows the system to be used without subwoofer units in many applications where additional low frequency extension is not required.

Its all horn loaded design features a high efficiency 12in. woofer and three 1in. special compression drivers combined with a proprietary waveguide, giving a dispersion of 90° x 10° on the Horizontal and Vertical axis.

The HF waveguide special design allows a perfect acoustical coupling of individual unit, virtually creating a continuous line source.

The compression driver comprises a high energy neodymium magnet system and a unique flat annular ring diaphragm that works similar as a wound 101.6 mm long ribbon diaphragm, providing an extremely linear frequency response.

A dedicated phase plug provides a coherent planar wavefront output without internal diffractions for a crystal and transparent sound.

According to use, VH Layer112H can be configured with an additional unit providing an accurate and more detailed mid frequency response (EMD, midrange External Device).

The ABS lightweight (8 Kg) EMD houses two fully horn loaded 6.5in. midranges; an integrated aluminum rigging system enables the fast assembly on both left and right side of the VH Layer112H.

A NL4 output SpeakON connector allows the EMD to be directly wired on the rear connections panel of the main system.

The compact dimensions make this unit extremely modular and suitable for many different array configurations of large dimensions.

The lightweight make also easier and faster all ground stacked configurations.

Significant construction criteria, combined with the latest technologies and innovative materials, ensure a great reliability.

The VH Layer112H cabinet is constructed from Birch-ply and has an impact and weather protected PCP (Polyurea Cabinet Protection) finish.

It can be as well matched with all the most challenging Loud Professional Formula & VH subwoofers, significantly boosting its LF extension.

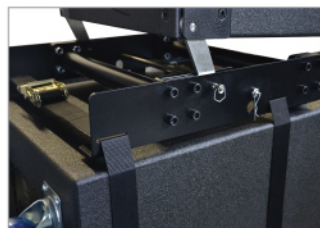
Applications

- >> Touring
- >> Theater
- >> Congress
- >> Club
- >> Portable

VH Layer Series

Technical Specifications Layer112H

Frequency Range (+/-3dB)	65 Hz - 21 kHz
Nominal Directivity (-6dB) H x V	90° x 10°
Maximum SPL Peak (LF / MF / HF)	138 / 141 / 148 dB
Components LF	1 x 12in. Neodymium cone driver
Components MF	2 x 6.5in. Neodymium cone driver (optional)
Components HF	3 x 4in. Neodymium planar wave driver
Nominal Impedance LF	8 Ω
Nominal Impedance MF	8 Ω (optional)
Nominal Impedance HF	5.3 Ω
Power Handling (AES / Peak) LF	650 / 2.600 W
Power Handling (AES / Peak) MF	360 / 1.440 W (optional)
Power Handling (AES / Peak) HF	240 / 960 W
Rigging	VH Layer™ rigging system
Connections	2 x SpeakON™ NL8 - 1 x NL4 Sub-Bass out - 1 x NL4 EMD out
Enclosure Construction	18 / 24 mm Birch-ply
Finish	Black Polyurea PCP (Polyurea Cabinet Protection) finish
Protection Grille	Powder coated 2mm Metal Rigid Grille
	Acoustically transparent Foam for discrete appearance
Height Front (mm / in.)	450 / 17.71
Height Back (mm / in.)	360 / 13.78
Width Front (mm / in.)	545 / 21.45
Width Back (mm / in.)	545 / 21.45
Depth (mm / in.)	510 / 20,07
Weight (Kg / lb.)	45 + 8 / 99.20 + 17.63 (Additional EMD)



Layer112H aspects

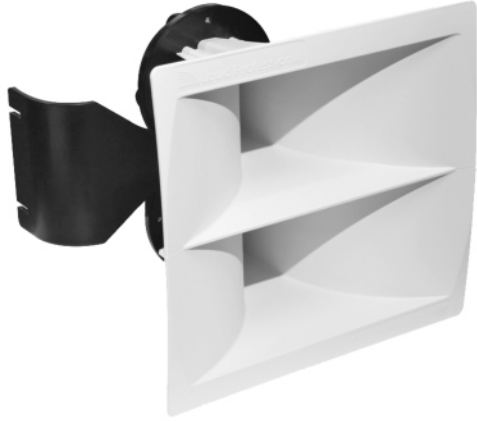
Features

- Two/Three-way Line-Array enclosure <<
- All Horn Loaded Design <<
- Very high performances <<
- Floor & Sub Stacking possibility <<
- Proprietary Integrated fast rigging solution <<
- EMD, External Midrange Device (optional) <<
- Black PCP (Polyurea Cabinet Protection) finish <<
- Professional Flightcase (2 units) <<
- Professional Flightcase EMD (2 units) <<

VH Layer Series

VH LayerEMD

External Midrange Device



EMD, external midrange device, is the ideal companion of the VH Layer112H providing an accurate and more detailed mid frequency response in a focal point.

This special device is focused to obtain the maximum of vocal and instruments intelligibility.

Its all horn loaded design features two high efficiency 6.5in. cone-paper midranges, giving a sensitivity of 110 dB (2,83V @ 1mt), a huge gain compared to traditional direct radiating MF section.

Thanks to the fast and prompt transient response, the impact is incomparable.

EMD ABS lightweight (8 Kg) enclosure houses an integrated aluminum hardware allowing the fast rigging assembly on both, left and right side of the VH Layer112H enclosure.

It can be directly plugged on the VH Layer112H rear connections panel NL4 EMD output section.

The lightweight and compact dimensions make this unit extremely modular and suitable for many different installations even of large formats.

Significant construction criteria, combined with the latest technologies and innovative materials, ensure a great reliability.

Applications

- >> Touring
- >> Theater
- >> Congress
- >> Club
- >> Portable

VH Layer Series

Technical Specifications LayerEMD

Frequency Range (+/-3dB)	350 Hz - 1.5 kHz
Nominal Directivity (-6dB) H x V	90° x 10°
Maximum SPL Peak MF	141 dB
Components MF	2 x 6.5in. Neodymium cone driver
Nominal Impedance	8 Ω
Power Handling (AES / Peak)	360 / 1.440 W
Rigging	VH Layer EMD™ rigging system
Connections	1 x SpeakON™ NL4
Enclosure Construction	ABS
Finish	Black & White polymer
Protection Grille	N.A.
Height Front (mm / in.)	450 / 17.71
Height Back (mm / in.)	450 / 17.71
Width Front (mm / in.)	472 / 18.58
Width Back (mm / in.)	346 / 13.62
Depth (mm / in.)	371 / 14.61
Weight (Kg / lb.)	8 / 17.63



LayerEMD aspects

- Features
- EMD External Midrange Device <<
 - All Horn Loaded Design <<
 - Very high performances <<
 - Proprietary Integrated Aluminum fast rigging solution <<
 - ABS (Polymer) <<
 - Professional Flightcase (2 units) <<
 - Protection Bag (2 units) <<

VH Layer Series

- Table of Contents
- About Us
- Formula Series
- Formula Sub Series
- VH e-motion Series
- VH Full Range Series
- VH Layer Series**
- VH Monitor Series
- VH Subwoofer Series
- VH Micro Series
- Smart Series
- Focus Series
- MicrHome Series
- Gamma Series
- Nucleo Series
- Quadra Series
- AirStudio Series
- PowerRack Series

VH Layer112H+EMD

Two/Three-way Line-Array enclosure



VH Layer112H+EMD is a 3 way ultra compact Line-Array element. A plenty full-bandwidth low frequency response, extended down to 65 Hz, allows the system to be used without subwoofer units in many applications where additional low frequency extension is not required.

Its all horn loaded design features a high efficiency 12in. woofer and three 1in. special compression drivers combined with a proprietary waveguide giving a dispersion of 90° x 10° on the Horizontal and Vertical axis.

The HF waveguide special design allows a perfect acoustical coupling of individual unit, virtually creating a continuous line source.

The compression driver comprises a high energy neodymium magnet system and a unique flat annular ring diaphragm that works similar as a wound 101.6 mm long ribbon diaphragm providing an extremely linear frequency response.

A dedicated phase plug provides a coherent planar wavefront output without internal diffraction for a crystal and transparent sound. The VH Layer112H can be configured, according to use, with an external additional unit providing an accurate and more detailed mid frequency response (EMD, midrange External Device).

The ABF lightweight (8 Kg) EMD houses two fully horn loaded 6.5in. midranges. An integrated aluminum rigging system allows the fast assembly indifferently to the left and right side of the VH Layer112H.

A NL4 output Speakon connector allows the EMD to be directly wired on the rear connections panel of the main system.

The compact dimensions make this unit extremely modular and suitable for many different configurations allowing arrays of large dimensions.

The lightweight make also easier and faster all ground stacked configurations.

Significant construction criteria, combined with the latest technologies and innovative materials, ensure a great reliability. The VH Layer112H cabinet is constructed from Birch-ply and has an impact and weather protected PCP (Polyurea Cabinet Protection) finish.

It can be as well matched with all the most challenging Loud Professional Formula & VH subwoofers, significantly boosting its LF extension.

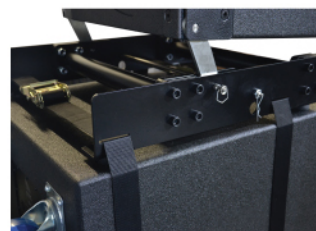
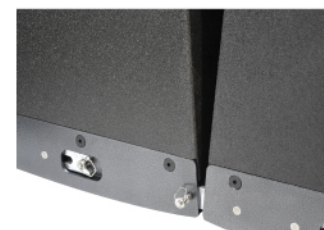
Applications

- >> Touring
- >> Theater
- >> Congress
- >> Club

VH Layer Series

Technical Specifications Layer112H+EMD

Frequency Range (+/-3dB)	65 Hz - 21 kHz
Nominal Directivity (-6dB) H x V	90° x 10°
Maximum SPL Peak (LF / MF / HF)	138 / 141 / 148 dB
Components LF	1 x 12in. Neodymium cone driver
Components MF	2 x 6.5in. Neodymium cone driver (optional)
Components HF	3 x 4in. Neodymium planar wave driver
Nominal Impedance LF	8 Ω
Nominal Impedance MF	8 Ω (optional)
Nominal Impedance HF	5.3 Ω
Power Handling (AES / Peak) LF	650 / 2.600 W
Power Handling (AES / Peak) MF	360 / 1.440 W (optional)
Power Handling (AES / Peak) HF	240 / 960 W
Rigging	VH Layer™ rigging system
Connections	2 x SpeakON™ NL8 - 1 x NL4 Sub-Bass out - 1 x NL4 EMD out
Enclosure Construction	18 / 24 mm Birch-ply
Finish	Black Polyurea PCP (Polyurea Cabinet Protection) finish
Protection Grille	Powder coated 2mm Metal Rigid Grille Acoustically transparent Foam for discrete appearance
Height Front (mm / in.)	450 / 17.71
Height Back (mm / in.)	360 / 13.78
Width Front (mm / in.)	545 / 21.45
Width Back (mm / in.)	545 / 21.45
Depth (mm / in.)	510 / 20.07
Weight (Kg / lb.)	45 + 8 / 99.20 + 17.63 (Additional EMD)



Layer112H+EMD aspects

Features

- Three-way Line Array enclosure <<
- All Horn Loaded Design <<
- Very high performances <<
- Floor & Sub Stacking possibility <<
- Proprietary Integrated VH Layer fast rigging solution <<
- Optional External Midrange Device EMD <<
- Black PCP (Polyurea Cabinet Protection) finish <<
- Professional Flightcase (2 units) <<
- EMD Professional Flightcase (2 units) <<

VH Layer Series

VH Layer212H

Four-way Line-Array enclosure



Applications

- >> Touring
- >> Theater
- >> Congress
- >> Club

VH Layer212H is a 4 way fully horn loaded Line-Array element. A plenty full-bandwidth low frequency response, extended down to 65 Hz, allows the system to be used without subwoofer units in many applications where additional low frequency extension is not required. Its all horn loaded design features two high efficiency 12in. (320mm) low-mid transducers, two 6.5in. (165mm) midranges and three 1in. (25mm) special compression drivers mounted on individual horns and combined with a proprietary waveguide, giving a dispersion of 90° x 10° on the Horizontal and Vertical axis

The result of using small format compression drivers instead of the competitors traditional large format, which are typically managed an octave lower, is a decreased distortion and an extremely linear and smooth response never tiring the ear at its most sensitive focal point. It means that Layer212H delivers an incomparable high frequency response with much lower distortion than traditional large format compression driver devices.

The compression driver comprises a high energy neodymium magnet system and a unique flat annular ring diaphragm that it works similar as a wound 101.6 mm long ribbon diaphragm providing an extremely linear frequency response.

A dedicated phase plug provides a coherent planar wavefront output without internal diffraction for a crystal and transparent sound.

The MF design comprises two 6.5in. horn loaded midranges mounted on 90° H constant directivity horn giving an exceptional horizontal pattern control compared to the traditional direct radiating MF competitor design, for a truly consistent coverage.

Along with the better medium range reproduction and thanks to the special horn loaded design, really high is the efficiency achieved by the MF section.

The LF section houses two high efficiency 12in. neodymium drivers front-loaded by separate hyperbolic horns for maximum efficiency and rear-loaded by a vented box. An extra large reflex port reduces turbulence and air noise extending the LF output to below the natural horn cut-off point.

The hybrid configuration combines the greater sound impact of a bass horn with the low frequency extension of a bass-reflex enclosure. It significantly increases the system efficiency compared to direct radiator low-end designs of competitors.

A dedicated flybar kit allows to build large scale arrays up to 24 elements.

The flybar main frame enables the system to be also configured in ground stacked configurations.

A complete range of accessories such as three units dolly, single unit skate, protection bag and others makes all operations easier and faster. Significant construction criteria, combined with the latest technologies and innovative materials, ensure a great reliability.

The VH Layer212H cabinet is constructed from Birch-ply and has an impact and weather protected PCP (Polyurea Cabinet Protection) finish.

It can be as well matched with all the most challenging Loud Professional Formula & VH subwoofers, significantly boosting its LF extension.

VH Layer Series

Technical Specifications Layer212H

Frequency Range (+/-3dB)	65 Hz - 21 kHz
Nominal Directivity (-6dB) H x V	90° x 10°
Maximum SPL Peak (LF / MF / HF)	145 / 141 / 148 dB
Components LF	2 x 12in. Neodymium cone driver
Components MF	2 x 6.5in. Neodymium cone driver
Components HF	3 x 4in. Neodymium planar wave driver
Nominal Impedance LF	8 + 8 Ω
Nominal Impedance MF	8 Ω
Nominal Impedance HF	5.3 Ω
Power Handling (AES / Peak) LF	2 x 650 / 2 x 2.600 W
Power Handling (AES / Peak) MF	360 / 1.440 W
Power Handling (AES / Peak) HF	240 / 960 W
Rigging	VH Layer™ rigging system
Connections	2 x SpeakON™ NL8
Enclosure Construction	18 / 24 mm Birch-ply
Finish	Black Polyurea PCP (Polyurea Cabinet Protection) finish
Protection Grille	Powder coated 2mm Metal Rigid Grille
	Acoustically transparent Foam for discrete appearance
Height Front (mm / in.)	450 / 17.71
Height Back (mm / in.)	360 / 13.78
Width Front (mm / in.)	1250 / 58.21
Width Back (mm / in.)	1250 / 58.21
Depth (mm / in.)	625 / 24.61
Weight (Kg / lb.)	90 / 198.41



Layer212H aspects

- Features**
- Four-way Line Array enclosure <<
 - All Horn Loaded Design <<
 - Very high performances <<
 - Full-bandwidth system, 65 Hz - 21 kHz <<
 - Floor & Sub Stacking possibility <<
 - Proprietary Integrated VH Layer fast rigging solution <<
 - Black PCP (Polyurea Cabinet Protection) finish <<
 - Protection Bag <<
 - Skate (Single unit) & Dolly (3 units) <<

VH Layer Series

- Table of Contents
- About Us
- Formula Series
- Formula Sub Series
- VH e-motion Series
- VH Full Range Series
- VH Layer Series**
- VH Monitor Series
- VH Subwoofer Series
- VH Micro Series
- Smart Series
- Focus Series
- MicrHome Series
- Gamma Series
- Nucleo Series
- Quadra Series
- AirStudio Series
- PowerRack Series

VH SM12H

Dual Purpose PA/Stage monitor enclosure



Born to be a perfect live performer, VH SM12H is a multipurpose coaxial full range system perfectly suited to all short-medium throw sound reinforcement applications, operating from 65 Hz up to 20 kHz.

The system features a 3in. diaphragm compression driver coaxially mounted on a 12in. low-mid frequency transducer in a really compact and lightweight hybrid enclosure (bass reflex & horn loaded) giving a dispersion of 20° x 90° on the Horizontal and Vertical axis.

Thank to its special design the VH SM12H is able to deliver an incredible sound impact for a fast a prompt transient response, unusual compared to other speakers of equal size. The extremely accurate frequency response makes unique the vocal intelligibility!

Wider is the dispersion on the vertical axis (90° V) while extremely narrow is the horizontal (20° H), in order to avoid any interference in a closer proximity focusing on the artist only and offering an excellent acoustic isolation from other performers.

The compression driver constant directivity horn can be easily rotate obtaining the narrower dispersion on the Vertical axis.

The VH SM12H can be pole-mounted using the box integrated socket.

A complete range of rigging accessories make easier and faster other deployments such as wall-mounted, ceiling-mounted or stacked offering multiple set-up options and various orientations.

The system can also be suspended using three M8 threaded inserts (two on the top panel and one on the rear panel).

Two paralleled SpeakON™ NL4 connectors on the right & rear side panel allow a better connection depending on the use.

The great performances, light weight and compact dimensions make this system incredibly smart & portable just by broadening the applications range.

Significant construction criteria, combined with the latest technologies and innovative materials, ensure a great reliability.

The VH SM12H cabinet is constructed from Birch-ply and has an impact and weather protected PCP (Polyurea Cabinet Protection) finish.

The system can be as well matched with all the most challenging Loud Professional Formula & VH subwoofers, significantly boosting its LF extension.

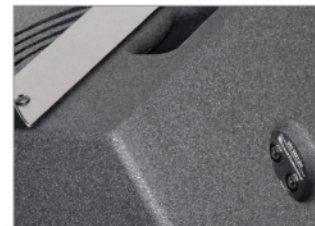
Applications

- >> Touring
- >> Theater
- >> Congress
- >> Club
- >> Portable

VH Monitor Series

Technical Specifications SM12H

Frequency Range (+/-3dB)	65 Hz - 20 kHz
Nominal Directivity (-6dB) H x V	20° x 90° - Rotable
Maximum SPL Peak (LMF / MHF)	136 / 136 dB
Components LMF	1 x 12in. Nodymium driver
Components MHF	1 x 1in. exit Neodymium compression driver
Nominal Impedance LMF	8 Ω
Nominal Impedance MHF	16 Ω
Power Handling (AES / Peak) LMF	650 / 2.600 W
Power Handling (AES / Peak) MHF	110 / 440 W
Connections	2 x SpeakON™ NL4 - 2 x SpeakON™ NL4 Paralleled - Rear side
Enclosure Construction	18 / 24 mm Birch-ply
Finish	Black Polyurea PCP (Polyurea Cabinet Protection) finish
Protection Grille	Powder coated 2mm Metal Rigid Grille
	Acoustically transparent Foam for discrete appearance
Height Front (mm / in.)	490 / 19.23
Height Back (mm / in.)	490 / 19.23
Width Front (mm / in.)	450 / 17.51
Width Back (mm / in.)	450 / 17.51
Depth (mm / in.)	380 / 14.66
Weight (Kg / lb.)	23.5 / 51.80



SM12H aspects

Features

Dual purpose PA/Stage Monitor enclosure <<
 Horn Loaded & Reflex Loaded 1 x 12in. LMF <<
 1.4in. exit compression driver MHF <<
 Powerful sonic impact <<
 Sensitivity 104dB 1W@1mt <<
 Extended low reproduction <<
 Sensational vocal intelligibility <<
 Compact & Lightweight <<
 Neodymium magnets <<
 PCP Polyurea coated paint <<
 Protection Bag <<

VH Monitor Series

VH SM15

Dual Purpose PA/Stage monitor enclosure



Born to be a perfect live performer, VH SM15 is a multipurpose coaxial full range coaxial system perfectly suited to all short-medium throw sound reinforcement applications, operating from 50 Hz up to 20 kHz.

The system houses a 2.5in. diaphragm compression driver coaxially mounted on a 15in. low-mid frequency transducer in a really compact and lightweight bass-reflex enclosure giving a conical dispersion of 60°.

Delivering an accurately defined coverage area on stage it is able to guarantee the best listening experience.

The VH SM15 is focused to ensure the most accurate frequency response to the artists and performers as the result of its incredible clarity and vocal intelligibility.

The amazing gain before feedback, precise pattern control, high SPL output with extremely low distortion and sensational low extension are the most important system features.

The system can be suspended using the height M8 threaded inserts (four on the rear panel and four on the bottom panel).

The left side connections panel features two paralleled SpeakON™ NL8 connectors, two paralleled SpeakON™ NL4 connectors and one dedicated SpeakON™ NL4 Sub-Bass output connector extremely useful when using the system as drum fill in combination with a subwoofer.

The great performances, light weight and compact dimensions make this system incredibly smart & portable just by broadening the applications range.

Significant construction criteria, combined with the latest technologies and innovative materials, ensure a great reliability.

VH SM15 cabinet is constructed from Birch-ply and has an impact and weather protected PCP (Polyurea Cabinet Protection) finish.

The system can be as well matched with all the most challenging Loud Professional Formula & VH subwoofers, significantly boosting its LF extension.

Applications

- >> Touring
- >> Theater
- >> Congress
- >> Club
- >> Portable

VH Monitor Series

Technical Specifications SM15

Frequency Range (+/-3dB)	50 Hz - 20 kHz
Nominal Directivity (-6dB) H x V	60° x 60° - Conical
Maximum SPL Peak (LMF - MHF)	134 / 136 dB
Components LMF	1 x 15in. Nodymium cone driver
Components MHF	1 x 1.4in. exit Neodymium compression driver
Nominal Impedance LMF	8 Ω
Nominal Impedance MHF	8 Ω
Power Handling (AES / Peak) LMF	450 / 1.800 W
Power Handling (AES / Peak) MHF	110 / 440 W
Connections	2 x SpeakON™ NL8 - 2 x SpeakON™ NL4 - 1 x NL4 Sub-Bass out
Enclosure Construction	18 / 24 mm Birch-ply
Finish	Black Polyurea PCP (Polyurea Cabinet Protection) finish
Protection Grille	Powder coated 2mm Metal Rigid Grille
	Acoustically Ttransparent Foam for discrete appearance
Height Front (mm / in.)	406 / 15.98
Height Back (mm / in.)	406 / 15.98
Width Front (mm / in.)	598 / 23.54
Width Back (mm / in.)	598 / 23.54
Depth (mm / in.)	593 / 23.34
Weight (Kg / lb.)	28 / 61.72



SM15 aspects

Features

- Two-way, bi-amp, high performances Stage Monitor <<
- 1 x 15in. + 1 x 1.4in. Coaxial design <<
- Powerful sonic impact <<
- Sensational vocal intelligibility <<
- Extended low reproduction <<
- Compact & lightweight <<
- Neodymium magnets <<
- Very low profile <<
- Black PCP (Polyurea Cabinet Protection) finish <<
- Professional flightcase (2 units) <<

VH Monitor Series

VH SM212

Dual Purpose PA/Stage monitor enclosure



Born to be a perfect live performer, VH SM212 is a multipurpose system perfectly suited to all short-medium throw sound reinforcement applications, operating from 50 Hz up to 20 kHz.

The system houses a 1in. exit compression driver coaxially mounted on a 6.5in. horn loaded midrange, and two generous 12in. low-mid frequency transducers in a really compact and lightweight bass-reflex enclosure giving a conical dispersion of 60°.

Delivering an accurately defined coverage area on stage it is able to guarantee the best listening experience.

The VH SM212 is focused to ensure the most accurate frequency response to the artists and performers as the result of its incredible clarity and vocal intelligibility.

The amazing gain before feedback, precise pattern control, high SPL output with extremely low distortion and sensational low extension are the most important system features.

The system can be suspended using the height M8 threaded inserts (four on the rear panel and four on the bottom panel).

The left side connections panel features two paralleled SpeakON™ NL8 connectors, two paralleled SpeakON™ NL4 connectors and one dedicated SpeakON™ NL4 Sub-Bass output connector extremely useful when using the system as drum fill in combination with a subwoofer.

The great performances, light weight and compact dimensions make this system incredibly smart & portable just by broadening the applications range.

Significant construction criteria, combined with the latest technologies and innovative materials, ensure a great reliability.

The VH SM212 cabinet is constructed from Birch-ply and has an impact and weather protected PCP (Polyurea Cabinet Protection) finish.

The system can be as well matched with all the most challenging Loud Professional Formula & VH subwoofers, significantly boosting its LF extension.

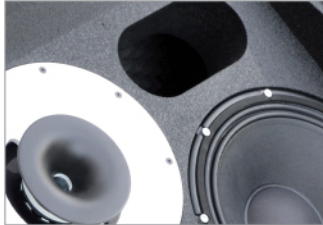
Applications

- >> Touring
- >> Theater
- >> Congress
- >> Club

VH Monitor Series

Technical Specifications SM212

Frequency Range (+/-3dB)	50 Hz - 20 kHz
Nominal Directivity (-6dB) H x V	60° x 60° - Conical
Maximum SPL Peak (LMF / MHF)	138 / 133 dB
Components LMF	2 x 12in. Nodymium cone driver
Components MHF	1 x 6.5in. Neodymium cone driver + 1 x 1in. exit Neodymium compression driver
Nominal Impedance LMF	4 Ω
Nominal Impedance MHF	16 Ω (Internal passive network)
Power Handling (AES / Peak) LMF	1300 / 5.200 W
Power Handling (AES / Peak) MHF	200 / 800 W
Connections	2 x SpeakON™ NL8 - 2 x SpeakON™ NL4 - 1 x NL4 Sub-Bass out
Enclosure Construction	18 / 24 mm Birch-ply
Finish	Black Polyurea PCP (Polyurea Cabinet Protection) finish
Protection Grille	Powder coated 2mm Metal Rigid Grille Acoustically Ttransparent Foam for discrete appearance
Height Front (mm / in.)	406 / 15.98
Height Back (mm / in.)	406 / 15.98
Width Front (mm / in.)	870 / 34.25
Width Back (mm / in.)	870 / 34.25
Depth (mm / in.)	593 / 23.34
Weight (Kg / lb.)	42 / 92.59



SM212 aspects

Features

- Three-way, bi-amp, high performances Stage Monitor <<
- Direct radiating 2 x 12in. , 1 x 6.5in. + 1x1in. coax system <<
- Powerful sonic impact <<
- Sensational vocal intelligibility <<
- Extended low reproduction <<
- Compact & Lightweight <<
- Neodymium magnets <<
- Very low profile <<
- Black PCP (Polyurea Cabinet Protection) finish <<
- Professional flightcase <<

VH Monitor Series

VH Sub118R

Dedicated Sub-Bass enclosure



VH Sub118R is a special lightweight and compact Sub-Bass unit housing a single long excursion 18in. direct radiating transducer mounted in a Bass Reflex tuned enclosure.

Thanks to the Bass Reflex differentially flared design the optimized vented port reduces turbulence and port noise at high levels while also increasing LF efficiency and extending the response down to 35 Hz.

Designed for ground stacked configurations it can be positioned in cardioid subwoofer array with one cabinet physically facing backwards and processed by a dedicated amplifier channel.

It allows to achieve an exceptional benefit controlling the lower frequencies response and significantly reducing the energy radiating towards the rear.

Thanks to the system efficiency the VH Sub118R is capable of delivering high standard SPL output, still maintaining a great linearity in the frequency response.

The special system ability to control the exceptional transducer excursion keep really low the total harmonic distortion level.

Its dimensions make this unit extremely modular for many different configurations allowing arrays of large dimensions, make easier and faster the ground stacked deployments.

Significant construction criteria, combined with the latest technologies and innovative materials, ensure a great reliability.

The VH Sub118R cabinet is constructed from Birch-ply and has an impact and weather protected PCP (Polyurea Cabinet Protection) finish.

It can be as well matched with all the most challenging Full Range and Line Array Loud Professional systems, significantly boosting their LF extension.

Applications

- >> Touring
- >> Theater
- >> Congress
- >> Club

VH Subwoofer Series

Technical Specifications Sub118R

Frequency Range (+/-3dB)	35 Hz - 150 Hz
Nominal Directivity (-6dB) H x V	Omnidirectional or cardioid (paired)
Maximum SPL Peak LF	138 dB
Components	1 x 18in. Ferrite cone driver
Nominal Impedance	8 Ω
Power Handling (AES / Peak)	1.500 / 6.000 W
Connections	2 x SpeakON™ NL4
Enclosure Construction	18 / 24 mm Birch-ply
Finish	Black Polyurea PCP (Polyurea Cabinet Protection) finish
Protection Grille	Powder coated 2mm Metal Rigid Grille
	Acoustically transparent Foam for discrete appearance
Height Front (mm / in.)	575 / 22.63
Height Back (mm / in.)	575 / 22.63
Width Front (mm / in.)	585 / 23.03
Width Back (mm / in.)	585 / 23.03
Depth (mm / in.)	735 / 28.93
Weight (Kg / lb.)	50 / 110.23



Sub118R aspects



Features

- Dedicated Sub/bass enclosure <<
- Fully Horn Loaded long excursion 2 x 18in. <<
- Maximum low frequency output & sensitivity <<
- Powerful sonic impact <<
- Sensational Punch-bass <<
- Extended low reproduction <<
- Interlocking sticks for safety when stacking <<
- Black PCP (Polyurea Cabinet Protection) finish <<
- Protection Bag <<

VH Subwoofer Series

Table of Contents	●
About Us	●
Formula Series	●
Formula Sub Series	●
VH e-motion Series	●
VH Full Range Series	●
VH Layer Series	●
VH Monitor Series	●
VH Subwoofer Series	●
VH Micro Series	●
Smart Series	●
Focus Series	●
MicrHome Series	●
Gamma Series	●
Nucleo Series	●
Quadra Series	●
AirStudio Series	●
PowerRack Series	●

VH Sub218R

Dedicated Sub-Bass enclosure



VH Sub218R is a special Sub-Bass unit housing two long excursion 18in. direct radiating transducers mounted in a two separated bass-reflex tuned enclosures.

It consists of two coupled VH Sub118R with one physically facing up in the bottom side.

This particular "V-shape" design allows to obtain a larger unique reflex port exactly in the cabinet middle, maximizing the system efficiency in the lower frequency response.

The reflex port center alignment increases more the system performances due to its exponential front loading path.

Coupling several units in a large array the result becomes more significant.

The optimized vented port reduces turbulence and port noise at high levels while also increasing LF efficiency, extending the response down to 32 Hz.

Designed for ground stacked configurations it can be positioned in a cardioid subwoofer array with one cabinet physically facing backwards and processed by a dedicated amplifier channel.

It allows to achieves an exceptional benefit controlling the lower frequencies response and significantly reducing the energy radiating towards to the rear.

Thanks to the system efficiency the VH Sub218R is capable of delivering high standard SPL output still maintaining a great linearity in the frequency response.

The special system ability to control the exceptional transducer excursion keep really low the total harmonic distortion level.

Compact dimensions make this unit extremely modular for many different configurations allowing arrays of large dimensions.

The lightweight make easier and faster the ground stacked configurations.

Significant construction criteria, combined with the latest technologies and the innovative materials, ensure a great reliability.

The VH Sub218R cabinet is constructed Birch-ply and has an impact and weather protected PCP (Polyurea Cabinet Protection) finish.

It can be as well matched with all the most challenging Full Range and Line Array Loud Professional systems, significantly boosting their LF extension.

Applications

- >> Touring
- >> Theater
- >> Congress
- >> Club

VH Subwoofer Series

Technical Specifications Sub218R

Frequency Range (+/-3dB)	32 Hz - 150 Hz
Nominal Directivity (-6dB) H x V	Omnidirectional or cardioid (paired)
Maximum SPL Peak LF	144 dB
Components	2 x 18in. Ferrite cone driver
Nominal Impedance	2 x 8 Ω
Power Handling (AES / Peak)	2 x 1.500 / 2 x 6.000 W
Connections	2 x SpeakON™ NL4
Enclosure Construction	18 / 24 mm Birch-ply
Finish	Black Polyurea PCP (Polyurea Cabinet Protection) finish
Protection Grille	Powder coated 2mm Metal Rigid Grille
	Acoustically transparent Foam for discrete appearance
Height Front (mm / in.)	1160 / 45.66
Height Back (mm / in.)	1160 / 45.66
Width Front (mm / in.)	585 / 23.03
Width Back (mm / in.)	585 / 23.03
Depth (mm / in.)	735 / 28.93
Weight (Kg / lb.)	97.5 / 214.95



Sub218R aspects

Features

- Dedicated Sub-Bass enclosure <<
- Dual 18in. "V-Shape" Bass Reflex design <<
- Powerful sonic impact <<
- Sensational Punch-bass <<
- Extended low reproduction <<
- Compact & Lightweight <<
- Interlocking feet for safety when stacking <<
- Black PCP (Polyurea Cabinet Protection) finish <<
- Protection Bag <<

VH Subwoofer Series

VH Infra218R

Dedicated Infra-Bass enclosure



Features

- >> Dedicated Infra-Bass enclosure
- >> Dual 18in. "V-Shape" Bass Reflex design
- >> Very high SPL output
- >> Powerful sonic impact
- >> Sensational Punch-bass
- >> Extended low reproduction
- >> Interlocking sticks for safety when stacking
- >> Black PCP (Polyurea Cabinet Protection) finish
- >> Protection Bag

VH Infra218R is a special Infra-Bass unit housing two long excursion 18in. direct radiating transducers mounted in a two separated bass-reflex tuned enclosures. It has been expressly designed to be combined with the VH e-motion Series (VH MH210H / VH Bass215H / VH F12H) as perfect integration extending the system response down to 25 Hz.

The identical cabinet shape allows perfect ground stacked configurations.

Particular is the "V" shape design that allows to obtain a larger unique reflex port exactly in the cabinet middle, maximizing the system efficiency in the lower frequency response.

The reflex port center alignment more increases the system performances because of its exponential front loading path. The result becomes more significant specially when coupling several units in large sub array configuration. Thanks to the bass reflex differentially flared design the optimized vented port reduces turbulence and port noise at high levels while also increasing LF efficiency and extending the response down to 25Hz. Special

is the speaker design! It allows to achieves an exceptional benefit controlling the lower frequencies response and significantly reducing the energy radiating towards to the rear. Thanks to the system efficiency the VH Infra218R is capable of delivering a high standard SPL output still maintaining a great linearity in the frequency response. The system ability to control the exceptional transducer excursion keep really low the total harmonic distortion level. Significant construction criteria, combined with the latest technologies and the innovative materials, ensure a great reliability. The VH Infra218R cabinet is constructed from Birch-ply and has an impact and weather protected PCP (Polyurea Cabinet Protection) finish.

It can be as well matched with all the most challenging Full Range and Line Array Loud Professional systems, significantly boosting their LF extension.

Technical Specifications

Infra218R

Frequency Range (+/-3dB)	25 Hz - 150 Hz
Nominal Directivity (-6dB) H x V	Omnidirectional
Maximum SPL Peak LF	147 dB
Components	2 x 18in. Ferrite cone driver
Nominal Impedance	2 x 8 Ω
Power Handling (AES / Peak)	2 x 1.500 / 2 x 6.000 W
Connections	2 x SpeakON™ NL4
Enclosure Construction	18 / 24 mm Birch-ply
Finish	Black Polyurea PCP (Polyurea Cabinet Protection) finish
Protection Grille	Powder coated 2mm Metal Rigid Grille
	Acoustically transparent Foam for discrete appearance
Height Front (mm / in.)	1160 / 45.66
Height Back (mm / in.)	1160 / 45.66
Width Front (mm / in.)	815 / 32.08
Width Back (mm / in.)	395 / 15.55
Depth (mm / in.)	830 / 32.67
Weight (Kg / lb.)	108 / 238.10

VH Subwoofer Series

Frequency Range (+/-3dB)	40 Hz - 150 Hz
Nominal Directivity (-6dB) H x V	Omnidirectional
Maximum SPL Peak LF	147 dB
Components	2 x 18in. Ferrite cone driver
Nominal Impedance	2 x 8 Ω
Power Handling (AES / Peak)	2 x 1.500 / 2 x 6.000 W
Connections	2 x SpeakON™ NL4
Enclosure Construction	18 / 24 mm Birch-ply
Finish	Black Polyurea PCP (Polyurea Cabinet Protection) finish
Protection Grille	Powder coated 2mm Metal Rigid Grille
	Acoustically transparent Foam for discrete appearance
Height Front (mm / in.)	1250 / 49.21
Height Back (mm / in.)	1250 / 49.21
Width Front (mm / in.)	960 / 37.69
Width Back (mm / in.)	960 / 37.69
Depth (mm / in.)	1160 / 45.66
Weight (Kg / lb.)	125 / 275.57

the latest technologies and innovative materials, ensure a great reliability. The VH Sub218H cabinet is constructed from Birch-ply and has an impact and weather protected PCP (Polyurea Cabinet Protection) finish.

It can be as well matched with all the most challenging Full Range and Line Array Loud Professional systems, significantly boosting their LF extension.

VH Infra218R & VH Sub218H Applications: Large scale venue >> Touring >> Theater >> Congress >> Club

The VH Sub218H is a particular Sub-Bass unit housing two long excursion 18in. horn loaded transducers mounted on a folded horn without any compromise.

Thanks to its special horn loaded design the system sensitivity is really high giving a maximum SPL output of 152dB (peak @1mt in half space).

Considering the system type, extended is the low frequency reproduction, specially in the lower end region where the unit is able to reproduce frequencies down to 40 Hz with a plenty and sensational sound impact for an unrivalled Bass-punch as you've never heard before!

The result becomes more evident specially when coupling several units in a large array for really long throw applications.

The special system ability to control the transducers linear excursion keep really low the total harmonic distortion levels, still maintaining a great linearity in the lower frequency reproduction for the fastest transient response all over conditions.

Significant construction criteria, combined with

VH Sub218H Dedicated Sub-Bass enclosure



Features

- Dedicated Sub-Bass enclosure <<
- Fully Horn Loaded long excursion 2 x 18in. <<
- Maximum low frequency output & sensitivity <<
- Powerful sonic impact <<
- Sensational Punch-bass <<
- Extended low reproduction <<
- Interlocking sticks for safety when stacking <<
- Black PCP (Polyurea Cabinet Protection) finish <<
- Protection Bag <<

VH Subwoofer Series

VH Sub121H

Dedicated Sub-Bass enclosure



VH Sub121H is a special Sub-Bass unit expressly designed and engineered for the lower frequencies response at the maximum SPL output. The hybrid system configuration (Bass-Reflex & Horn Loading techniques) houses a single 21in. transducer of a 4.5in. voice coil woofer, tuned in a bass reflex enclosure to extend the LF output to below the natural horn cut-off point.

This particular compound system combines the efficiency and impact of the horn loading technique with the low frequency extension of the Bass-Reflex enclosure.

Two extra-large ports allow to further extend the system frequency response down to 35 Hz.

The benefits of this ideal combination ensure a greater sound impact along the most accurate and lower reproduction.

Bass-punch is unrivaled and the incredible high SPL output makes the system extremely effective when providing sound to spacious outdoor environments.

Specially designed for large scale open air venues, smaller compared to VH Sub218H, the 121H can be also used in indoor environments of great dimensions.

The use is strongly recommended whenever a great impact, accuracy and transients fast response become mandatory.

Significant construction criteria, combined with the latest technologies and the innovative materials, ensure a great reliability.

VH Sub121H cabinet is constructed from Birch-ply and has an impact and weather protected PCP (Polyurea Cabinet Protection) finish.

It can be as well matched with all the most challenging Full Range and Line Array Loud Professional systems, significantly boosting their LF extension.

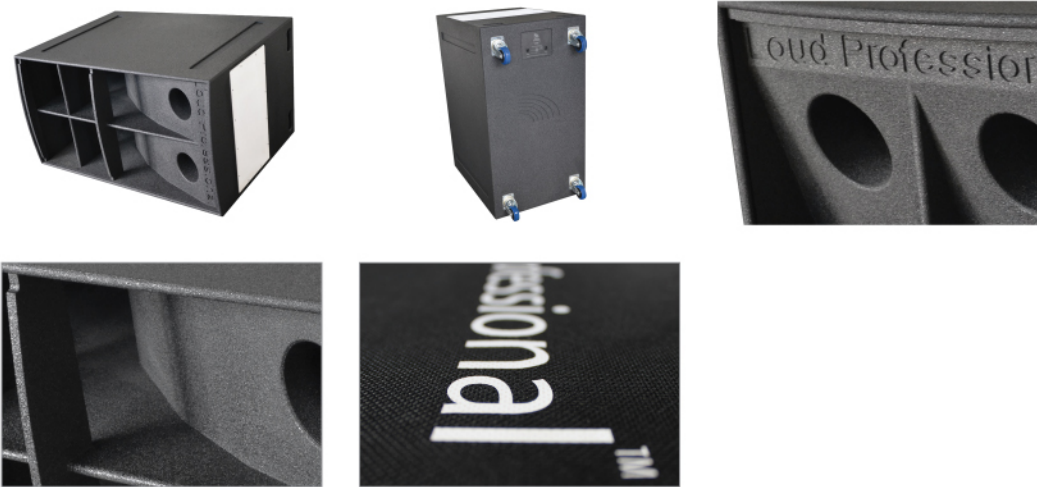
Applications

- >> Touring
- >> Theater
- >> Congress
- >> Club

VH Subwoofer Series

Technical Specifications Sub121H

Frequency Range (+/-3dB)	35 Hz - 150 Hz
Nominal Directivity (-6dB) H x V	Omnidirectional
Maximum SPL Peak LF	145 dB
Components	1 x 21in. Ferrite cone driver
Nominal Impedance	8 Ω
Power Handling (AES / Peak)	2.000 / 8.000 W
Connections	2 x SpeakON™ NL4
Enclosure Construction	18 / 24 mm Birch-ply
Finish	Black Polyurea PCP (Polyurea Cabinet Protection) finish
Protection Grille	Powder coated 2mm Metal Rigid Grille
	Acoustically transparent Foam for discrete appearance
Height Front (mm / in.)	1215 / 47.83
Height Back (mm / in.)	1215 / 47.83
Width Front (mm / in.)	685 / 26.96
Width Back (mm / in.)	685 / 26.96
Depth (mm / in.)	900 / 35.43
Weight (Kg / lb.)	118 / 260



Sub121H aspects

Features

- Dedicated Sub-Bass enclosure <<
- Hybrid 1 x 21in. Folded Horn & Bass Reflex design <<
- Maximum low frequency output & sensitivity <<
- Powerful sonic impact <<
- Sensational Punch-bass <<
- Extended low reproduction <<
- Interlocking sticks for safety when stacking <<
- Black PCP (Polyurea Cabinet Protection) finish <<
- Protection Bag <<

VH Subwoofer Series

- Table of Contents
- About Us
- Formula Series
- Formula Sub Series
- VH e-motion Series
- VH Full Range Series
- VH Layer Series
- VH Monitor Series
- VH Subwoofer Series
- VH Micro Series
- Smart Series
- Focus Series
- MicrHome Series
- Gamma Series
- Nucleo Series
- Quadra Series
- AirStudio Series
- PowerRack Series

VH Micro Full Range

Two-way Passive Full-Range system



Applications

- >> Touring
- >> Theater
- >> Congress
- >> Club
- >> Bar & Restaurant
- >> Living Room
- >> Portable

It is the smallest two-way Loud Professional full range system. Delivering an incredible MF/HF SPL output, the VH Micro FR complements any larger sound system in front fills or distributed applications, operating from 90 Hz up to 20 kHz.

It comprises 1 x 1 in. exit compression driver coaxially mounted on a 6.5 in. LMF transducer compact and lightweight bass reflex enclosure. The particular compression driver ensures superb sonic quality thanks to its special annular diaphragm together with the high energy neodymium magnet.

Extremely linear is the frequency response, extended up to 20 kHz.

The HF section features a 60° conical waveguide. Thanks to its directivity pattern the Micro offers a smooth off-axis response which does not vary significantly.

An internal passive network for the low-mid/mid-high crossover points, ensures the perfect transducers alignment and the most effective use of available amplifier power.

The sound of the VH Micro FR is extremely transparent and well detailed, characterized by an exceptional dynamic range.

Even if the system is driven by the most complex signals it naturally provides the same precision standard, unheard from a similar enclosure of the same category and equal size. Instruments and vocal intelligibility is unrivaled.

Sonically, VH Micro FR system, delivers the Loud Professional signature sound of warmth, clarity and smooth response at high levels with ease.

VH Micro FR is designed for a wide variety of applications including high level professional reinforcement systems.

A complete range of rigging accessories make easier and faster all deployments such as wall-mounted, ceiling-mounted or stacked offering multiple set-up options and various orientations.

VH Micro Sub112DR is the ideal companion as natural LF extension boosting the system response down to 45 Hz for a plenty sound reproduction.

Sensational is the punch-bass as a whole that you cannot expect from a really compact and lightweight enclosures.

Great performances, compact dimensions and lightweight make the VH Micro system incredibly smart & portable broadening the applications range, specially in mobile situations.

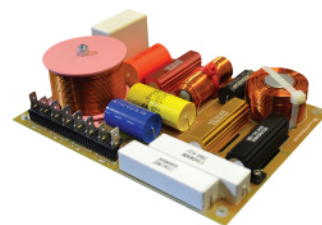
Significant construction criteria, combined with the latest technologies and innovative materials, ensure a great reliability.

VH Micro cabinet is constructed from Birch-ply and has an impact and weather protected PCP (Polyurea Cabinet Protection) finish.

VH Micro Series

Technical Specifications Micro Full Range

Frequency Range (+/-3dB)	90/150 Hz - 20 kHz
Nominal Directivity (-6dB) H x V	60° x 60° - Conical
Maximum SPL Peak (LMF - MHF)	131 dB
Components LMF	1 x 6.5in. Nodymium cone driver
Components MHF	1 x 1in. exit Neodymium compression driver
Nominal Impedance	16 Ω (Internal passive network)
Power Handling (AES / Peak)	200 / 800 W (operating @150Hz - HPF)
Connections	2 x SpeakON™ NL4
Enclosure Construction	18 / 24 mm Birch-ply
Finish	Black Polyurea PCP (Polyurea Cabinet Protection) finish
Protection Grille	N.A.
Height Front (mm / in.)	257 / 10.11
Height Back (mm / in.)	340 / 13.38
Width Front (mm / in.)	225 / 08.85
Width Back (mm / in.)	225 / 08.85
Depth (mm / in.)	195 / 07.67
Weight (Kg / lb.)	8 / 17.63



Micro Full Range aspects

Features

- Ultra compact Two-way, coaxial 6.5in.+1in. <<
- Internal Passive 24dB per oct. <<
- Extended Frequency response 90Hz - 21 kHz +/-4dB <<
- High performance, 102dB sensitivity <<
- 400 W Power Handling Program above 150 Hz <<
- Constant 60° H x 60° V conical coverage <<
- Portable Sound & Lightweight, proprietary bracket <<
- Black PCP (Polyurea Cabinet Protection) finish <<
- Professional Flightcase (8 units) <<

VH Micro Series

VH MicroSub112DR

Ultra compact Sub-Bass enclosure



Micro Sub112DR is a 12in. ultra compact Sub-Bass unit that provides powerful low frequency response. The cabinet houses a long excursion 12in. driver in a Band-pass design. It can be used as stand-alone, stacked or individually flown.

The Low compression ports and optimized enclosure give an accurate bass response that is ideally suited for mobile and specific installation applications.

Based on the Band-pass loading technique the Micro Sub112DR provides an exceptional low frequency response down to 45 Hz (@ -6 dB), along the better defined reproduction, reducing the total harmonic distortion, in a really compact enclosure no larger than a typical direct radiating single 12in. subwoofer system.

The Band-pass technique produces significant performance benefits in terms of efficiency and deepest bass extension that would not be possible in a conventional design of equal size.

It also allows greater control over cone motion and upper low end region even reducing the harmonic distortion compared to a traditional vented box.

The lightweight and compact dimensions make easier and faster the ground stacked configurations.

Significant construction criteria, combined with the latest technologies and innovative materials, ensure a great reliability.

The Micro Sub112DR cabinet is constructed from Birch-ply and has an impact and weather protected PCP (Polyurea Cabinet Protection) finish.

It is the ideal companion of the Micro Full-Range system significantly boosting its LF extension down to 45 Hz.

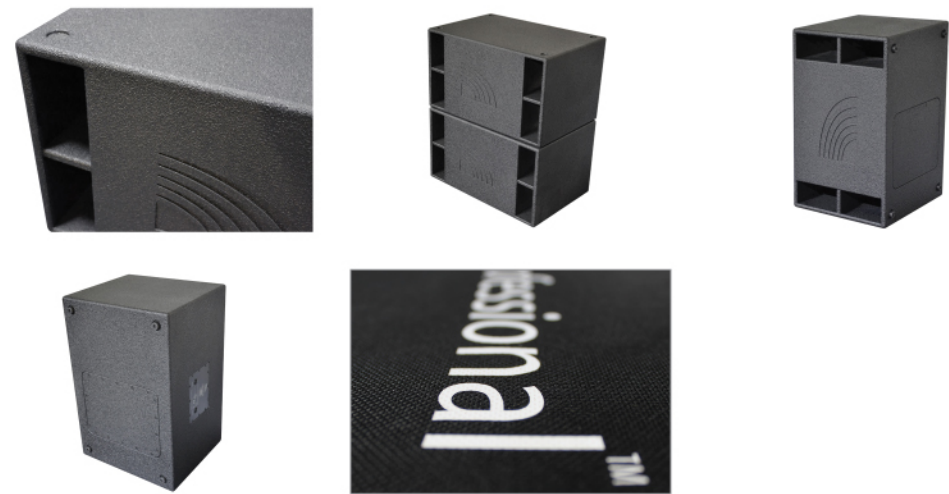
Applications

- >> Touring
- >> Theater
- >> Congress
- >> Club
- >> Bar & Restaurant
- >> Living Room
- >> Portable

VH Micro Series

Technical Specifications Sub112DR

Frequency Range (+/-3dB)	50 Hz - 150 Hz (45 Hz @ -6 dB)
Nominal Directivity (-6dB) H x V	Omnidirectional or cardioid (paired)
Maximum SPL Peak LF	133 dB
Components	1 x 12in. Ferrite cone driver
Nominal Impedance	8 Ω
Power Handling (AES / Peak)	800 / 3.200 W
Connection	2 x SpeakON™ NL4
Enclosure Construction	18 / 24 mm Birch-ply
Finish	Black Polyurea PCP (Polyurea Cabinet Protection) finish
Protection Grille	N.A.
Height Front (mm / in.)	405 / 15.94
Height Back (mm / in.)	405 / 15.94
Width Front (mm / in.)	700 / 27.55
Width Back (mm / in.)	700 / 27.55
Depth (mm / in.)	465 / 18.30
Weight (Kg / lb.)	32.5 / 71.65
Supported Processing	Armonia Pro Audio Suite & Armonia Plus



Micro Sub112DR aspects

Features

- Band-pass concept <<
- 12 in. high performance woofer (800 W AES) <<
- Greater bass extension down to 45 Hz, higher SPL capabilities <<
- Large reflex ports for reduced air noise <<
- Unrivalled tonal accuracy <<
- Ultra compact Sub-Bass enclosure, really low profile <<
- Proprietary wall/ceiling bracket for suspension options <<
- Legendary Loud Professional listening comfort <<
- Protection Bag <<

VH Micro Series

Table of Contents	About Us	Formula Series	Formula Sub Series	VH e-motion Series	VH Full Range Series	VH Layer Series	VH Monitor Series	VH Subwoofer Series	VH Micro Series	Smart Series	Focus Series	MicrHome Series	Gamma Series	Nucleo Series	Quadra Series	AirStudio Series	PowerRack Series
-------------------	----------	----------------	--------------------	--------------------	----------------------	-----------------	-------------------	---------------------	-----------------	--------------	--------------	-----------------	--------------	---------------	---------------	------------------	------------------

Smart1.0

Two-way Powered Full Range system



Applications

- >> Touring
- >> Theater
- >> Congress
- >> Club
- >> Portable

Smart Series is the next generation high performance powered loudspeaker system comprising three full range and three subwoofer models. Expressly designed for all applications where versatility, compact dimensions and lightweight are essential, while keeping great performances and high efficiency with no compromise.

Smart Series meets the needs of touring houses, installations, and the most demanding live sound applications ensuring they can deploy a no-compromise, all-in-one solution featuring the legendary Loud Professional performances and comfort listening.

Smart1.0 is a two way active full range system housing a 1in. (25mm) exit compression driver mounted on a 60° H x 40° V constant directivity horn and a 10in. (250mm) low-mid transducer loaded in bass reflex enclosure. The bass reflex optimized vented ports reduce turbulence and port noise at high levels while also increasing LF efficiency and extending the response down to 65 Hz.

A class D two channels amplifier module provides an exceptional output power, specifically designed for two channels applications where high output voltage level is required, its 2 x 1050 W at 8 Ω is the perfect engine to drive high power two-way full range systems.

Highest grade audio accuracy is guaranteed by fixed frequency switch mode output stage, avoiding any intermodulation artifact, and by the new "Control Plus" board allowing to achieve +6 dB more in terms of Signal-to-Noise Ratio.

The Smart amplifier module is an extremely compact solution: power supply, output stage, DSP board and connectors are all included in a single, small, lightweight and protected chassis, and the perfect compatibility with the other Smart Series products allows to minimize efforts for mechanical development of different products. As for all Smart products, the Smart1.0 amplifier module is shaped and controlled using the DSP boards available to design the sound of the loudspeaker with a large set of processing algorithms.

To achieve best performance in terms of fidelity, output capability and coverage consistency across the audience it combines onboard state-of-the-art transducers and Powersoft amplifier module with a DSP programmable via remote control and at the same time allows networking connection. The management software Armonia-Pro audio suite allows to customize the sound based on the own specific needs and to upload 4 different standard presets for the most common applications.

Versatility is a key attribute of the Smart1.0.

It is designed to meet a multitude of premium stand-alone and distributed sound reinforcement requirements: theatre, touring and portable live sound applications, corporate events, concert hall.

Ideal as main PA in small-to-medium size rooms, it can also be used as an front/in/out-fill loudspeaker in large-scale systems supplemented by different subwoofers of the Smart Series.

The Smart1.0 can be pole-mounted using the box integrated socket, a complete range of rigging accessories make easier and faster other deployments such as wall-mounted, ceiling-mounted or stacked offering multiple set-up options and various orientations.

The system can also be suspended using the M8 threaded inserts (three on the top/bottom panel and two on the rear panel).

Great performances, compact dimensions and lightweight make the Smart1.0 incredibly smart & portable broadening the applications range, specially in mobile solutions.

Significant construction criteria, combined with the latest technologies and innovative materials, ensure a great reliability.

The Smart1.0 cabinet is constructed from Birch-ply and has an impact and weather protected PCP (Polyurea Cabinet Protection) finish.

The system can be as well matched with the Loud Professional Smart subwoofers range, significantly boosting its LF extension.

Smart Series

Technical Specifications Smart1.0

Frequency Range (+/-3dB)	65 Hz - 20 kHz (50 Hz @ -6 dB)
Nominal Directivity (-6dB) H x V	60° x 40° - Rotable
Maximum SPL Peak (LMF - MHF)	130 dB
Components LMF	1 x 10in. Ferrite cone driver
Components MHF	1 x 1in. exit Neodymium compression driver
Nominal Impedance LMF	8 Ω
Nominal Impedance MHF	8 Ω
Power Handling (AES / Peak) LMF	300 / 1.200 W
Power Handling (AES / Peak) MHF	50 / 200 W
Amplifier	Dual channel Class D amplifier (2 x 1.050 @ 8 Ω - on board DSP)
Connections	2 x Neutrik™ XLR (In / Out) 2 x Powercon™ (In / Out)
Enclosure Construction	18 / 24 mm Birch-ply
Finish	Black Polyurea PCP (Polyurea Cabinet Protection) finish
Protection Grille	Powder coated 2mm Metal Rigid Grille Acoustically Transparent Foam
Height Front (mm / in.)	576 / 22.67
Height Back (mm / in.)	576 / 22.67
Width Front (mm / in.)	389 / 15.31
Width Back (mm / in.)	219 / 8.62
Depth (mm / in.)	350 / 13.77
Weight (Kg / lb.)	23.5 / 51.80



Smart1.0 aspects

Features

- Dedicated Two-way Full-Range powered system <<
- Efficient Class D amplifier <<
- Programmable DSP, Remote control & Networking connector <<
- Four programmable DSP presets <<
- Clip limiter and permanent signal limiter <<
- Input volume potentiometer <<
- Female XLR input, male XLR link output, Powercons In & Out <<
- Two handles & 8 x M8 threaded inserts for easy setup <<
- Black PCP (Polyurea Cabinet Protection) finish <<
- Protection Bag <<

Smart Series

Smart1.2

Two-way Powered Full Range system



Applications

- >> Touring
- >> Theater
- >> Congress
- >> Club
- >> Portable

Smart Series is the next generation high performance powered loudspeaker system comprising three full range and three subwoofer models. Expressly designed for all applications where versatility, compact dimensions and lightweight are essential, while keeping great performances and high efficiency with no compromise.

Smart Series meets the needs of touring houses, installations, and the most demanding live sound applications ensuring they can deploy a no-compromise, all-in-one solution featuring the legendary Loud Professional performances and comfort listening.

Smart1.2 is a two way active full range system housing a 1.4in. (35mm) exit compression driver mounted on a 90° H x 60° V constant directivity horn and a 12in. (320mm) low-mid transducer loaded in bass reflex enclosure. The bass reflex optimized vented ports reduce turbulence and port noise at high levels while also increasing LF efficiency and extending the response down to 60 Hz.

A class D two channels amplifier module provides an exceptional output power, specifically designed for two channels applications where high output voltage level is required, its 2 x 1050 W at 8 Ω is the perfect engine to drive high power two-way full range systems.

Highest grade audio accuracy is guaranteed by fixed frequency switch mode output stage, avoiding any intermodulation artifact, and by the new "Control Plus" board allowing to achieve +6 dB more in terms of Signal-to-Noise Ratio.

The Smart amplifier module is an extremely compact solution: power supply, output stage, DSP board and connectors are all included in a single, small, lightweight and protected chassis, and the perfect compatibility with the other Smart Series products allows to minimize efforts for mechanical development of different products. As for all Smart products, the Smart1.2 amplifier module is shaped and controlled using the DSP boards available to design the sound of the loudspeaker with a large set of processing algorithms.

To achieve best performance in terms of fidelity, output capability and coverage consistency across the audience it combines onboard state-of-the-art transducers and Powersoft amplifier module with a DSP programmable via remote control and at the same time allows networking connection. The management software Armonia Pro audio suite allows to customize the sound based on the own specific needs and to upload 4 different standard presets for the most common applications.

Versatility is a key attribute of the Smart1.2.

It is designed to meet a multitude of premium stand-alone and distributed sound reinforcement requirements: theatre, touring and portable live sound applications, corporate events, concert hall.

Ideal as main PA in small-to-medium size rooms, it can also be used as an front/in/out-fill loudspeaker in large-scale systems supplemented by different subwoofers of the Smart Series.

The Smart1.2 can be pole-mounted using the box integrated socket, a complete range of rigging accessories make easier and faster other deployments such as wall-mounted, ceiling-mounted or stacked offering multiple set-up options and various orientations.

The system can also be suspended using the M8 threaded inserts (three on the top/bottom panel and two on the rear panel).

Great performances, compact dimensions and lightweight make the Smart1.2 incredibly smart & portable broadening the applications range, specially in mobile solutions.

Significant construction criteria, combined with the latest technologies and innovative materials, ensure a great reliability.

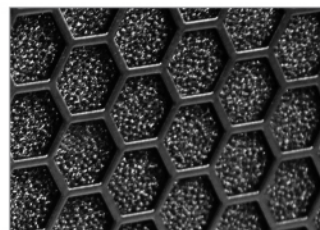
The Smart1.2 cabinet is constructed from Birch-ply and has an impact and weather protected PCP (Polyurea Cabinet Protection) finish.

The system can be as well matched with the Loud Professional Smart subwoofers range, significantly boosting its LF extension.

Smart Series

Technical Specifications Smart1.2

Frequency Range (+/-3dB)	60 Hz - 20 kHz (50 Hz @ -6 dB)
Nominal Directivity (-6dB) H x V	90° x 60° - Rotable (60° x 40° option)
Maximum SPL Peak (LMF - MHF)	134 dB
Components LMF	1 x 12in. Ferrite cone driver
Components MHF	1 x 1.4in. exit Neodymium compression driver
Nominal Impedance LMF	8 Ω
Nominal Impedance MHF	16 Ω
Power Handling (AES / Peak) LMF	650 / 2.600 W
Power Handling (AES / Peak) MHF	50 / 200 W
Amplifier	Dual channel Class D amplifier (2 x 1.050 @ 8 Ω - on board DSP)
Connections	2 x Neutrik™ XLR (In / Out) 2 x Powercon™ (In / Out)
Enclosure Construction	18 / 24 mm Birch-ply
Finish	Black Polyurea PCP (Polyurea Cabinet Protection) finish
Protection Grille	Powder coated 2mm Metal Rigid Grille Acoustically Transparent Foam
Height Front (mm / in.)	680 / 26.87
Height Back (mm / in.)	680 / 26.87
Width Front (mm / in.)	430 / 16.92
Width Back (mm / in.)	239 / 9.40
Depth (mm / in.)	380 / 14.96
Weight (Kg / lb.)	26 / 57.32



Smart1.2 aspects

Features

- Dedicated Two-way Full-Range powered system <<
- Efficient Class D amplifier <<
- Programmable DSP, Remote control & Networking connector <<
- Four programmable DSP presets <<
- Clip limiter and permanent signal limiter <<
- Input volume potentiometer <<
- Female XLR input, male XLR link output, Powercons In & Out <<
- Two handles & 8 x M8 threaded inserts for easy setup <<
- Black PCP (Polyurea Cabinet Protection) finish <<
- Protection Bag <<

Smart Series

Technical Specifications Smart1.5

Frequency Range (+/-3dB)	50 Hz - 20 kHz (50 Hz @ -6 dB)
Nominal Directivity (-6dB) H x V	90° x 60° - Rotable (60° x 40° option)
Maximum SPL Peak (LMF - MHF)	135 dB
Components LMF	1 x 15in. Ferrite cone driver
Components MHF	1 x 1.4in. exit Neodymium compression driver
Nominal Impedance LMF	8 Ω
Nominal Impedance MHF	16 Ω
Power Handling (AES / Peak) LMF	800 / 3200 W
Power Handling (AES / Peak) MHF	110 / 440 W
Amplifier	Dual channel Class D amplifier (2 x 1.050 @ 8 Ω - on board DSP)
Connections	2 x Neutrik™ XLR (In / Out) 2 x Powercon™ (In / Out)
Enclosure Construction	18 / 24 mm Birch-ply
Finish	Black Polyurea PCP (Polyurea Cabinet Protection) finish
Protection Grille	Powder coated 2mm Metal Rigid Grille Acoustically Transparent Foam for discrete appearance
Height Front (mm / in.)	575 / 22.63
Height Back (mm / in.)	575 / 22.63
Width Front (mm / in.)	585 / 23.03
Width Back (mm / in.)	585 / 23.03
Depth (mm / in.)	735 / 28.93
Weight (Kg / lb.)	50 / 110.23



Smart1.5 aspects

Features

- Dedicated Two-way Full-Range powered system <<
- Efficient Class D amplifier <<
- Programmable DSP, Remote control & Networking connector <<
- Four programmable DSP presets <<
- Clip limiter and permanent signal limiter <<
- Input volume potentiometer <<
- Female XLR input, male XLR link output, Powercons In & Out <<
- Two handles & 8 x M8 threaded inserts for easy setup <<
- Black PCP (Polyurea Cabinet Protection) finish <<
- Protection Bag <<

Smart Series

Smart Sub2.5R

Powered Sub-Bass enclosure



Applications

- >> Touring
- >> Theater
- >> Congress
- >> Club
- >> Portable

The Smart Series is the next generation high performance powered loudspeaker system comprising three full range and three subwoofer models, expressly designed for all applications where versatility, compact dimensions and lightweight are essential, while keeping great performances and high efficiency with no compromise.

Smart Series meets the needs of touring houses, installations, and the most demanding live sound applications ensuring they can deploy a no-compromise, all-in-one solution featuring the legendary Loud Professional performances and comfort listening.

Smart Sub2.5R is a double actively subwoofer system, housing two 15in. (380mm) long excursion transducer loaded in separated bass reflex enclosures.

The optimized vented ports reduce turbulence and port noise at high levels while also increasing LF efficiency and extending the response down to 35 Hz.

A class D four channels amplifier module provides an exceptional output power, specifically designed for two channels applications where high output voltage level is required, its 2 x 1500 W at 8 Ω (pair bridged) is the perfect engine to drive high power rock solid double subwoofers as the Smart Sub2.5R or Smart Sub2.8R.

Highest grade audio accuracy is guaranteed by fixed frequency switch mode output stage, avoiding any intermodulation artifact, and by the new "Control Plus" board allowing to achieve +6 dB more in terms of Signal-to-Noise Ratio.

The Smart amplifier module is an extremely compact solution: power supply, output stage, DSP board and connectors are all included in a single, small, lightweight and protected chassis, and the perfect compatibility with the other Smart Series products allows to minimize efforts for mechanical development of different products.

As for all Smart products, the Smart Sub2.5R amplifier module is shaped and controlled using the DSP boards available to design the sound of the loudspeaker with a large set of processing algorithms.

To achieve best performance in terms of fidelity, output capability across the audience it combines onboard state-of-the-art transducers and Powersoft amplifier module with a DSP programmable via remote control and at the same time allows networking connection.

The management software Armonia-Pro audio suite allows to customize the sound based on the own specific needs and to upload 4 different standard presets for the most common applications. Versatility is a key attribute of the Smart Sub2.5R. It is designed to meet a multitude of premium stand-alone and distributed sound reinforcement requirements: theatre, touring and portable live sound applications, corporate events, concert hall.

Ideal as the main PA in small-to-medium size rooms, it can also be used as an front/in/out-fill/drum-fill loudspeaker in large-scale systems supplemented by different full ranges of the Smart Series.

The M20 threaded insert integrated adapter on top panel allows the Smart full range to be stacked on.

Great performances, compact dimensions and lightweight make the Smart Sub2.5R incredibly smart & portable broadening the applications range, specially in mobile solutions. Significant construction criteria, combined with the latest technologies and innovative materials, ensure a great reliability.

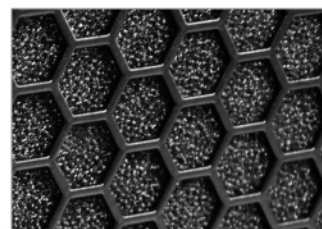
The Smart Sub2.5R cabinet is constructed from Birch-ply and has an impact and weather protected PCP (Polyurea Cabinet Protection) finish.

The system can be as well matched with the Loud Professional Smart full ranges, boosting their LF extension.

Smart Series

Technical Specifications Smart Sub2.5R

Frequency Range (+/-3dB)	35 Hz - 150 Hz
Nominal Directivity (-6dB) H x V	Omnidirectional
Maximum SPL Peak LF	142 dB
Components LF	2 x 15in. Ferrite cone driver
Nominal Impedance LF	8 + 8 Ω
Power Handling (AES / Peak) LF	2 x 1500 / 2 x 6000 W
Amplifier	Quad channel Class D amplifier (2 x 1500 @ 8 Ω, pair of channels bridged - on board DSP)
Connections	2 x Powercon™ (In / Out) - 2 x Neutrik™ XLR (In / Out)
Enclosure Construction	18 / 24 mm Birch-ply
Finish	Black Polyurea PCP (Polyurea Cabinet Protection) finish
Protection Grille	Powder coated 2mm Metal Rigid Grille
	Acoustically trasparent Foam for discrete appearance
Height Front (mm / in.)	930 / 36.61
Height Back (mm / in.)	930 / 36.61
Width Front (mm / in.)	585 / 23.03
Width Back (mm / in.)	585 / 23.03
Depth (mm / in.)	650 / 25.59
Weight (Kg / lb.)	80 / 176.36



Sub2.5R aspects

Features

- Powered Sub-Bass enclosure <<
- Efficient Class D amplifier <<
- Programmable DSP, Remote control & Networking connector <<
- Four programmable DSP presets <<
- Clip limiter & permanent signal limiter <<
- Input volume potentiometer <<
- Female XLR input, male XLR link output, Powercons In & Out <<
- Black PCP (Polyurea Cabinet Protection) finish <<
- Protection Bag <<

Smart Series

Smart Sub2.8R

Powered Sub-Bass enclosure



Applications

- >> Touring
- >> Theater
- >> Congress
- >> Club
- >> Portable

The Smart Series is the next generation high performance powered loudspeaker system comprising three full range and three subwoofer models, expressly designed for all applications where versatility, compact dimensions and lightweight are essential, while keeping great performances and high efficiency with no compromise.

Smart Series meets the needs of touring houses, installations, and the most demanding live sound applications ensuring they can deploy a no-compromise, all-in-one solution featuring the legendary Loud Professional performances and comfort listening.

Smart Sub2.8R is a double actively subwoofer system, housing two 18in. (460mm) long excursion transducer loaded in separated bass reflex enclosures.

The optimized vented ports reduce turbulence and port noise at high levels while also increasing LF efficiency and extending the response down to 32 Hz.

A class D four channels amplifier module provides an exceptional output power, specifically designed for two channels applications where high output voltage level is required, its 2 x 1500 W at 8 Ω (pair bridged) is the perfect engine to drive high power rock solid double subwoofers as the Smart Sub2.5R or Smart Sub2.8R.

Highest grade audio accuracy is guaranteed by fixed frequency switch mode output stage, avoiding any intermodulation artifact, and by the new "Control Plus" board allowing to achieve +6 dB more in terms of Signal-to-Noise Ratio.

The Smart amplifier module is an extremely compact solution: power supply, output stage, DSP board and connectors are all included in a single, small, lightweight and protected chassis, and the perfect compatibility with the other Smart Series products allows to minimize efforts for mechanical development of different products.

As for all Smart products, the Smart Sub2.8R amplifier module is shaped and controlled using the DSP boards available to design the sound of the loudspeaker with a large set of processing algorithms.

To achieve best performance in terms of fidelity, output capability across the audience it combines onboard state-of-the-art transducers and Power-soft amplifier module with a DSP programmable via remote control and at the same time allows networking connection.

The management software Armonia-Pro audio suite allows to customize the sound based on the own specific needs and to upload 4 different standard presets for the most common applications. Versatility is a key attribute of the Smart Sub2.8R.

It is designed to meet a multitude of premium stand-alone and distributed sound reinforcement requirements: theatre, touring and portable live sound applications, corporate events, concert hall.

Ideal as the main PA in small-to-medium size rooms, it can also be used as an front/in/out-fill/drum-fill loudspeaker in large-scale systems supplemented by different full ranges of the Smart Series. The M20 threaded insert integrated adapter on top panel allows the Smart full range to be stacked on. Great performances, compact dimensions and lightweight make the Smart Sub2.8R incredibly smart & portable broadening the applications range, specially in mobile solutions.

Significant construction criteria, combined with the latest technologies and innovative materials, ensure a great reliability.

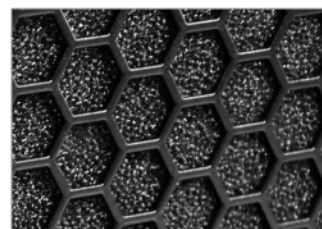
The Smart Sub2.8R cabinet is constructed from Birch-ply and has an impact and weather protected PCP (Polyurea Cabinet Protection) finish.

The system can be as well matched with the Loud Professional Smart full ranges, boosting their LF extension.

Smart Series

Technical Specifications Smart Sub2.8R

Frequency Range (+/-3dB)	32 Hz - 150 Hz
Nominal Directivity (-6dB) H x V	Omnidirectional
Maximum SPL Peak LF	142 dB
Components LF	2 x 18in. Ferrite cone driver
Nominal Impedance LF	8 + 8 Ω
Power Handling (AES / Peak) LF	2 x 1500 / 2 x 6000 W
Amplifier	Quad channel Class D amplifier (2 x 1500 @ 8 Ω , pair of channels bridged - on board DSP)
Connections	2 x Powercon™ (In / Out) - 2 x Neutrik™ XLR (In / Out)
Enclosure Construction	18 / 24 mm Birch-ply
Finish	Black Polyurea PCP (Polyurea Cabinet Protection) finish
Protection Grille	Powder coated 2mm Metal Rigid Grille
	Acoustically trasparent Foam for discrete appearance
Height Front (mm / in.)	1160 / 45.66
Height Back (mm / in.)	1160 / 45.66
Width Front (mm / in.)	585 / 23.03
Width Back (mm / in.)	585 / 23.03
Depth (mm / in.)	735 / 28.93
Weight (Kg / lb.)	101 / 222.66



Sub2.8R aspects

Features

- Powered Sub-Bass enclosure <<
- Efficient Class D amplifier <<
- Programmable DSP, Remote control & Networking connector <<
- Four programmable DSP presets <<
- Clip limiter & permanent signal limiter <<
- Input volume potentiometer <<
- Female XLR input, male XLR link output, Powercons In & Out <<
- Black PCP (Polyurea Cabinet Protection) finish <<
- Protection Bag <<

Smart Series

Smart Sub1.8H

Powered Sub-Bass enclosure



Applications

- >> Touring
- >> Theater
- >> Congress
- >> Club
- >> Portable

The Smart Series is the next generation high performance self powered loudspeaker system comprising three full range and three subwoofer models, expressly designed for all applications where versatility, compact dimensions and lightweight are essential, while keeping great performances and high efficiency with no compromise.

Smart Series meets the needs of touring houses, installations, and the most demanding live sound applications ensuring they can deploy a no-compromise, all-in-one solution featuring the legendary Loud Professional performances and comfort listening.

Smart Sub1.8H is a fully Horn loaded system housing a single 18in. (460mm) long excursion transducer.

The optimized horn loading path consistently increases the LF efficiency also extending the frequency response.

Considering the compact dimensions and the system type, extended is the low frequency reproduction, specially in the lower end region where the unit is able to reproduce frequencies down to 45 Hz with a plenty and sensational sound impact for an unrivaled Bass-punch as you've never heard before! The result becomes more evident specially when coupling several units in a large array for really long throw applications.

The special system ability to control the transducers linear excursion keep really low the total harmonic distortion levels, still maintaining a great linearity in the lower frequency reproduction for the fastest transient response all over conditions.

A class D two channels amplifier module provides an exceptional output power, specifically designed for mono bridge applications where high output voltage level is required for only one amplification channel. It's the perfect engine to drive high power rock solid single subwoofer as the Smart Sub1.8H. Highest grade audio accuracy is guaranteed by fixed frequency switch mode output stage, avoiding any intermodulation artifact, and by the new "Control Plus" board allowing to achieve +6 dB more in terms of Signal-to-Noise Ratio.

The Smart amplifier module is an extremely compact solution: power supply, output stage, DSP board and connectors are all included in a single, small, lightweight and protected chassis, and the perfect compatibility with the other Smart Series products allows to minimize efforts for mechanical development of different products.

As for all Smart products, the Smart Sub1.8H amplifier module is shaped and controlled using the DSP boards available to design the sound of the loudspeaker with a large set of processing algorithms.

To achieve best performance in terms of fidelity, output capability across the audience it combines onboard state-of-the-art transducers and Power-soft amplifier module with a DSP programmable via remote control and at the same time allows networking connection.

The management software Armonia-Pro audio suite allows to customize the sound based on the own specific needs and to upload 4 different standard presets for the most common applications. Versatility is a key attribute of the Smart Sub1.8H. It is designed to meet a multitude of premium stand-alone and distributed sound reinforcement requirements: theatre, touring and portable live sound applications, corporate events, concert hall. Ideal as the main PA in small-to-medium size rooms, it can also be used as an front/in/out-fill/drum-fill loudspeaker in large-scale systems supplemented by different full ranges of the Smart Series. The M20 threaded insert integrated adapter on top panel allows the Smart full range to be stacked on. Great performances, compact dimensions and lightweight make the Smart Sub1.8H incredibly smart & portable broadening the applications range, specially in mobile solutions.

Significant construction criteria, combined with the latest technologies and innovative materials, ensure a great reliability.

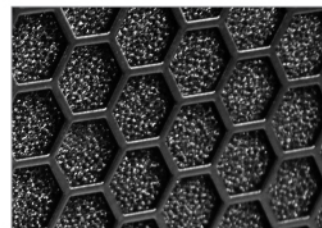
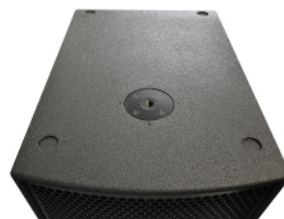
The Smart Sub1.8H cabinet is constructed from Birch-ply and has an impact and weather protected PCP (Polyurea Cabinet Protection) finish.

The system can be as well matched with the Loud Professional Smart full ranges, boosting their LF extension.

Smart Series

Technical Specifications Smart Sub1.8H

Frequency Range (+/-3dB)	45 Hz - 150 Hz
Nominal Directivity (-6dB) H x V	Omnidirectional
Maximum SPL Peak (LM - MHF)	140 dB
Components LF	1 x 18in. Ferrite cone driver
Nominal Impedance LF	8 Ω
Power Handling (AES / Peak) LF	1500 / 6000 W
Amplifier	Dual channel Class D amplifier (1 x 1500 @ 8 Ω , pair of channels bridged - on board DSP)
Connections	2 x Powercon™ (IN / OUT) - 2 x Neutrik™ XLR (IN / Out)
Enclosure Construction	18 / 24 mm Birch-ply
Finish	Black Polyurea PCP (Polyurea Cabinet Protection) finish
Protection Grille	Powder coated 2mm Metal Rigid Grille
	Acoustically trasparent Foam for discrete appearance
Height Front (mm / in.)	701 / 27.59
Height Back (mm / in.)	701 / 27.59
Width Front (mm / in.)	530 / 20.86
Width Back (mm / in.)	530 / 20.86
Depth (mm / in.)	769 / 30.27
Weight (Kg / lb.)	62 / 136.68



Sub1.8H aspects

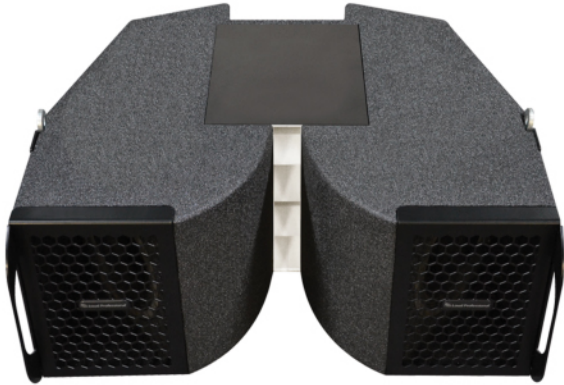
Features

- Powered Sub-Bass enclosure <<
- Efficient Class D amplifier <<
- Programmable DSP, Remote control & Networking connector <<
- Four programmable DSP presets <<
- Clip limiter & permanent signal limiter <<
- Input volume potentiometer <<
- Female XLR input, male XLR link output, Powercons In & Out <<
- Black PCP (Polyurea Cabinet Protection) finish <<
- Protection Bag <<

Smart Series

FocusEight

Two-way Line-Array enclosure



FocusEight is an ultra compact two-way Line-Array enclosure designed for a wide range of medium scale touring, fixed and temporary applications, operating from 65 Hz up to kHz.

It consists of two 8in. low-mid frequency drivers and 1.5in. exit compression driver mounted on a proprietary double parabolic waveguide, giving a dispersion of 70° x 10° on the Horizontal and Vertical axis.

Narrower is the horizontal dispersion compared to traditional Line Array enclosures of equal size, making this system particularly suitable in high reverberant venues.

FocusEight is designed to combine a compact and lightweight enclosure and high performances with a dedicated LMF extension delivering the necessary output when a reinforced contour is desired.

FocusEight hardware flying system allows to build arrays up to 24 units. The box integrated rigging system provides the necessary inclination with a resolution from 0 to 10 degrees.

The flybar main frame is also designed for stacked applications, whenever is necessary install the system directly on the floor.

Its compact dimensions provide the perfect solution in all applications where no-high ceiling venues require clarity, intelligibility and precision for vocal speech, lead instruments at high levels.

Significant building criteria, the employment of the latest technologies and innovative materials, are able to guarantee great reliability and longevity.

FocusEight cabinet is constructed from Birch-ply and has an impact and weather protected PCP (Polyurea Cabinet Protection) finish.

The system can be as well matched with all the most challenging Loud Professional Formula & VH subwoofers, significantly boosting its LF extension.

Applications

- >> Touring
- >> Theater
- >> Congress
- >> Club
- >> Portable

Focus Series

Technical Specifications FocusEight

Frequency Range (+/-3dB)	65 Hz - 20 kHz
Nominal Directivity (-6dB) H x V	70° x 10°
Maximum SPL Peak (LMF / MHF)	136 / 141 dB
Components LMF	2 x 8in. Nodymium cone driver
Components MHF	1 x 1.5in. exit Neodymium compression driver
Nominal Impedance LMF	8 Ω
Nominal Impedance MHF	16 Ω
Power Handling (AES / Peak) LMF	650 / 2.600 W
Power Handling (AES / Peak) MHF	160 / 640 W
Connections	2 x SpeakON™ NL4
Enclosure Construction	18 / 24 mm Birch-ply
Finish	Black Polyurea PCP (Polyurea Cabinet Protection) finish
Protection Grille	Powder coated 2mm Metal Rigid Grille
	Acoustically transparent Foam for discrete appearance
Height Front (mm / in.)	270 / 10.62
Height Back (mm / in.)	200 / 07.87
Width Front (mm / in.)	650 / 25.59
Width Back (mm / in.)	485 / 19.09
Depth (mm / in.)	570 / 22.44
Weight (Kg / lb.)	29 / 63.93



FocusEight aspects

Features

- Ultra compact Line Array enclosure <<
- Special 2 x 8in. Band-pass design <<
- 1.5in. exit compression driver HF unit <<
- Proprietary double parabolic waveguide <<
- Narrow horizontal dispersion <<
- Extended low-mid reproduction <<
- Sensational vocal intelligibility <<
- Compact & Lightweight <<
- PCP Polyurea coated paint <<
- Protection Bag <<
- Professional Flightcase (3 units) <<

Focus Series

MicrHome

Ultra compact Two-way Full Range system



MicrHome is the ideal partner for home audio applications, it's quite literally the perfect fit for all everyday needs, accompanying your Home Cinema as well as making you listen to good music or helping you to play and compose on your computer...MicrHome it's always an excellent reference! The special and elegant "Black & White" design, which stands out for the unique Soft Touch finish, features a 6.5in. Low-Mid coaxial transducer with a built-in 70 deg. conical high frequency waveguide.

The HF unit, coaxially assembled in the same Low-Mid magnet structure, comprises a 1in. exit compression driver performing an incomparable flat and smooth frequency response up to 20 kHz.

A single Bass-reflex optimized vented port reduces turbulence and port noise, while increasing the LF system efficiency and extending its response to 65 Hz, such as a true stand alone system.

It can also be successfully supplemented with the MicrHome Sub to further extend its lower response down to 45 Hz, always offering the legendary Loud Professional comfort listening.

A complete range of rigging accessories makes easier and faster all the deployments as wall/ceiling-mounted, offering multiple set-up options and various orientations.

A pole mounting kit (Bracket, Adapter & Distance Rod) allows the speaker to be pole mounted on a standard speaker stand or on top of a Sub/Bass unit.

MicrHome can also stand on the floor using a particular metal plate.

Significant construction criteria, combined with the latest technologies and innovative materials, ensure a great reliability over time.

MicrHome cabinet is constructed from MDF Hydro and has a Polyurethane Soft Touch finish.

Applications

- >> Houses & Apartments
- >> Lounge Bars & Restaurants
- >> Shops
- >> Small Clubs
- >> Ceremonies

MicrHome Series

Technical Specifications

MicrHome

Frequency Range (+/-3dB)	75 Hz - 20 kHz (65 Hz @ -10 dB)
Nominal Directivity (-6dB) H x V	70° x 70°
Maximum SPL Peak (LMF - MHF)	123 dB
Components (LMF - MHF)	Coaxial 1 x 6.5in. Neodymium cone driver 1 x 1in. exit Neodymium compression driver
Nominal Impedance (LMF - MHF)	8 Ω (Internal passive network)
Power Handling (AES / Peak)	200 / 800 W
Connections	2 x Phoenix™ NL4 Connectors
Enclosure Construction	18 mm Birch-ply
Finish	Black or White Polyurea PCP (Polyurea Cabinet Protection) finish
Protection Grille	N.A.
Height Front (mm / in.)	220 / 08.65
Height Back (mm / in.)	220 / 08.65
Width Front (mm / in.)	350 / 13.77
Width Back (mm / in.)	350 / 13.77
Depth (mm / in.)	235 / 09.25
Weight (Kg / lb.)	8 / 17.63
Supported Processing	Armonia Pro Audio Suite & Armonia Plus



MicrHome aspects

Features

- Ultra compact Two-way passive system <<
- Incomparable flat and smooth response up to 20 kHz <<
- Extended Low-mid reproduction below 65 Hz <<
- Great flexibility for both Rental and Installation market <<
- Complete range of accessories available <<
- Combination with MicrHome Sub, boosting the LF Extension <<
- Finest Black PCP (Polyurea Cabinet Protection) finish <<

MicrHome Series

MicrHome Mini

Two-way Mini Full Range system



MicrHome Mini is the ideal partner for home audio applications, it's quite literally the perfect fit for all everyday needs, accompanying your Home Cinema as well as making you listen to good music or helping you to play and compose on your computer...Mini is always an excellent reference! The special and elegant design, which stands out for the Soft Touch finish, features a 4in. Low-Mid transducer and a 1in. soft dome tweeter that provides an exceptional flat and smooth high frequency response up to 20 kHz.

Despite of the small dimension, the 4in. Low-Mid transducer is capable of delivering great performances, extending its frequency response down to 130 Hz (110 @ -10dB).

It's normally configured with the MicrHome Sub to further extend the LF contour down to 45 Hz, always offering the legendary Loud Professional comfort listening.

Mini can also be successfully used as Rear Surround system in combination with MicrHome (The Main Front L/C/R) and MicrHome Nano (Surround effects).

A complete range of rigging accessories makes easier and faster all the deployments as wall/ceiling-mounted, offering multiple set-up options and various orientations.

A pole mounting kit (Bracket, Adapter & Distance Rod) allows the speaker to be pole mounted on a standard speaker stand or on top of a Sub/Bass unit.

Mini can also stand on the floor using a particular metal plate.

Significant construction criteria, combined with the latest technologies and innovative materials, ensure a great reliability over time.

MicrHome Mini cabinet is constructed from MDF Hydro and has a Polyurethane Soft Touch finish.

Applications

- >> Houses & Apartments
- >> Broadcast (accompanied by MicrHome Sub)
- >> Shops & Commercial Activities
- >> Lounge Bars & Restaurants
- >> Ceremonies

MicrHome Series

Technical Specifications

MicrHome

Frequency Range (+/-3dB)	130 Hz - 20 kHz (110 Hz @ -10 dB)
Nominal Directivity (-6dB) H x V	120° x 120°
Maximum SPL Peak (LMF - MHF)	114 dB
Components (LMF - MHF)	1 x 4in. Neodymium cone driver 1 x 1in. Neodymium soft dome tweeter
Nominal Impedance (LMF - MHF)	8 Ω (Internal passive network)
Power Handling (AES / Peak)	40 / 160 W
Connections	2 x Phoenix™ Connectors
Enclosure Construction	15 mm MDF Hydro
Finish	Black or White Polyurethane Soft Touch finish
Protection Grille	N.A.
Height Front (mm / in.)	240 / 09.44
Height Back (mm / in.)	240 / 09.44
Width Front (mm / in.)	140 / 05.51
Width Back (mm / in.)	140 / 05.51
Depth (mm / in.)	140 / 05.51
Weight (Kg / lb.)	2.25 / 04.96
Supported Processing	Armonia Pro Audio Suite & Armonia Plus



MicrHome aspects

Features

- Ultra compact Two-way passive system <<
- Incomparable flat and smooth response up to 20 kHz <<
- Extended Low-mid reproduction below 110 Hz <<
- Great flexibility as installation-specific product <<
- Complete range of accessories available <<
- Combination with MicrHome Sub, boasting the LF Extension <<
- Finest Polyurethane Soft Touch finish <<

MicrHome Series

Table of Contents	About Us	Formula Series	Formula Sub Series	VH e-motion Series	VH Full Range Series	VH Layer Series	VH Monitor Series	VH Subwoofer Series	VH Micro Series	Smart Series	Focus Series	MicrHome Series	Gamma Series	Nucleo Series	Quadra Series	AirStudio Series	PowerRack Series
-------------------	----------	----------------	--------------------	--------------------	----------------------	-----------------	-------------------	---------------------	-----------------	--------------	--------------	------------------------	--------------	---------------	---------------	------------------	------------------

MicrHome Nano

Ultra compact Mini Full Range system



MicrHome Nano is the ideal partner for home audio applications, it's quite literally the perfect fit for all everyday needs, accompanying your Home Cinema as well as making you listen to good music or helping you to play and compose on your computer...Nano is always an excellent reference! The special and elegant design, which stands out for the Soft Touch finish and the box rounded corners, features a single 2in. full range transducer that provides an exceptional flat and smooth frequency response from 130 Hz up to 20 kHz.

Despite of the ultra-compact dimension, the 2in. small full range is capable of delivering great performances as you cannot expect from box of that size, when combined with a Sub/Bass unit.

It's normally configured with the MicrHome Sub to further extend the LF contour down to 45 Hz, always offering the legendary Loud Professional comfort listening.

Mini can also be successfully used for Surround effects in combination with MicrHome (The Main Front L/C/R) and MicrHome Mini (The Rear L/R).

A complete range of rigging accessories makes easier and faster all the deployments as wall/ceiling-mounted, offering multiple set-up options and various orientations.

A pole mounting kit (Bracket, Adapter & Distance Rod) allows the speaker to be pole mounted on a standard speaker stand or on top of a Sub/Bass unit.

Nano can also stands from the floor using a vertical microphone stand.

Significant construction criteria, combined with the latest technologies and innovative materials, ensure a great reliability over time.

MicrHome Nano cabinet is constructed from MDF Hydro and has a Polyurethane Soft Touch finish.

Applications

- >> Houses & Apartments
- >> Shops & Commercial Activities
- >> Lounge Bars & Restaurants
- >> Ceremonies

MicrHome Series

Technical Specifications

MicrHome

Frequency Range (+/-3dB)	75 Hz - 20 kHz
Nominal Directivity (-6dB) H x V	70° x 70°
Maximum SPL Peak (LMF - MHF)	123 dB
Components (LMF - MHF)	Coaxial 1 x 6.5in. Neodymium cone driver 1 x 1in. exit Neodymium compression driver
Nominal Impedance (LMF - MHF)	8 Ω (Internal passive network)
Power Handling (AES / Peak)	200 / 800 W
Connections	2 x SpeakON™ NL4
Enclosure Construction	18 mm Birch-ply
Finish	Black or White Polyurea PCP (Polyurea Cabinet Protection) finish
Protection Grille	N.A.
Height Front (mm / in.)	220 / 08.65
Height Back (mm / in.)	220 / 08.65
Width Front (mm / in.)	350 / 13.77
Width Back (mm / in.)	350 / 13.77
Depth (mm / in.)	235 / 09.25
Weight (Kg / lb.)	8 / 17.63
Supported Processing	Armonia Pro Audio Suite & Armonia Plus



MicrHome aspects

Features

- Ultra compact Two-way passive system <<
- Incomparable flat and smooth response up to 20 kHz <<
- Extended Low-mid reproduction below 65 Hz <<
- Great flexibility for both Rental and Installation market <<
- Complete range of accessories available <<
- Combination with MicrHome Sub, boasting the LF Extension <<
- Finest Black PCP (Polyurea Cabinet Protection) finish <<

MicrHome Series

MicrHome Sub

Ultra compact Sub-Bass enclosure



MicrHome Sub is the ideal partner for everyday home audio applications, it is quite literally the perfect fit for all everyday needs.

The elegant design houses a single 8in. long excursion woofer loaded in a particular Band-pass enclosure. It provides a greater control over cone-motion, reducing the total harmonic distortion (THD) for an accurate and extremely smooth reproduction, not comparable with traditional direct radiating subwoofer system of the same transducer dimension.

The Bass-reflex optimized vented port reduces turbulence and port noise, while also increasing LF efficiency and extending the lower response down to 45 Hz (35 Hz @ -10 dB). This noted ability makes MicrHome Sub an ideal companion in Home Dolby Cinema applications as well as Broadcast and Studio Recording.

The system can be successfully supplemented with the MicrHome, MicrHome Mini and MicrHome Nano, passive Two-way and small Full Range systems, always delivering the Loud Professional legendary listening comfort up to 20 kHz.

Significant construction criteria, combined with the latest technologies and innovative materials, ensure a great reliability over time. MicrHome Sub cabinet is constructed from MDF Hydro and has a Polyurethane Soft Touch finish.

Applications

- >> Conference Halls
- >> Theaters
- >> Ceremonies
- >> Shops & Commercial Centers
- >> Small Clubs, Pubs, Lounge Bars & Restaurants

MicrHome Series

Technical Specifications MicrHome Sub

Frequency Range (+/-3dB)	45 Hz - 200 Hz (35 Hz @ -10 dB)
Nominal Directivity (-6dB) H x V	Omnidirectional
Maximum SPL Peak LF	121 dB
Components LF	1 x 8in. Ferrite cone driver
Nominal Impedance	8 Ω
Power Handling (AES / Peak)	350 / 1.400 W
Connections	2 x Phoenix™ 4 Pole Connectors
Enclosure Construction	18 MDF Hydro
Finish	Black or White Polyurethane Soft Touch finish
Protection Grille	Powder coated 1.5mm Metal Rigid Grille
	Acoustically Transparent Cloth for discrete appearance
Height Front (mm / in.)	310 / 12.20
Height Back (mm / in.)	310 / 12.20
Width Front (mm / in.)	630 / 24.80
Width Back (mm / in.)	630 / 24.80
Depth (mm / in.)	450 / 17.51
Weight (Kg / lb.)	21 / 46.29



MicrHome aspects



Features

- Band-pass design <<
- Compact & light weight enclosure <<
- Single 8 in. high performance woofer (350 W AES) <<
- Extended low frequency response and higher SPL capabilities <<
- Large reflex ports for reduced air noise <<
- Greater bass impact & unrivaled tonal accuracy <<
- Proprietary wall/ceiling bracket for suspension options <<
- Black or White Polyurethane Soft Touch finish <<
- Protection Bag <<

MicrHome Series

Table of Contents	About Us	Formula Series	Formula Sub Series	VH e-motion Series	VH Full Range Series	VH Layer Series	VH Monitor Series	VH Subwoofer Series	VH Micro Series	Smart Series	Focus Series	MicrHome Series	Gamma Series	Nucleo Series	Quadra Series	AirStudio Series	PowerRack Series
-------------------	----------	----------------	--------------------	--------------------	----------------------	-----------------	-------------------	---------------------	-----------------	--------------	--------------	------------------------	--------------	---------------	---------------	------------------	------------------

Gamma5

Two-way Full Range system



Gamma5 is an installation-specific product, the Gamma Series smallest one! As each Gamma extended range speaker it features the Co-linear concept, housing a state of the art coaxial 5in. transducer.

The Co-linear design approach physically aligns LMF and HF acoustic centers to obtain a single point source configuration, delivering a coherent wavefront output across the entire reproducible frequencies spectrum, free of comb-filtering effects generated by traditional transducers couplings.

The result is an incomparable phase response, only recognizable in high quality studio reference monitors, bringing studio quality to short-medium throw professional sound reinforcement.

Its conical waveguide gives a dispersion of 70 deg. on both Vertical and Horizontal axis. The same HF directivity pattern makes all Gamma extended range speakers compatible each other, key factor extremely useful in every permanent or temporary installation. The optimized vented box offers an efficient lower response down to 85 Hz despite of the smaller cone driver dimension.

The Gamma5 double angled enclosure can be successfully employed as multipurpose system as well as: Stage monitor, PA or Front Fills and In/Out Fills, from small to medium-sized venue.

The really low profile makes the speaker extremely useful in all applications where not so high ceilings require small dimensions.

The system can be successfully supplemented with the GammaS8 Sub/Bass enclosure to further extend its lower response down to 45 Hz, always offering the Loud Professional legendary listening comfort.

A complete range of rigging accessories makes easier and faster all the deployments such as ceiling-mounted or stacked offering multiple set-up options and various orientations.

Significant construction criteria, combined with the latest technologies and innovative materials, ensure a great reliability over time.

Gamma5 cabinet is constructed from marine Birch-ply and has an impact and weather protected PCP (Polyurea Cabinet Protection) finish.

A color range (RAL Architectural program) makes all Gamma speakers, for an easy integration, most appropriate for each installation depending on the architectural and furniture requirements.

Applications

- >> Conference Halls
- >> Theaters
- >> Ceremonies
- >> Shops & Commercial Centers
- >> Small Clubs, Pubs, Lounge Bars & Restaurants

Gamma Series

Technical Specifications Gamma5

Frequency Range (+/-3dB)	80 Hz - 20 kHz (70 Hz @ -10 dB)
Nominal Directivity (-6dB) H x V	70° x 70° - Conical
Maximum SPL Peak (LMF - MHF)	121 dB
Components LMF	1 x 5in. Neodymium cone driver
Components MHF	1 x 1in. exit Neodymium compression driver
Nominal Impedance	8 or 16 Ω
Power Handling (AES / Peak)	150 / 600 W
Connections	2 x SpeakON™ NL4 - 1 x SpeakON™ NL4 Paralleled - Bottom side
Enclosure Construction	12 mm Birch-ply
Finish	Black or White Polyurea PCP (Polyurea Cabinet Protection) finish
Protection Grille	(Optional custom color, refer to the User Manual) Powder coated 1.5mm Metal Rigid Grille Acoustically Transparent Foam for discrete appearance (Optional custom color, refer to the User Manual)
Height Front (mm / in.)	300 / 11.81
Height Back (mm / in.)	300 / 11.81
Width Front (mm / in.)	170 / 06.69
Width Back (mm / in.)	68 / 02.67
Depth (mm / in.)	201 / 07.91
Weight (Kg / lb.)	4.5 / 09.92
Supported Processing	Armonia Pro Audio Suite & Armonia Plus



Gamma5 aspects



Features

- Multipurpose, double angled Full-Range system <<
- Co-linear LMF - MHF design concept <<
- High performance 70°H x 70°V Conical coverage <<
- Great axial 70° uniformity coverage pattern <<
- Greater bass extension and higher SPL capabilities <<
- IN/OUT Rear & Bottom sides NL4 SpeakON connectors <<
- Horizontal & Vertical brackets <<
- Optional Custom Color PCP (Polyurea Cabinet Protection) finish <<
- Flightcase (4 units) <<

Gamma Series

Gamma6

Two-way Full Range system



Gamma6 is an installation-specific product, one of the smallest Loud Professional Full Range system. As each Gamma extended range speaker it features the Co-linear concept, housing a state of the art coaxial 6.5in. transducer.

The Co-linear design approach physically aligns LMF and HF acoustic centers to obtain a single point source configuration, delivering a coherent wavefront output across the entire reproducible frequencies spectrum, free of comb-filtering effects generated by traditional transducers couplings.

The result is an incomparable phase response, only recognizable in high quality studio reference monitors, bringing studio quality to short-medium throw professional sound reinforcement.

Its conical waveguide gives a dispersion of 70 deg. on both Vertical and Horizontal axis. The same HF directivity pattern makes all Gamma extended range speakers compatible each other, key factor extremely useful in every permanent or temporary installation. The optimized vented box offers an efficient lower response down to 65 Hz despite of the smaller cone driver dimension.

The Gamma6 double angled enclosure can be successfully employed as multipurpose system as well as: Stage monitor, PA or Front Fills and In/Out Fills, from small to medium-sized venue.

The really low profile makes the speaker extremely useful in all applications where not so high ceilings require small dimensions.

The system can be successfully supplemented with the Gamma subwoofer enclosures, boosting its lower response and always offering the Loud Professional legendary listening comfort.

A complete range of rigging accessories makes easier and faster all the deployments such as ceiling-mounted or stacked offering multiple set-up options and various orientations.

Significant construction criteria, combined with the latest technologies and innovative materials, ensure a great reliability over time.

Gamma6 cabinet is constructed from marine Birch-ply and has an impact and weather protected PCP (Polyurea Cabinet Protection) finish.

A color range (RAL Architectural program) makes all Gamma speakers, for an easy integration, most appropriate for each installation depending on the architectural and furniture requirements.

Applications

- >> Conference Halls
- >> Theaters
- >> Ceremonies
- >> Shops & Commercial Centers
- >> Small Clubs, Pubs, Lounge Bars & Restaurants

Gamma Series

Technical Specifications Gamma6

Frequency Range (+/-3dB)	75 Hz - 20 kHz (65 Hz @ -10 dB)
Nominal Directivity (-6dB) H x V	70° x 70° - Conical
Maximum SPL Peak (LMF - MHF)	121 dB
Components LMF	1 x 6.5in. Neodymium cone driver
Components MHF	1 x 1in. exit Neodymium compression driver
Nominal Impedance	8 or 16 Ω
Power Handling (AES / Peak)	200 / 800 W
Connections	3 x SpeakON™ NL4 (Two on the Rear side, on the bottom side)
Enclosure Construction	12 mm Birch-ply
Finish	Black or White Polyurea PCP (Polyurea Cabinet Protection) finish
Protection Grille	(Optional custom color, refer to the User Manual) Powder coated 1.5mm Metal Rigid Grille Acoustically Transparent Foam for discrete appearance (Optional custom color, refer to the User Manual)
Height Front (mm / in.)	350 / 13.77
Height Back (mm / in.)	350 / 13.77
Width Front (mm / in.)	200 / 07.87
Width Back (mm / in.)	81 / 03.18
Depth (mm / in.)	231 / 09.11
Weight (Kg / lb.)	5 / 11.02
Supported Processing	Armonia Pro Audio Suite & Armonia Plus



Gamma6 aspects



Co-linear Technology

Features

- Multipurpose, double angled Full-Range system <<
- Co-linear LMF - MHF design concept <<
- High performance 70°H x 70°V Conical coverage <<
- Great axial 70° uniformity coverage pattern <<
- Greater bass extension and higher SPL capabilities <<
- IN/OUT Rear & Bottom sides NL4 SpeakON connectors <<
- Horizontal & Vertical brackets <<
- Optional Custom Color PCP (Polyurea Cabinet Protection) finish <<
- Flightcase (4 units) <<

Gamma Series

Gamma8

Two-way Full Range system



Gamma8 is an installation-specific product, the mid-sized of the Gamma speaker range. As each Gamma model, it features the Co-linear concept, housing a state of the art coaxial 8in. transducer.

The Co-linear design approach physically aligns LMF and HF acoustic centers to obtain a single point source configuration, delivering a coherent wavefront output across the entire reproducible frequencies spectrum, free of comb-filtering effects generated by traditional transducers couplings.

The result is an incomparable phase response, only recognizable in high quality studio reference monitors, bringing studio quality to short-medium throw professional sound reinforcement.

Its conical waveguide gives a dispersion of 70 deg. on both Vertical and Horizontal axis. The same HF directivity pattern makes all Gamma extended range speakers compatible each other, key factor extremely useful in every permanent or temporary installation. The optimized vented box offers an efficient lower response down to 60 Hz (@ -10 dB) despite of its small cone driver dimension.

The Gamma8 double angled enclosure can be successfully employed as multipurpose system as well as: Stage monitor, PA or Front Fills and In/Out Fills, from small to medium-sized venue.

The really low profile makes the speaker extremely useful in all applications where not so high ceilings require small dimensions.

The system can be successfully supplemented with the Gamma subwoofer enclosures, boosting its lower response and always offering the Loud Professional legendary listening comfort.

A complete range of rigging accessories makes easier and faster all the deployments such as ceiling-mounted or stacked offering multiple set-up options and various orientations.

Significant construction criteria, combined with the latest technologies and innovative materials, ensure a great reliability over time.

Gamma8 cabinet is constructed from marine Birch-ply and has an impact and weather protected PCP (Polyurea Cabinet Protection) finish.

A color range (RAL Architectural program) makes all Gamma speakers, for an easy integration, most appropriate for each installation depending on the architectural and furniture requirements.

Applications

- >> Conference Halls
- >> Theaters
- >> Ceremonies
- >> Shops & Commercial Centers
- >> Small Clubs, Pubs, Lounge Bars & Restaurants

Gamma Series

Technical Specifications Gamma8

Frequency Range (+/-3dB)	65 Hz - 20 kHz (60 Hz @ -10 dB)
Nominal Directivity (-6dB) H x V	70° x 70° - Conical
Maximum SPL Peak (LMF - MHF)	127 dB
Components LMF	1 x 8in. Neodymium cone driver
Components MHF	1 x 1in. exit Neodymium compression driver
Nominal Impedance	8 Ω
Power Handling (AES / Peak)	250 / 1.000 W
Connections	2 x SpeakON™ NL4 - 1 x SpeakON™ NL4 Paralleled - Bottom side
Enclosure Construction	12 mm Birch-ply
Finish	Black or White Polyurea PCP (Polyurea Cabinet Protection) finish
Protection Grille	(Optional custom color, refer to the User Manual)
	Powder coated 1.5mm Metal Rigid Grille
	Acoustically Transparent Foam for discrete appearance
	(Optional custom color, refer to the User Manual)
Height Front (mm / in.)	400 / 15.74
Height Back (mm / in.)	400 / 15.74
Width Front (mm / in.)	250 / 10.62
Width Back (mm / in.)	78.5 / 03.09
Depth (mm / in.)	305 / 09.11
Weight (Kg / lb.)	8 / 17.63
Supported Processing	Armonia Pro Audio Suite & Armonia Plus



Co-linear Technology

Features

Multipurpose, double angled Full-Range system <<
 Co-linear LMF - MHF design concept <<
 High performance 70°H x 70°V Conical coverage <<
 Great axial 70° uniformity coverage pattern <<
 Greater bass extension and higher SPL capabilities <<
 IN/OUT Rear & Bottom sides NL4 SpeakON connectors <<
 Horizontal & Vertical brackets <<
 Optional Custom Color PCP (Polyurea Cabinet Protection) finish <<
 Protection Bag <<

Gamma Series

Gamma10

Two-way Full Range system



Gamma10 is an installation-specific product, moving a step forward in the lower frequency response, it can be considered a stand alone system. As each Gamma extended range speaker it features the Co-linear concept, housing a state of the art coaxial 10in. transducer.

The Co-linear design approach physically aligns LMF and HF acoustic centers to obtain a single point source configuration, delivering a coherent wavefront output across the entire reproducible frequencies spectrum, free of comb-filtering effects generated by traditional transducers couplings.

The result is an incomparable phase response, only recognizable in high quality studio reference monitors, bringing studio quality to short-medium throw professional sound reinforcement.

Its conical waveguide gives a dispersion of 70 deg. on both Vertical and Horizontal axis. The same HF directivity pattern makes all Gamma extended range speakers compatible each other, key factor extremely useful in every permanent or temporary installation. The optimized vented box offers an efficient lower response down to 55 Hz (@ -10 dB).

The Gamma10 double angled enclosure can be successfully employed as multipurpose system as well as: Stage monitor, PA or Front Fills and In/Out Fills, from small to medium-sized venue.

The really low profile makes the speaker extremely useful in all applications where not so high ceilings require small dimensions.

The system can be successfully supplemented with the Gamma Sub/Bass enclosures to further extend its lower response down to 30 Hz, always offering the Loud Professional legendary listening comfort.

A complete range of rigging accessories makes easier and faster all the deployments such as ceiling-mounted or stacked offering multiple set-up options and various orientations.

Significant construction criteria, combined with the latest technologies and innovative materials, ensure a great reliability over time.

Gamma10 cabinet is constructed from marine Birch-ply and has an impact and weather protected PCP (Polyurea Cabinet Protection) finish.

A color range (RAL Architectural program) makes all Gamma speakers, for an easy integration, most appropriate for each installation depending on the architectural and furniture requirements.

Applications

- >> Conference Halls
- >> Theaters
- >> Ceremonies
- >> Shops & Commercial Centers
- >> Small Clubs, Pubs, Lounge Bars & Restaurants

Gamma Series

Technical Specifications Gamma10

Frequency Range (+/-3dB)	65 Hz - 20 kHz (55 Hz @ -10 dB)
Nominal Directivity (-6dB) H x V	70° x 70° - Conical
Maximum SPL Peak (LMF - MHF)	129 dB
Components LMF	1 x 10in. Neodymium cone driver
Components MHF	1 x 1in. exit Neodymium compression driver
Nominal Impedance	8 Ω
Power Handling (AES / Peak)	300 / 1.200 W
Connections	2 x SpeakON™ NL4 - 1 x SpeakON™ NL4 Paralleled - Bottom side
Enclosure Construction	15 mm Birch-ply
Finish	Black or White Polyurea PCP (Polyurea Cabinet Protection) finish
Protection Grille	(Optional custom color, refer to the User Manual) Powder coated 1.5mm Metal Rigid Grille Acoustically Transparent Foam for discrete appearance (Optional custom color, refer to the User Manual)
Height Front (mm / in.)	550 / 21.65
Height Back (mm / in.)	550 / 21.65
Width Front (mm / in.)	330 / 12.99
Width Back (mm / in.)	145 / 05.70
Depth (mm / in.)	355 / 13.97
Weight (Kg / lb.)	14 / 30.86
Supported Processing	Armonia Pro Audio Suite & Armonia Plus



Co-linear Technology

Features

Multipurpose, double angled Full-Range system <<
 Co-linear LMF - MHF design concept <<
 High performance 70°H x 70°V Conical coverage <<
 Great axial 70° uniformity coverage pattern <<
 Greater bass extension and higher SPL capabilities <<
 IN/OUT Rear & Bottom sides NL4 SpeakON connectors <<
 Horizontal & Vertical brackets <<
 Optional Custom Color PCP (Polyurea Cabinet Protection) finish <<
 Protection Bag <<

Gamma Series

Gamma12

Two-way Full Range system



Gamma12 is an installation-specific product, moving a step forward in the lower frequency response, it can be considered a true stand alone system. As each Gamma extended range speaker it features the Co-linear concept, housing a state of the art coaxial 12in. transducer.

The Co-linear design approach physically aligns LMF and HF acoustic centers to obtain a single point source configuration, delivering a coherent wavefront output across the entire reproducible frequencies spectrum, free of comb-filtering effects generated by traditional transducers couplings.

The result is an incomparable phase response, only recognizable in high quality studio reference monitors, bringing studio quality to short-medium throw professional sound reinforcement.

Its conical waveguide gives a dispersion of 60 deg. on both Vertical and Horizontal axis, a little bit narrower compared to the smaller Gamma speaker.

The optimized vented box offers an efficient lower response down to 50 Hz (@ -10 dB).

The Gamma12 double angled enclosure can be successfully employed as multipurpose system as well as: Stage monitor, PA or Front Fills and In/Out Fills, from small to medium-sized venue.

The really low profile makes the speaker extremely useful in all applications where not so high ceilings require small dimensions.

The system can be successfully supplemented with the Gamma Sub/Bass enclosures to further extend its lower response down to 30 Hz, always offering the Loud Professional legendary listening comfort.

A complete range of rigging accessories makes easier and faster all the deployments such as ceiling-mounted or stacked offering multiple set-up options and various orientations.

Significant construction criteria, combined with the latest technologies and innovative materials, ensure a great reliability over time.

Gamma12 cabinet is constructed from marine Birch-ply and has an impact and weather protected PCP (Polyurea Cabinet Protection) finish.

A color range (RAL Architectural program) makes all Gamma speakers, for an easy integration, most appropriate for each installation depending on the architectural and furniture requirements.

Applications

- >> Conference Halls
- >> Theaters
- >> Ceremonies
- >> Clubs

Gamma Series

Technical Specifications Gamma12

Frequency Range (+/-3dB)	55 Hz - 20 kHz (50 Hz @ -10 dB)
Nominal Directivity (-6dB) H x V	60° x 60° - Conical
Maximum SPL Peak (LMF - MHF)	131 dB
Components LMF	1 x 12in. Neodymium cone driver
Components MHF	1 x 1.4in. exit Neodymium compression driver
Nominal Impedance	8 Ω
Power Handling (AES / Peak)	450 / 1.800 W
Connections	2 x SpeakON™ NL4 - 1 x SpeakON™ NL4 Paralleled - Bottom side
Enclosure Construction	15 mm Birch-ply
Finish	Black or White Polyurea PCP (Polyurea Cabinet Protection) finish (Optional custom color, refer to the User Manual)
Protection Grille	Powder coated 1.5mm Metal Rigid Grille Acoustically Transparent Foam for discrete appearance (Optional custom color, refer to the User Manual)
Height Front (mm / in.)	600 / 23.62
Height Back (mm / in.)	600 / 23.62
Width Front (mm / in.)	363 / 14.29
Width Back (mm / in.)	110 / 04.33
Depth (mm / in.)	410 / 16.14
Weight (Kg / lb.)	16 / 35.27
Supported Processing	Armonia Pro Audio Suite & Armonia Plus



Co-linear Technology

Features

Multipurpose, double angled Full-Range system <<
 Co-linear LMF - MHF design concept <<
 High performance 60°H x 60°V Conical coverage <<
 Great axial 60° uniformity coverage pattern <<
 Greater bass extension and higher SPL capabilities <<
 IN/OUT Rear & Bottom sides NL4 SpeakON connectors <<
 Horizontal & Vertical brackets <<
 Optional Custom Color PCP (Polyurea Cabinet Protection) finish <<
 Protection Bag <<

Gamma Series

Gamma15

Two-way Full Range system



Gamma15 is an installation-specific product, moving a step forward in the lower frequency response, it can be considered a true stand alone system. As each Gamma extended range speaker it features the Co-linear concept, housing a state of the art coaxial 15in. transducer.

The Co-linear design approach physically aligns LMF and HF acoustic centers to obtain a single point source configuration, delivering a coherent wavefront output across the entire reproducible frequencies spectrum, free of comb-filtering effects generated by traditional transducers couplings.

The result is an incomparable phase response, only recognizable in high quality studio reference monitors, bringing studio quality to short-medium throw professional sound reinforcement.

Its conical waveguide gives a dispersion of 60 deg. on both Vertical and Horizontal axis, a little bit narrower compared to the smaller Gamma speaker.

The optimized vented box offers an efficient lower response down to 45 Hz (@ -10 dB).

The Gamma15 double angled enclosure can be successfully employed as multipurpose system as well as: Stage monitor, PA or Front Fills and In/Out Fills, from small to medium-sized venue.

The really low profile makes the speaker extremely useful in all applications where not so high ceilings require small dimensions.

The system can be successfully supplemented with the Gamma Sub/Bass enclosures to further extend its lower response down to 30 Hz, always offering the Loud Professional legendary listening comfort.

A complete range of rigging accessories makes easier and faster all the deployments such as ceiling-mounted or stacked offering multiple set-up options and various orientations.

Significant construction criteria, combined with the latest technologies and innovative materials, ensure a great reliability over time.

Gamma15 cabinet is constructed from marine Birch-ply and has an impact and weather protected PCP (Polyurea Cabinet Protection) finish.

A color range (RAL Architectural program) makes all Gamma speakers, for an easy integration, most appropriate for each installation depending on the architectural and furniture requirements.

Applications

- >> Conference Halls
- >> Theaters
- >> Ceremonies
- >> Clubs

Gamma Series

Technical Specifications Gamma15

Frequency Range (+/-3dB)	50 Hz - 20 kHz (45 Hz @ -10 dB)
Nominal Directivity (-6dB) H x V	60° x 60° - Conical
Maximum SPL Peak (LMF - MHF)	131 dB
Components LMF	1 x 15in. Neodymium cone driver
Components MHF	1 x 1.4in. exit Neodymium compression driver
Nominal Impedance	8 Ω
Power Handling (AES / Peak)	450 / 1.800 W
Connections	2 x SpeakON™ NL4 - 1 x SpeakON™ NL4 Paralleled - Bottom side
Enclosure Construction	15 mm Birch-ply
Finish	Black or White Polyurea PCP (Polyurea Cabinet Protection) finish (Optional custom color, refer to the User Manual)
Protection Grille	Powder coated 1.5mm Metal Rigid Grille Acoustically Transparent Foam for discrete appearance (Optional custom color, refer to the User Manual)
Height Front (mm / in.)	700 / 27.55
Height Back (mm / in.)	700 / 27.55
Width Front (mm / in.)	450 / 17.71
Width Back (mm / in.)	131 / 05.17
Depth (mm / in.)	500 / 19.68
Weight (Kg / lb.)	18 / 39.68
Supported Processing	Armonia Pro Audio Suite & Armonia Plus



Co-linear Technology

Features

Multipurpose, double angled Full-Range system <<
 Co-linear LMF - MHF design concept <<
 High performance 60°H x 60°V Conical coverage <<
 Great axial 60° uniformity coverage pattern <<
 Greater bass extension and higher SPL capabilities <<
 IN/OUT Rear & Bottom sides NL4 SpeakON connectors <<
 Horizontal & Vertical brackets <<
 Optional Custom Color PCP (Polyurea Cabinet Protection) finish <<
 Protection Bag <<

Gamma Series

GammaS8

Dedicated Sub-Bass enclosure



GammaS8 is an installation specific product, housing a single 8in. long excursion transducer configured in a Band-pass enclosure design. The simple but efficient Band-pass design increases the Low frequency response extending its reproduction down to 45 Hz (40 Hz @ -10dB). It also allows a greater control over cone motion, reducing the total harmonic distortion, for an accurate and extremely controlled bass response not comparable with traditional direct radiating subwoofers. The bass-punch is unrivaled, facing systems equipped with the same transducer dimension. GammaS8 can be used stand alone, stacked or individually flown thanks to a dedicated bracket. A M20 built-in threaded insert adapter, on the top panel, allows all Gamma speakers to be pole mounted. Compact dimensions and light weight make easier and faster all deployments. This system is particularly suited for all small-to-medium sized venues, mostly when floor stacking configurations are not allowed and ceilings are not so high. GammaS8 is the ideal companion of the smaller Gamma Series extended range speakers (Gamma5, Gamma6), remarkably boosting their LF extension. Significant construction criteria, combined with the latest technologies and innovative materials, ensure a great reliability over time. GammaS8 cabinet is constructed from marine Birch-ply and has an impact and weather protected PCP (Polyurea Cabinet Protection) finish. A color range (RAL Architectural program) makes all Gamma speakers, for an easy integration, most appropriate for each installation depending on the architectural and furniture requirements.

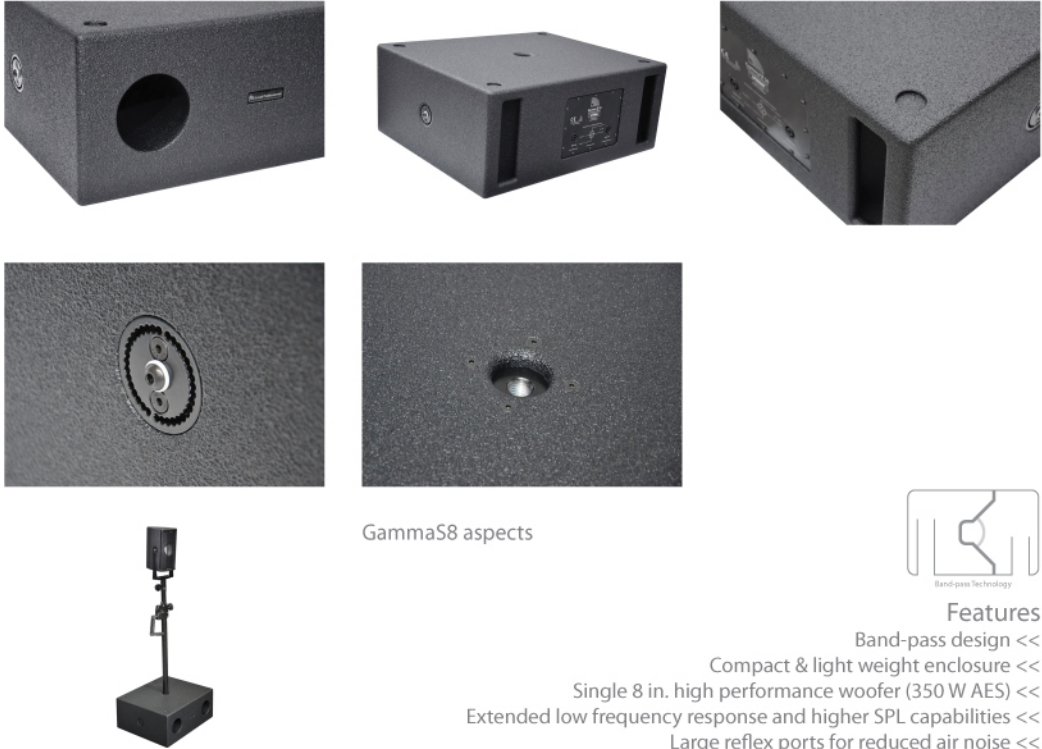
Applications

- >> Conference Halls
- >> Theaters
- >> Ceremonies
- >> Shops & Commercial Centers
- >> Small Clubs, Pubs, Lounge Bars & Restaurants

Gamma Series

Technical Specifications GammaS8

Frequency Range (+/-3dB)	45 Hz - 120 kHz (40 Hz @ -10 dB)
Nominal Directivity (-6dB) H x V	Omidirectional or Cardiod (paired)
Maximum SPL Peak LF	124 dB
Components LF	1 x 8in. Ferrite cone driver
Nominal Impedance LF	8 Ω
Power Handling (AES / Peak) LF	350 / 1.400 W
Connections	2 x SpeakON™ NL4 Connectors
Enclosure Construction	18 mm Birch-ply
Finish	Black or White Polyurea PCP (Polyurea Cabinet Protection) finish
Protection Grille	N.A.
Height Front (mm / in.)	250 / 09.84
Height Back (mm / in.)	250 / 09.84
Width Front (mm / in.)	600 / 23.62
Width Back (mm / in.)	600 / 23.62
Depth (mm / in.)	500 / 19.68
Weight (Kg / lb.)	20 / 44.09
Supported Processing	Armonia Pro Audio Suite & Armonia Plus



GammaS8 aspects



Features

- Band-pass design <<
- Compact & light weight enclosure <<
- Single 8 in. high performance woofer (350 W AES) <<
- Extended low frequency response and higher SPL capabilities <<
- Large reflex ports for reduced air noise <<
- Greater bass impact & unrivaled tonal accuracy <<
- Proprietary wall/ceiling bracket for suspension options <<
- Black or White PCP (Polyurea Cabinet Protection) finish <<
- Protection Bag <<

Gamma Series

Table of Contents	●
About Us	●
Formula Series	●
Formula Sub Series	●
VH e-motion Series	●
VH Full Range Series	●
VH Layer Series	●
VH Monitor Series	●
VH Subwoofer Series	●
VH Micro Series	●
Smart Series	●
Focus Series	●
MicrHome Series	●
Gamma Series	●
Nucleo Series	●
Quadra Series	●
AirStudio Series	●
PowerRack Series	●

Nucleo

Two-way Mini Full Range system



Nucleo is an installation specific product, it is quite literally the smaller and lighter Loud Professional Full Range system. The simple but efficient design houses a 4in. Low-Mid transducer and a 1in. soft dome tweeter.

Optimized to increase the LF system efficiency, Nucleo extends the response down to 120 Hz (110 @ -10 dB) despite of the small Low-Mid cone driver dimension.

The HF unit comprises a soft dome tweeter performing an incomparable flat and smooth frequency response up to 20 kHz.

The system can be successfully supplemented with the Nucleo Sub to further extend its lower response down to 50 Hz, always offering the Loud Professional legendary comfort listening.

A complete range of rigging accessories makes easier and faster all the deployments such as ceiling-mounted or stacked offering multiple set-up options and various orientations.

A short table stand allows the speaker to be installed next to a computer screen or a mixing console or on any flat support.

Nucleo can also be pole mounted on the NucleoS as a stand alone system using the proprietary pole mounting kit or it can be pole mounted with its specific floor stand.

Significant construction criteria, combined with the latest technologies and innovative materials, ensure a great reliability over time.

Nucleo cabinet is constructed from marine Birch-ply and has an impact and weather protected PCP (Polyurea Cabinet Protection) finish.

A color range (RAL Architectural program) makes Nucleo speakers, for an easy integration, most appropriate for each installation depending on the architectural and furniture requirements.

Applications

- >> Conference Halls
- >> Theaters
- >> Ceremonies
- >> Houses, Shops & Commercial Centers
- >> Small Clubs, Pubs, Lounge Bars & Restaurants

Nucleo Series

Technical Specifications Nucleo

Frequency Range (+/-3dB)	120 Hz - 20 kHz (100 Hz @ -10 dB)
Nominal Directivity (-6dB) H x V	120° x 120° - Conical
Maximum SPL Peak (LMF - MHF)	114 dB
Components LMF	1 x 4in. Nodymium cone driver
Components MHF	1 x 1in. Neodymium soft dome tweeter
Nominal Impedance	8 Ω (Internal passive network)
Power Handling (AES / Peak)	40 / 320 W
Connections	2 x SpeakON™ NL4
Enclosure Construction	9 / 12 mm Birch-ply
Finish	Black or White Polyurea PCP (Polyurea Cabinet Protection) finish
Protection Grille	Powder coated 1.5mm Metal Rigid Grille Acoustically Transparent Foam for discrete appearance
Height Front (mm / in.)	220 / 08.66
Height Back (mm / in.)	185 / 07.28
Width Front (mm / in.)	140 / 05.51
Width Back (mm / in.)	140 / 05.51
Depth (mm / in.)	150 / 05.90
Weight (Kg / lb.)	2 / 04.40
Supported Processing	Armonia Pro Audio Suite & Armonia Plus



Nucleo aspects

Features

- Mini Full Range system <<
- Portable & lightweight <<
- Out of standard SPL capabilities <<
- Optimezed bass response down to 120 Hz (110 Hz @ - 10 dB) <<
- High performance 120°H x 120°V coverage <<
- Pole mounting kit & Stand options <<
- Proprietary suspension brackets <<
- Black or White PCP (Polyurea Cabinet Protection) finish <<
- Flyghtcase (8 units) <<

Nucleo series

NucleoS

Dedicated Sub-Bass enclosure



NucleoS is the smallest Loud Professional Sub-Bass unit that provides an incredible Low frequency response despite of its small size. NucleoS is an installation specific product featuring a 8in. cone driver integrated to an ultra compact and lightweight enclosure. The Band-pass design produces significant performance benefits in terms of efficiency and deepest bass extension not comparable to traditional vented boxes of equal size. The system extends its Low frequency range down to 50 Hz (45 Hz @ -10 dB), giving an accurate bass response due to the reduced total harmonic distortion mostly characterized by the Band-pass simple but efficient speaker design. NucleoS is ideally suited for mobile and permanent or temporary installed specific applications. It is the ideal companion of the Nucleo speaker, significantly boosting its LF extension. A proprietary pole mounting kit makes easier and faster the integration with Nucleo as a stand alone system. It is particularly useful for all applications where high standard pressure levels are not required, as well as distributed sound in small venues: pubs, bars, shops and more others. Significant construction criteria, combined with the latest technologies and innovative materials, ensure a great reliability over time. NucleoS cabinet is constructed from marine Birch-ply and has an impact and weather protected PCP (Polyurea Cabinet Protection) finish. A color range (RAL Architectural program) makes Nucleo speakers, for an easy integration, most appropriate for each installation depending on the architectural and furniture requirements.

Applications

- >> Conference Halls
- >> Theaters
- >> Ceremonies
- >> Shops & Commercial Centers
- >> Small Clubs, Pubs, Lounge Bars & Restaurants

Nucleo Series

Technical Specifications NucleoS

Frequency Range (+/-3dB)	50 Hz - 120 kHz (45 Hz @ -10 dB)
Nominal Directivity (-6dB) H x V	Omidirectional or Cardiod (paired)
Maximum SPL Peak LF	121 dB
Components LF	1 x 8in. Ferrite cone driver
Nominal Impedance LF	8 Ω
Power Handling (AES / Peak) LF	350 / 1.400 W
Connections	2 x SpeakON™ NL4
Enclosure Construction	18 mm Birch-ply
Finish	Black or White Polyurea PCP (Polyurea Cabinet Protection) finish
Protection Grille	N.A.
Height Front (mm / in.)	250 / 09.84
Height Back (mm / in.)	250 / 09.84
Width Front (mm / in.)	490 / 19.29
Width Back (mm / in.)	490 / 19.29
Depth (mm / in.)	340 / 13.38
Weight (Kg / lb.)	12 / 26.45
Supported Processing	Armonia Pro Audio Suite & Armonia Plus



NucleoS aspects



Features

- Band-pass design <<
- Compact & light weight enclosure <<
- Single 8 in. high performance woofer (350 W AES) <<
- Extended low frequency response and higher SPL capabilities <<
- Large reflex port for reduced air noise <<
- Greater bass impact & unrivaled tonal accuracy <<
- Black or White PCP (Polyurea Cabinet Protection) finish <<
- Protection Bag <<

Nucleo series

Table of Contents	●
About Us	●
Formula Series	●
Formula Sub Series	●
VH e-motion Series	●
VH Full Range Series	●
VH Layer Series	●
VH Monitor Series	●
VH Subwoofer Series	●
VH Micro Series	●
Smart Series	●
Focus Series	●
MicrHome Series	●
Gamma Series	●
Nucleo Series	●
Quadra Series	●
AirStudio Series	●
PowerRack Series	●

Quadra2

Mini Full Range system



Quadra2, "*The Two*", extra-small sized, is the smallest speaker of the range. With all sides of 100 mm, it can be quite literally handled in your hands. Weighs no more than 0,5 Kg and it can fit wherever you need, even in the most unthinkable places.

Two, is the transducer dimension (2in.), it's the only one installed on-board and it's the smallest Loud Pro Full Range driver ever used before. Logically supported in the lower frequencies response, it is capable of delivering an extraordinary sound impact as you cannot expect from speakers of that size.

Designed to be easily integrated in all kind of installations where a distributed line is required, such as malls, shops, restaurants, lounge bars, it also shows itself extremely useful for residential uses and private ceremonies, physically blending in the architecture and disappearing from the sight, mostly thanks to its ultra-compact dimensions and to the customizable colors of the box and the front cloth.

A complete range of accessories makes it happen. Quadra2 can be wall/ceiling mounted using its own bracket fixable on both sides (Left/Right & Top/Bottom), due to the four M6 threaded inserts.

All Quadra Full Ranges can be installed on a microphone stand or on a standard speaker stand, this one using a dedicated bracket adapter. Both cases the speakers can be tilted.

A pole mounting kit allows the speaker to be installed on top of a Sub/Bass unit (QuadraS - HP, NucleoS, GammaS8), boosting its LF contour down to 45 Hz as a stand alone system.

It's reasonable to think this system usable for small-sized live performance venues, but only if properly configured.

The rear side features a single 4 pole Phoenix™ connector, extremely helpful for installed applications.

Significant construction criteria, combined with the latest technologies and innovative materials, ensure a great reliability over time.

Quadra2 cabinet is constructed from marine Birch-ply and has an impact and weather protected PCP (Polyurea Cabinet Protection) finish.

A color range (RAL Architectural program) makes all Quadra speakers, for an easy integration, most appropriate for each installation depending on the architectural and furniture requirements..

Applications

- >> Conference Halls
- >> Theaters
- >> Ceremonies
- >> Houses, Shops & Commercial Centers
- >> Small Clubs, Pubs, Lounge Bars & Restaurants

Quadra Series

Technical Specifications Quadra2

Frequency Range (+/-3dB)	170 Hz - 20 kHz (140 Hz @ -10 dB)
Nominal Directivity (-6dB) H x V	90° x 90° - Conical
Maximum SPL Peak (LMF - MHF)	104 dB
Components LMF - MHF	1 x 2in. Nodymium Full Range cone driver
Nominal Impedance	8 Ω
Power Handling (AES / Peak)	25 / 100 W
Connections	1 x Phoenix™ Connector
Enclosure Construction	9 / 12 mm Birch-ply
Finish	Black Polyurea PCP (Polyurea Cabinet Protection) finish (Optional custom color, Refer to the User Manual)
Protection Grille	Powder coated 1.5mm Metal Rigid Grille Acoustically Transparent Cloth for discrete appearance (Optional custom color, Refer to the User Manual)
Height Front (mm / in.)	100 / 03.93
Height Back (mm / in.)	100 / 03.93
Width Front (mm / in.)	100 / 03.93
Width Back (mm / in.)	100 / 03.93
Depth (mm / in.)	100 / 03.93
Weight (Kg / lb.)	0.5 / 01.10
Supported Processing	Armonia Pro Audio Suite & Armonia Plus



Quadra2 aspects

Features

- Mini Full Range system <<
- Portable & lightweight <<
- Out of standard SPL capabilities <<
- Optimezed bass response down to 170 Hz (140 Hz @ - 10 dB) <<
- High performace 90°H x 90°V coverage <<
- Pole mounting kit & Stand options <<
- Proprietary suspension brackets <<
- Optional Custom Color PCP (Polyurea Cabinet Protection) finish <<
- Flygtcase (8 units) <<

Quadra Series

Quadra4

Mini Full Range system



Quadra4, "*The Four*", extra small sized, is one of the smallest speaker of the range. With all sides of 130 mm, it can be quite literally handled in your hands. Weighs no more than 0,8 Kg and it can fit wherever you need, even in the most unthinkable places.

Four, is the transducer dimension (4in.), it's the only one installed on-board and it's one of the smallest Loud Pro Full Range driver ever used before.

Logically supported in the lower frequencies response, it is capable of delivering an extraordinary sound impact as you cannot expect from speakers of that size.

Designed to be easily integrated in all kind of installations where a distributed line is required, such as malls, shops, restaurants, lounge bars, it also shows itself extremely useful for residential uses and private ceremonies, physically blending in the architecture and disappearing from the sight, mostly thanks to its ultra-compact dimensions and to the customizable colors of the box and the front cloth.

A complete range of accessories makes it happen. Quadra4 can be wall/ceiling mounted using its own bracket fixable on both sides (Left/Right & Top/Bottom), due to the four M6 threaded inserts.

All Quadra Full Ranges can be installed on a microphone stand or on a standard speaker stand, this one using a dedicated bracket adapter. Both cases the speakers can be tilted.

A pole mounting kit allows the speaker to be installed on top of a Sub/Bass unit (QuadraS - HP, NucleoS, GammaS8), boosting its LF contour down to 45 Hz as a stand alone system.

It's reasonable to think this system usable for small-sized live performance venues, but only if properly configured.

The rear side features two 4 pole Phoenix™ connectors, extremely helpful for installed applications.

Significant construction criteria, combined with the latest technologies and innovative materials, ensure a great reliability over time.

Quadra4 cabinet is constructed from marine Birch-ply and has an impact and weather protected PCP (Polyurea Cabinet Protection) finish.

A color range (RAL Architectural program) makes all Quadra speakers, for an easy integration, most appropriate for each installation depending on the architectural and furniture requirements.

Applications

- >> Conference Halls
- >> Theaters
- >> Ceremonies
- >> Houses, Shops & Commercial Centers
- >> Small Clubs, Pubs, Lounge Bars & Restaurants

Quadra Series

Technical Specifications Quadra4

Frequency Range (+/-3dB)	130 Hz - 18 kHz (110 Hz @ -10 dB)
Nominal Directivity (-6dB) H x V	90° x 90° - Conical
Maximum SPL Peak (LMF - MHF)	114 dB
Components LMF - MHF	1 x 4in. Nodymium Full Range cone driver
Nominal Impedance	8 Ω
Power Handling (AES / Peak)	40 / 160 W
Connections	1 x Phoenix™
Enclosure Construction	9 / 12 mm Birch-ply
Finish	Black Polyurea PCP (Polyurea Cabinet Protection) finish
Protection Grille	(Optional custom color, Refer to the User Manual) Powder coated 1.5mm Metal Rigid Grille Acoustically Transparent Cloth for discrete appearance (Optional custom color, Refer to the User Manual)
Height Front (mm / in.)	130 / 05.11
Height Back (mm / in.)	130 / 05.11
Width Front (mm / in.)	130 / 05.11
Width Back (mm / in.)	130 / 05.11
Depth (mm / in.)	130 / 05.11
Weight (Kg / lb.)	0.8 / 01.70
Supported Processing	Armonia Pro Audio Suite & Armonia Plus



Quadra4 aspects

Features

- Mini Full Range system <<
- Portable & lightweight <<
- Out of standard SPL capabilities <<
- Optimezed bass response down to 130 Hz (110 Hz @ - 10 dB) <<
- High performace 90°H x 90°V coverage <<
- Pole mounting kit & Stand options <<
- Proprietary suspension brackets <<
- Optional Custom Color PCP (Polyurea Cabinet Protection) finish <<
- Flyghtcase (8 units) <<

Quadra Series

Quadra5

Mini Full Range system



Quadra5, "*The Five*", is the mid-sized speaker of the range. With all sides of 160 mm, it can be quite literally handled in your hands. Weighs no more than 2 Kg and it can fit wherever you need with ease.

Five, is the transducer dimension (5in.), featuring a coaxial Full Range driver, that provides an exceptional wide frequency response from 90 Hz up to 22 kHz.

The Neodymium tweeter (0.55in.), coaxially mounted on the same Mid-bass magnet structure, delivers a really smooth and flat response for a clear and precise Mid-Hi frequency reproduction.

Logically supported in the lower frequencies, Quadra5 is capable to perform an extraordinary sound impact as you cannot expect from speakers of that size.

Designed to be easily integrated in all kind of installations where a distributed line is required, such as malls, shops, restaurants, lounge bars, it also shows itself extremely useful for residential uses and private ceremonies, physically blending in the architecture and disappearing from the sight, mostly thanks to its ultra-compact dimensions and to the customizable colors of the box and the front cloth.

A complete range of accessories makes it happen. Quadra5 can be wall/ceiling mounted using its own bracket fixable on both sides (Left/Right & Top/Bottom), due to the four M6 threaded inserts.

All Quadra Full Ranges can be installed on a microphone stand or on a standard speaker stand, this one using a dedicated bracket adapter. Both cases the speakers can be tilted.

A pole mounting kit allows the speaker to be installed on top of a Sub/Bass unit (QuadraS - HP, NucleoS, GammaS8), boosting its LF contour down to 45 Hz as a stand alone system.

It's reasonable to think this system usable for small-sized live performance venues, but only if properly configured.

The rear side features two 4 pole Phoenix™ connectors, extremely helpful for installed applications.

Significant construction criteria, combined with the latest technologies and innovative materials, ensure a great reliability over time.

Quadra5 cabinet is constructed from marine Birch-ply and has an impact and weather protected PCP (Polyurea Cabinet Protection) finish.

A color range (RAL Architectural program) makes all Quadra speakers, for an easy integration, most appropriate for each installation depending on the architectural and furniture requirements.

Applications

- >> Conference Halls
- >> Theaters
- >> Ceremonies
- >> Houses, Shops & Commercial Centers
- >> Small Clubs, Pubs, Lounge Bars & Restaurants

Quadra Series

Technical Specifications

Quadra5

Frequency Range (+/-3dB)	110 Hz - 22 kHz (90 Hz @ -10 dB)
Nominal Directivity (-6dB) H x V	90° x 90° - Conical
Maximum SPL Peak (LMF - MHF)	115 dB
Components LMF	1 x 5in. Nodymium cone driver
Components MHF	1 x 0.55in. Neodymium Tweeter (Coaxial)
Nominal Impedance	8 Ω (Built - in passive network)
Power Handling (AES / Peak)	50 / 200 W
Connections	2 x Phoenix™ Connectors
Enclosure Construction	9 / 12 mm Birch-ply
Finish	Black Polyurea PCP (Polyurea Cabinet Protection) finish
Protection Grille	(Optional custom color, Refer to the User Manual)
	Powder coated 1.5mm Metal Rigid Grille
	Acoustically Ttransparent Cloth for discrete appearance
	(Optional custom color, Refer to the User Manual)
Height Front (mm / in.)	160 / 06.29
Height Back (mm / in.)	160 / 06.29
Width Front (mm / in.)	160 / 06.29
Width Back (mm / in.)	160 / 06.29
Depth (mm / in.)	175 / 06.88
Weight (Kg / lb.)	2 / 04.40



Quadra5 aspects

Features

- Mini Full Range system <<
- Portable & lightweight <<
- Out of standard SPL cababilities <<
- Optimezed bass response down to 110 Hz (90 Hz @ - 10 dB) <<
- High performace 90°H x 90°V coverage <<
- Pole mounting kit & Stand options <<
- Proprietary suspension brackets <<
- Optional Custom Color PCP (Polyurea Cabinet Protection) finish <<
- Flyghtcase (8 units) <<

Quadra Series

Quadra6

Mini Full Range system



Quadra6, "*The Six*", is the larger speaker of the range. About 220 mm large, weighs no more than 3.5 Kg.

Six, is the transducer dimension (6.5in.), featuring a coaxial Full Range driver tuned in a bass reflex vented box. The system provides a really wide frequency response from 75 Hz up to 22 kHz.

The Neodymium tweeter (0.55in.), coaxially mounted on the same Mid-bass magnet structure, delivers a really smooth and flat response for a clear and precise Mid-Hi frequency reproduction.

Logically supported in the lower frequencies, Quadra6 is capable to perform an extraordinary sound impact as you cannot expect from speakers of that size.

Designed to be easily integrated in all kind of installations where a distributed line is required, such as malls, shops, restaurants, lounge bars, it also shows itself extremely useful for residential uses and private ceremonies, physically blending in the architecture and disappearing from the sight, mostly thanks to its ultra-compact dimensions and to the customizable colors of the box and the front cloth.

A complete range of accessories makes it happen. Quadra6 can be wall/ceiling mounted using its own bracket fixable on both sides (Left/Right & Top/Bottom), due to the four M6 threaded inserts.

All Quadra Full Ranges can be installed on a microphone stand or on a standard speaker stand, this one using a dedicated bracket adapter. Both cases the speakers can be tilted.

A pole mounting kit allows the speaker to be installed on top of a Sub/Bass unit (QuadraS - HP, NucleoS, GammaS8), boosting its LF contour down to 45 Hz as a stand alone system.

The rear side features two 4 pole Phoenix™ connectors, extremely helpful for installed applications.

It's reasonable to think this system usable for small-sized live performance venues, but only if properly configured.

Significant construction criteria, combined with the latest technologies and innovative materials, ensure a great reliability over time.

Quadra6 cabinet is constructed from marine Birch-ply and has an impact and weather protected PCP (Polyurea Cabinet Protection) finish.

A color range (RAL Architectural program) makes all Quadra speakers, for an easy integration, most appropriate for each installation depending on the architectural and furniture requirements.

Applications

- >> Conference Halls
- >> Theaters
- >> Ceremonies
- >> Houses, Shops & Commercial Centers
- >> Small Clubs, Pubs, Lounge Bars & Restaurants

Quadra Series

Technical Specifications Quadra6

Frequency Range (+/-3dB)	90 Hz - 22 kHz (75 Hz @ -10 dB)
Nominal Directivity (-6dB) H x V	90° x 90° - Conical
Maximum SPL Peak (LMF - MHF)	115 dB
Components LMF	1 x 6.5in. Nodymium cone driver
Components MHF	1 x 0.55in. Neodymium Tweeter (coax. mounted)
Nominal Impedance	8 Ω (Built - in passive network)
Power Handling (AES / Peak)	50 / 200 W
Connections	2 x Phoenix™ Connectors
Enclosure Construction	9 / 12 mm Birch-ply
Finish	Black Polyurea PCP (Polyurea Cabinet Protection) finish
Protection Grille	(Optional custom color, Refer to the User Manual)
	Powder coated 1.5mm Metal Rigid Grille
	Acoustically Ttransparent Cloth for discrete appearance
	(Optional custom color, Refer to the User Manual)
Height Front (mm / in.)	220 / 08.66
Height Back (mm / in.)	220 / 08.66
Width Front (mm / in.)	220 / 08.66
Width Back (mm / in.)	220 / 08.66
Depth (mm / in.)	250 / 09.84
Weight (Kg / lb.)	3.5 / 07.71



Quadra6 aspects

Features

- Mini Full Range system <<
- Portable & lightweight <<
- Out of standard SPL cababilities <<
- Optimezed bass response down to 90 Hz (75 Hz @ - 10 dB) <<
- High performace 90°H x 90°V coverage <<
- Pole mounting kit & Stand options <<
- Proprietary suspension brackets <<
- Optional Custom Color PCP (Polyurea Cabinet Protection) finish <<
- Flyghtcase (8 units) <<

Quadra Series

QuadraS - HP

Dedicated Sub-Bass enclosure



QuadraS - HP is an installation specific product, housing a single 8in. long excursion transducer configured in a Band-pass enclosure design. The simple but efficient Band-pass design increases the Low frequency response extending its reproduction down to 45 Hz (40 Hz @ -10dB). It also allows a greater control over cone motion, reducing the total harmonic distortion (THD), for an accurate and extremely controlled bass response not comparable with traditional direct radiating subwoofers.

The bass-punch is unrivaled facing systems equipped with the same transducer dimension.

QuadraS - HP can be used stand alone, stacked or individually flown thanks to a dedicated bracket.

A M20 built-in threaded insert adapter, on the top panel, allows all Gamma speakers to be pole mounted.

Compact dimensions and light weight make easier and faster all deployments.

This system is particularly suited for all small-to-medium sized venues, mostly when floor stacking configurations are not allowed and ceilings are not so high.

QuadraS - HP is the ideal companion of all Quadra Series extended range speakers (Quadra2, Quadra4, Quadra5, Quadra6), remarkably boosting their LF extension.

Significant construction criteria, combined with the latest technologies and innovative materials, ensure a great reliability over time.

GammaS8 cabinet is constructed from marine Birch-ply and has an impact and weather protected PCP (Polyurea Cabinet Protection) finish.

A color range (RAL Architectural program) makes all Quadra speakers, for an easy integration, most appropriate for each installation depending on the architectural and furniture requirements.

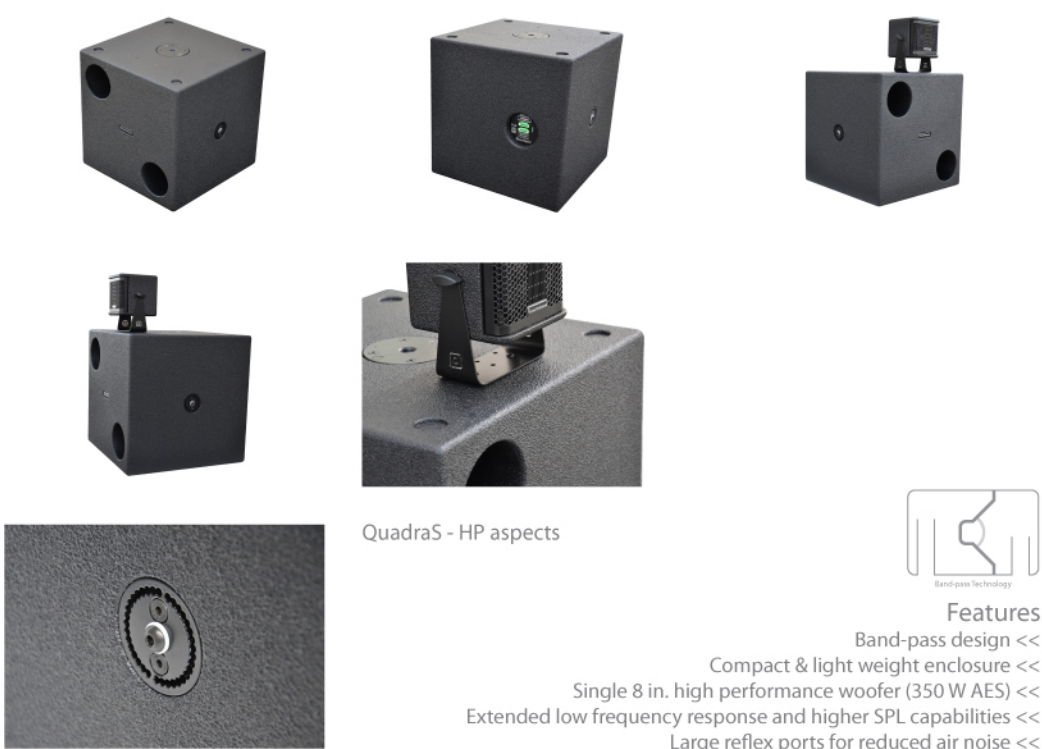
Applications

- >> Conference Halls
- >> Theaters
- >> Ceremonies
- >> Shops & Commercial Centers
- >> Small Clubs, Pubs, Lounge Bars & Restaurants

Quadra Series

Technical Specifications QuadraS - HP

Frequency Range (+/-3dB)	45 Hz - 110 kHz (40 Hz @ -10 dB)
Nominal Directivity (-6dB) H x V	Omidirectional or Cardiod (paired)
Maximum SPL Peak LF	124 dB
Components LF	1 x 8in. Ferrite cone driver
Nominal Impedance LF	8 Ω
Power Handling (AES / Peak) LF	350 / 1.400 W
Connections	2 x Phoenix™ 4 Pole Connectors
Enclosure Construction	18 mm Birch-ply
Finish	Black Polyurea PCP (Polyurea Cabinet Protection) finish (Optional custom color, Refer to the User Manual)
Protection Grille	N.A.
Height Front (mm / in.)	425 / 16.73
Height Back (mm / in.)	425 / 16.73
Width Front (mm / in.)	425 / 16.73
Width Back (mm / in.)	425 / 16.73
Depth (mm / in.)	425 / 16.73
Weight (Kg / lb.)	17.5 / 38.58
Supported Processing	Armonia Pro Audio Suite & Armonia Plus



QuadraS - HP aspects



Features

- Band-pass design <<
- Compact & light weight enclosure <<
- Single 8 in. high performance woofer (350 W AES) <<
- Extended low frequency response and higher SPL capabilities <<
- Large reflex ports for reduced air noise <<
- Greater bass impact & unrivaled tonal accuracy <<
- Proprietary wall/ceiling bracket for suspension options <<
- Black or White PCP (Polyurea Cabinet Protection) finish <<
- Protection Bag <<

Gamma Series

AirFive

Two-way True Reference Monitor



AirFive is a true reference loudspeaker monitor all designed and manufactured in Italy using state-of-the-art technologies and components. The result is unrivaled level of clarity, transparency and accuracy for a professional compact monitor of its range.

It makes the legendary Loud Pro performance and listening comfort available to every recording studio.

Astonishing resolution and neutrality is provided by a sophisticated dual power class D amplifier with an integrated on board DSP.

One hundred different customized presets can be stored on the user memories section. 10 Parametric EQ's, Butterworth, Bessel and Linkwitz-Riley High Pass / Low Pass crossover filters up to 24dB / oct., up to 2 s Input / Output Delays are some main features.

AirStudio is the Reference Monitor series, meanwhile the model number, AirFive, only refers to the approximate size (in inches) of the bass drivers.

Attention to details is evident throughout the design of the AirStudio series. The ribbon tweeter produces detailed, uncompressed highs and upper mids without being tired over long listening periods.

It combines a strong vertical directivity with a wider horizontal dispersion, ideal for rooms with reverberant ceilings and floors. Despite its compact housing, the bass response is powerful and extremely precise.

Loud Professional AirStudio Reference Monitor series provides an accurate sound reproduction with outstanding clarity, definition, and neutrality.

Every AirStudio monitor is engineered to deliver an uncompromisingly flat frequency response, from the elimination of internal diffractions and controlling the sound directivity courtesy of the ribbon tweeter technology.

The system extends its response from 50 Hz up to 32 kHz.

Its sturdy, vibration-free structure ensures diffraction-free sound reproduction even at highest output levels. Deep, accurate and tightly controlled bass response is delivered thanks to a double 5in. woofers and the low-frequency transmission line port.

To understand why, you only need to listen!.

Applications

>> Studio Recording

>> Editing

>> Mastering

>> Broadcast

AirStudio Series

Technical Specifications AirFive

Frequency Range (+/-3dB)	50 Hz - 32 kHz (45 Hz @ -6 dB)
Nominal Directivity (-6dB) H x V	70° x 30°
Maximum SPL Peak (LM - MHF)	121 / 117 dB
Components LMF	2 x 5in. Ferrite cone driver
Components MHF	1 x Neodymium ribbon tweeter (Diaphragm Area 6464 mmq)
Nominal Impedance LMF	4 Ω
Nominal Impedance MHF	6 Ω
Power Handling (AES / Peak) LMF	500 / 6000 W
Power Handling (AES / Peak) MHF	100 / 400 W
Amplifier	Dual channel Class D amplifier (2 x 500 @ 4 Ω - on board DSP)
Connections	2 x Neutrik™ XLR (In / Out) - 1 x ETH + 1 x USB Network 1 x VDE (AC Main In) - On / Off Switcher
Enclosure Construction	18 / 24 mm Birch-ply
Finish	Black Polyurea PCP (Polyurea Cabinet Protection) finish
Protection Grille	N.A.
Height Front (mm / in.)	575 / 22.63
Height Back (mm / in.)	585 / 23.03
Width Front (mm / in.)	585 / 23.03
Width Back (mm / in.)	735 / 28.93
Depth (mm / in.)	50 / 110.23
Weight (Kg / lb.)	15.5 / 34.17



AirFive aspects

Features

Advanced Transmission Line Technology <<
 Greater bass extension and higher SPL capabilities <<
 Unrivalled tonal accuracy <<
 Precision AMT driver designed and built for dynamics & neutrality <<
 Pronounced vertical directivity, wide horizontal dispersion <<
 Dedicated Class D with ultra low distortion amplifiers for each driver <<
 Powerful DSP engine controlling driver response, crossover & EQ <<
 Connectivity with balanced XLR IN/OUT, adjustable volume control <<
 Rear side Display, on board programmable presets <<
 Management software & Networking possibility <<

AirStudio series

Professional Touring Rack



A great amount of power can be delivered on demand from the 16 output amplifier channels (5.200 W Rms @ 2 Ω - 175 V peak). Two Ethernet network ports allow the remote control of the on board amplifiers by the Armonia Pro Audio management software. The system manages Analog & Digital (I/O) audio signals.

The Dante signals network is completely built-in via Cat5e (or higher) connection.

The PowerRack V.1 is fed with AES/EBU signals through 2 IN XLR3 connectors, each of them receiving 1 digital signal conveying 2 audio channels with link-out capability to other racks.

The **PowerPatch** unit combines all the 16 amplifier output channels in four main sections: "SPEAKER OUTPUT A,B,C & D"; each features a single Main NL8 and two slave NL4 SpeakON™ output connectors.

All-in-one for all touring applications, providing flexible solutions in every system configuration.

The Rack is equipped with a front and rear sliding door immediately having access to all input and output sections. Racks can be stacked on.



>> Touring

- >> Theatre

- >> Congress

- >> Club

PowerRack Series

Technical Specifications PoweRack V.1

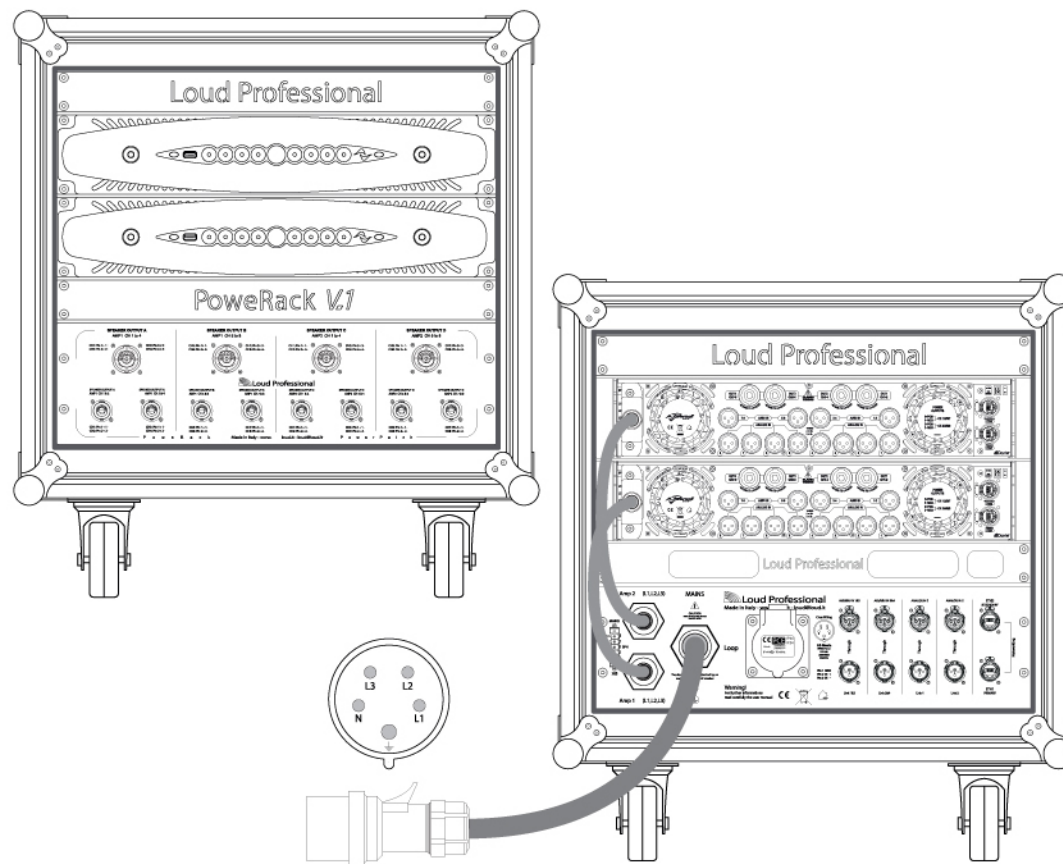
AC Mains & Signals Patch V.1

AC Mains Connections	1 x 32 A three phases IN plug & 1 x 32 A LINK OUT socket
Analog Signals	2 x Neutrik™ XLR Inputs, 2 x XLR Outputs
Digital Signals (V.1 / V.2)	2 x Neutrik™ XLR AES/EBU Inputs, 2 x Neutrik™ XLR AES/EBU Outputs
Network Connections	2 x Neutrik Ethercon I/O, Remote control

PowerPatch

Power Output Sections (A,B,C,D)	1 x SpeakON™ NL8 Main Speaker output connector
	2 x SpeakON™ NL4 Slave Speaker output connectors, referring to NL8 Main connector

Height Front (mm / in.)	735 / 28.93
Height Back (mm / in.)	735 / 28.93
Width Front (mm / in.)	645 / 25.39
Width Back (mm / in.)	645 / 25.39
Depth (mm / in.)	738 / 29.05
Weight (Kg / lb.)	80 / 176.37



PowerRack Series

PowerRack V.1i

Professional Installation Rack



PowerRack V.1i is a professional amplifier pack expressly designed for temporary and fixed installations. It comprises a sturdy vibrations free flightcase, two Powersoft™ X8 amplifiers, the AC Mains & Signals Patch and the PowePatch units.

A great amount of power can be delivered on demand from the 16 output amplifier channels (5.200 W Rms @ 2 Ω - 175 V peak). Two Ethernet network ports allow the remote control of the on board amplifiers by the Armonia Pro Audio management software.

The system manages Analog & Digital (I/O) audio signals.

The amplifiers feature (optional) a Dante card to send and receive audio on a Dante network. This type of connection utilises standard IP networks to transmit high-quality, uncompressed audio, with near-zero latency.

The Dante signals network is completely built-in via Cat5e (or higher) connection.

AC Mains & Signals Patch features a 32 A three-phase circuit: one IN plug and one LINK OUT outlet to power a secondary rack; The PowerRack V.1 is fed with AES/EBU signals through 2 IN XLR3 connectors, each of them receiving 1 digital signal conveying 2 audio channels with link-out capability to other racks. The patch also features 2 analog signals and 2 Ethercon I/O connectors.

The Ethernet connectors allow the remote control of the rack using Armonia management software system.

The **PowerPatch** unit combines all the 16 amplifier output channels in four main sections: "SPEAKER OUTPUT A,B,C & D"; each features a single Main NL8 and two slave NL4 SpeakON™ output connectors.

PowerPatch has been expressly designed to connect, process & bring power on demand to the Loud Professional speakers universe. All-in-one for all touring applications, providing flexible solutions in every system configuration.

A complete range of accessories and toolkits, such as different cable standards (SpeakON & LK) , NL4/NL8 Adapters, Split & Split Boxes, allow to always give the best wiring solution, easily getting the system ready to start. Racks can be stacked on or flown individually thanks to four M10 eyebolts.

The PowerRack series also comprises the V.2i version with only one X8 on board amplifier, always featuring all the necessary tools already above mentioned.



Applications

- >> Touring
- >> Theater
- >> Congress
- >> Club

PowerRack series

Technical Specifications PowerRack V.1i

AC Mains & Signals Patch V.1	
AC Mains Connections	1 x 32 A three phases IN plug & 1 x 32 A LINK OUT socket
Analog Signals	2 x Neutrik™ XLR Inputs, 2 x XLR Outputs
Digital Signals (V.1 / V.2)	2 x Neutrik™ XLR AES/EBU Inputs, 2 x Neutrik™ XLR AES/EBU Outputs
Network Connections	2 x Neutrik Ethercon I/O, Remote control
PowerPatch	
Power Output Sections (A,B,C,D)	1 x SpeakON™ NL8 Main Speaker output connector 2 x SpeakON™ NL4 Slave Speaker output connectors, referring to NL8 Main connector
Height Front (mm / in.)	575 / 22.63
Height Back (mm / in.)	575 / 22.63
Width Front (mm / in.)	585 / 23.03
Width Back (mm / in.)	585 / 23.03
Depth (mm / in.)	721 (820) / 28.34 (32.28 with Skate)
Weight (Kg / lb.)	98 (105) / 216 (231.5 with Skate)



PowerRack V.1i aspects

PowerRack series

● Table of Contents
● About Us
● Formula Series
● Formula Sub Series
● VH e-motion Series
● VH Full Range Series
● VH Layer Series
● VH Monitor Series
● VH Subwoofer Series
● VH Micro Series
● Smart Series
● Focus Series
● MicrHome Series
● Gamma Series
● Nucleo Series
● Quadra Series
● AirStudio Series
● PowerRack Series



Loud Professional
Coordinates

Via Sebino, 29
00199 Roma, Italy

Phone: +39 06 35.29.89.13
Fax: +39 06 35.29.89.13

Loud Studio Roma
Via di Santa Cornelia 5/A
00060 Formello - Roma, Italy

loudprofessional.com
crew@loudprofessional.com
marketing@loudprofessional.com

Welcome to Loud Professional

Copyright © 2012. Loud Professional is a registered trademark of Loud Pro S.r.l. All Rights Reserved.
Loud Professional reserves the right to alter specifications to the products and published documentations without notice